

TMEM119 RABBIT PAB

货号: S222420

产品全名: TMEM119 兔多抗

基因符号: OBIF

UNIPROT ID: Q4V9L6 (Gene Accession - NP_859075)

背景: Involved in positive regulation of bone mineralization; positive regulation of osteoblast differentiation; and positive regulation of osteoblast proliferation. Located in plasma membrane.

抗原: Synthetic peptide of human TMEM119

经过测试的应用: ELISA, IHC

推荐稀释比: IHC: 50-200; ELISA: 5000-10000

种属反应性: Rabbit

克隆性: Rabbit Polyclonal

亚型: Immunogen-specific rabbit IgG

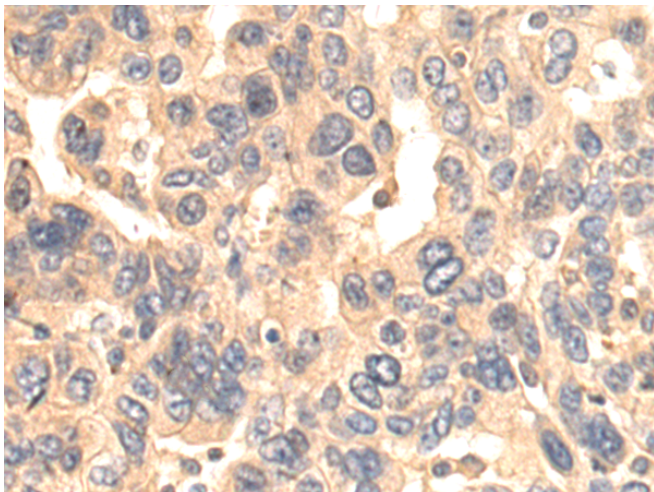
纯化: Antigen affinity purification

种属反应性: Human

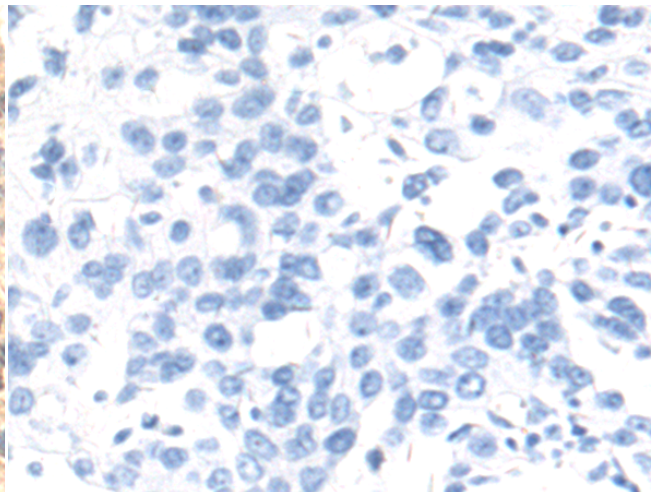
成分: PBS (without Mg²⁺ and Ca²⁺), pH 7.4, 150 mM NaCl, 0.05% Sodium Azide and 40% glycerol

研究领域: Neuroscience

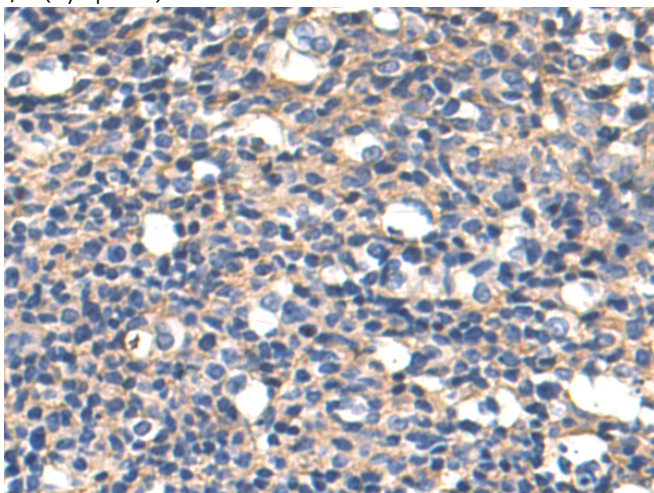
储存和运输: Store at -20°C. Avoid repeated freezing and thawing



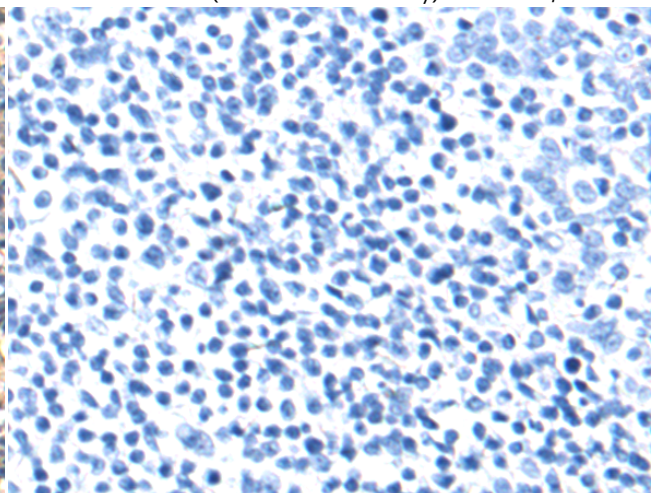
Immunohistochemistry analysis of paraffin embedded Human breast cancer tissue using 222420 (TMEM119 Antibody) at a dilution of 1/50 (Cytoplasm).



In comparison with the IHC on the left, the same paraffin-embedded Human breast cancer tissue is first treated with the synthetic peptide and then with 222420 (Anti-TMEM119 Antibody) at dilution 1/50.



The image on the left is immunohistochemistry of paraffin-embedded Human tonsil tissue using 222420 (Anti-TMEM119 Antibody) at a dilution of 1/50.



In comparison with the IHC on the left, the same paraffin-embedded Human tonsil tissue is first treated with synthetic peptide and then with D264582 (Anti-TMEM119 Antibody) at dilution 1/50.



Product Description

Pioneering GTPase and Oncogene Product Development since 2010
