

## TMA16 RABBIT PAB

货号: S218832

产品全名: TMA16 兔多抗

基因符号: C4orf43

**UNIPROT ID:** Q96EY4 (Gene Accession - BC011842)

背景: The function of this protein remains unknown.

抗原: Fusion protein of human TMA16

经过测试的应用: ELISA, IHC

推荐稀释比: IHC: 100-200; ELISA: 5000-10000

种属反应性: Rabbit

克隆性: Rabbit Polyclonal

亚型: Immunogen-specific rabbit IgG

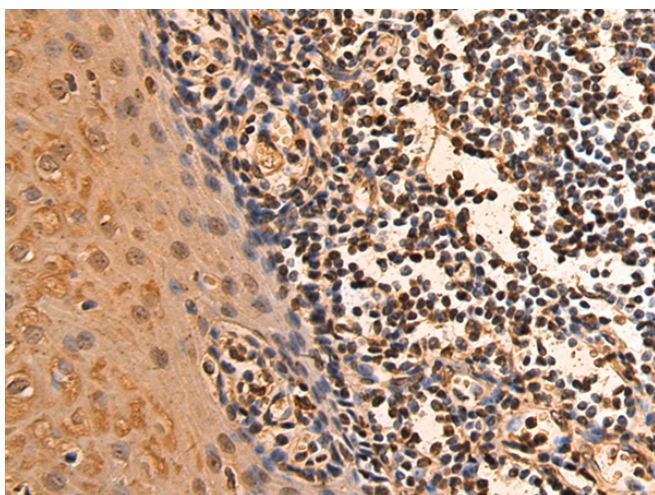
纯化: Antigen affinity purification

种属反应性: Human

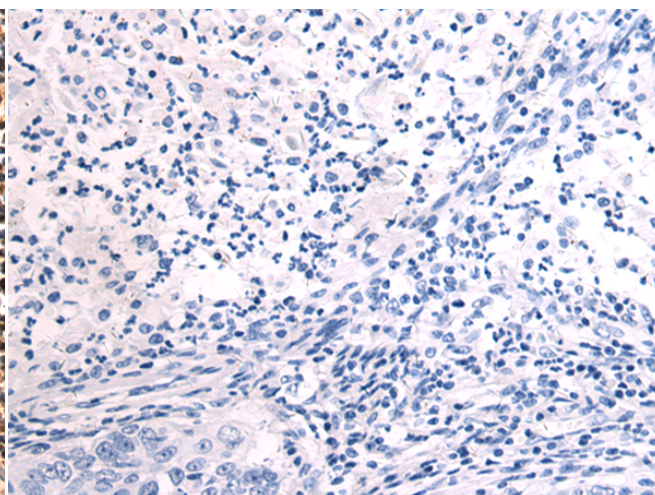
成分: PBS (without Mg<sup>2+</sup> and Ca<sup>2+</sup>), pH 7.4, 150 mM NaCl, 0.05% Sodium Azide and 40% glycerol

研究领域: Cell Biology

储存和运输: Store at -20°C. Avoid repeated freezing and thawing



Immunohistochemistry analysis of paraffin embedded Human esophagus cancer tissue using 218832(TMA16 Antibody) at a dilution of 1/105(Nucleus and Cytoplasm).



In comparison with the IHC on the left, the same paraffin-embedded Human esophagus cancer tissue is first treated with the fusion protein and then with 218832(Anti-TMA16 Antibody) at dilution 1/105.