

TM7SF2 RABBIT PAB

货号: S221029

产品全名: TM7SF2 兔多抗

基因符号: ANGI; NET47; DHCR14A

UNIPROT ID: O76062 (Gene Accession - NP_003264)

背景: Transmembrane 7 superfamily member 2 (TM7SF2, Sterol C14-reductase, 3beta-hydroxysterol Delta-reductase) is a 418 amino acid gene product that belongs to the ERG4/ERG24 family. TM7SF2 is a seven pass transmembrane protein that can localize to the membrane of the endoplasmic reticulum. TM7SF2 is involved in the conversion of lanosterol to cholesterol and, specifically, catalyzes the NADPH dependant reduction of 4,4-dimethyl-5-alpha-cholesta-8,14,24-trien-3-beta-ol to 4,4-dimethyl-5-alpha-cholesta-8,24-dien-3-beta-ol and NADP+.

抗原: Synthetic peptide of human TM7SF2

经过测试的应用: ELISA, WB, IHC

推荐稀释比: IHC: 25-100;WB: 500-2000;ELISA: 2000-5000

种属反应性: Rabbit

克隆性: Rabbit Polyclonal

亚型: Immunogen-specific rabbit IgG

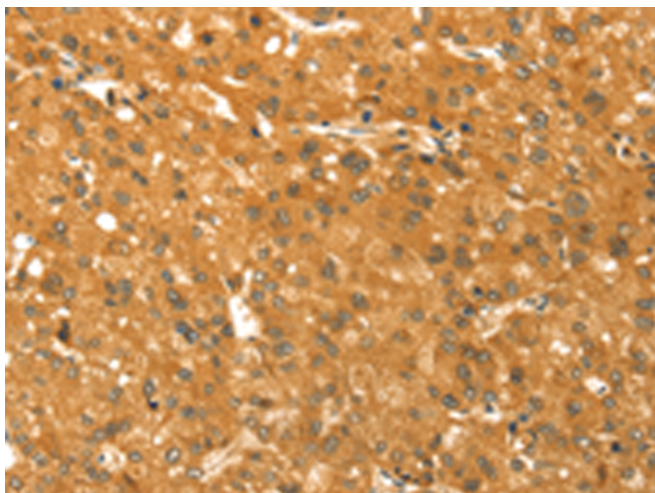
纯化: Antigen affinity purification

种属反应性: Human, Mouse

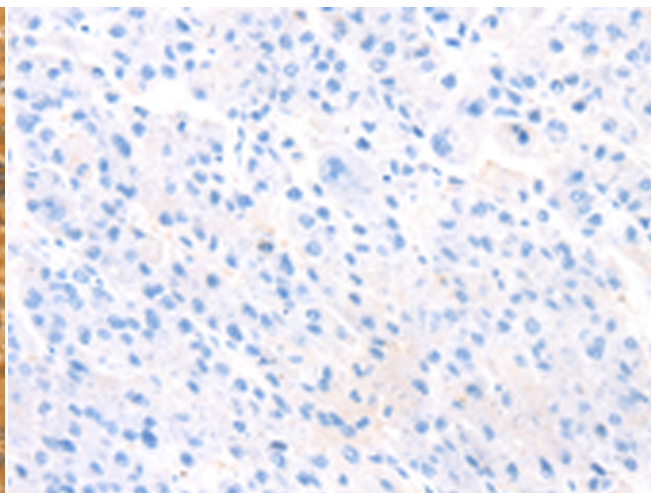
成分: PBS (without Mg²⁺ and Ca²⁺), pH 7.4, 150 mM NaCl, 0.05% Sodium Azide and 40% glycerol

研究领域: Metabolism

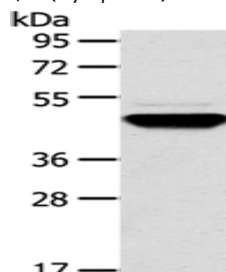
储存和运输: Store at -20°C. Avoid repeated freezing and thawing



Immunohistochemistry analysis of paraffin embedded Human liver cancer tissue using 221029(TM7SF2 Antibody) at a dilution of 1/30(Cytoplasm).



In comparison with the IHC on the left, the same paraffin-embedded Human liver cancer tissue is first treated with the synthetic peptide and then with 221029(Anti-TM7SF2 Antibody) at dilution 1/30.



Gel: 8%SDS-PAGE, Lysate: 40 µg;
Lane: Human fetal brain tissue;
Primary antibody: 221029(TM7SF2 Antibody) at dilution 1/500;
Secondary antibody: Goat anti rabbit IgG at 1/8000 dilution;
Exposure time: 1 minute