

TM4SF1 RABBIT PAB

货号: S220995

产品全名: TM4SF1 兔多抗

基因符号 L6; H-L6; M3S1; TAAL6

UNIPROT ID: P30408 (Gene Accession - NP_055035)

背景: The protein encoded by this gene is a member of the transmembrane 4 superfamily, also known as the tetraspanin family. Most of these members are cell-surface proteins that are characterized by the presence of four hydrophobic domains. The proteins mediate signal transduction events that play a role in the regulation of cell development, activation, growth and motility. This encoded protein is a cell surface antigen and is highly expressed in different carcinomas.

抗原: Synthetic peptide of human TM4SF1

经过测试的应用: ELISA, IHC

推荐稀释比: IHC: 25-100; ELISA: 2000-5000

种属反应性: Rabbit

克隆性: Rabbit Polyclonal

亚型: Immunogen-specific rabbit IgG

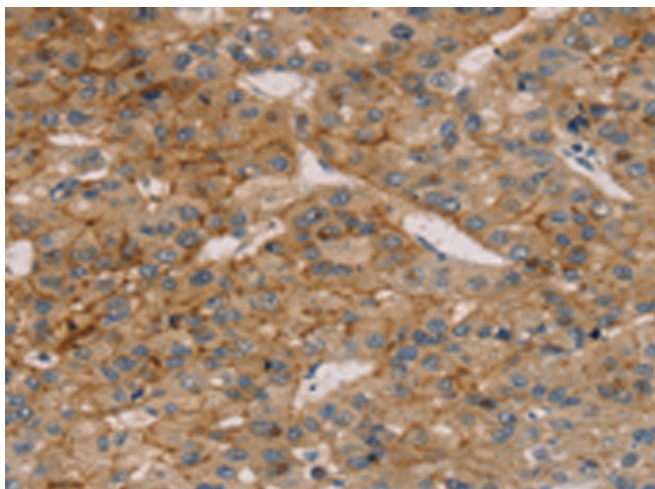
纯化: Antigen affinity purification

种属反应性: Human, Mouse

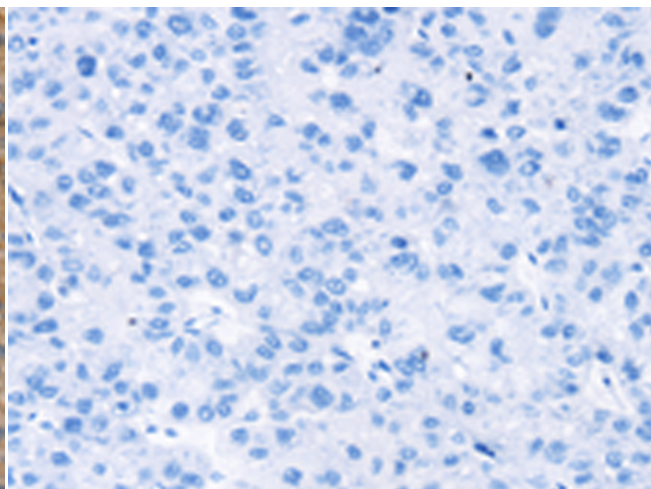
成分: PBS (without Mg²⁺ and Ca²⁺), pH 7.4, 150 mM NaCl, 0.05% Sodium Azide and 40% glycerol

研究领域: Cancer

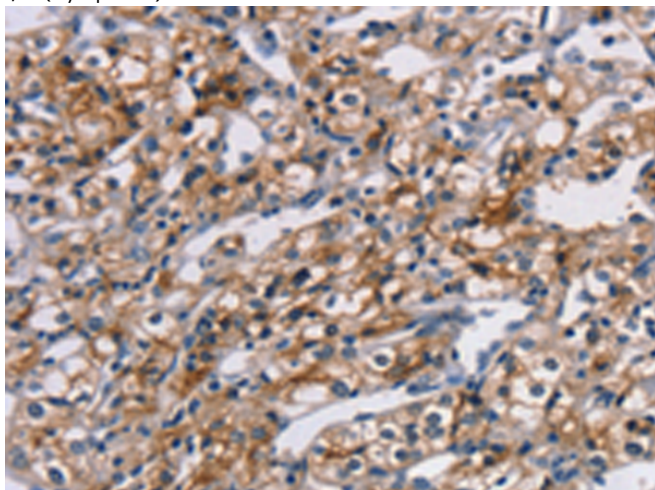
储存和运输: Store at -20°C. Avoid repeated freezing and thawing



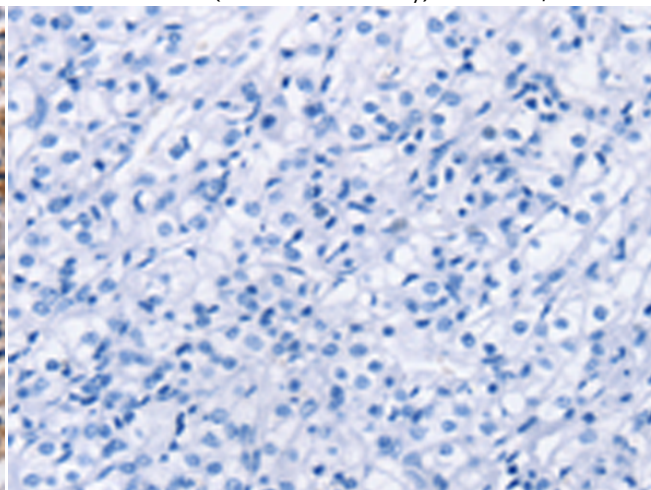
Immunohistochemistry analysis of paraffin embedded Human liver cancer tissue using 220995(TM4SF1 Antibody) at a dilution of 1/25(Cytoplasm).



In comparison with the IHC on the left, the same paraffin-embedded Human liver cancer tissue is first treated with the synthetic peptide and then with 220995(Anti-TM4SF1 Antibody) at dilution 1/25.



The image on the left is immunohistochemistry of paraffin-embedded Human prostate cancer tissue using 220995(Anti-TM4SF1 Antibody) at a dilution of 1/25.



In comparison with the IHC on the left, the same paraffin-embedded Human prostate cancer tissue is first treated with synthetic peptide and then with D262334(Anti-TM4SF1 Antibody) at dilution 1/25.



Product Description

Pioneering GTPase and Oncogene Product Development since 2010
