

TKT RABBIT PAB

货号: S217938

产品全名: TKT 兔多抗

基因符号 TK; TKT1; SDDHD; HEL107; HEL-S-48

UNIPROT ID: P29401 (Gene Accession - BC009970)

背景: This gene encodes a thiamine-dependent enzyme which plays a role in the channeling of excess sugar phosphates to glycolysis in the pentose phosphate pathway. Alternatively spliced transcript variants encoding multiple isoforms have been observed for this gene.

抗原: Fusion protein of human TKT

经过测试的应用: ELISA, IHC

推荐稀释比: IHC: 50-200; ELISA: 5000-10000

种属反应性: Rabbit

克隆性: Rabbit Polyclonal

亚型: Immunogen-specific rabbit IgG

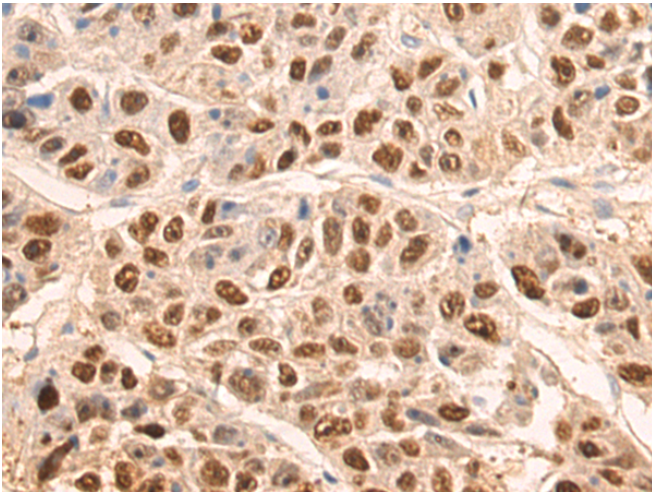
纯化: Antigen affinity purification

种属反应性: Human, Mouse, Rat

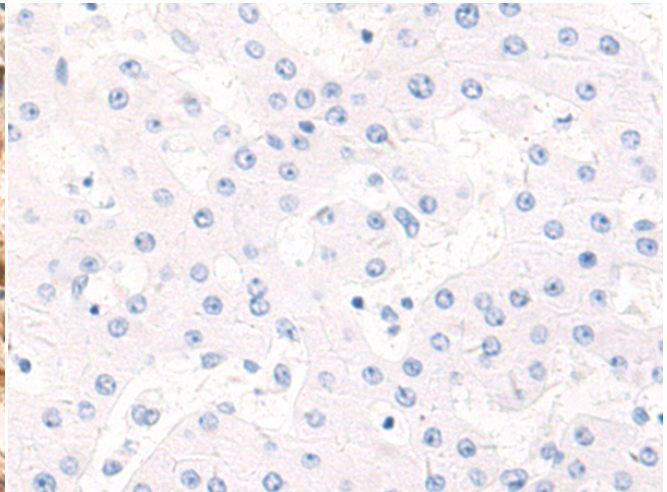
成分: PBS (without Mg²⁺ and Ca²⁺), pH 7.4, 150 mM NaCl, 0.05% Sodium Azide and 40% glycerol

研究领域: Metabolism, Cancer

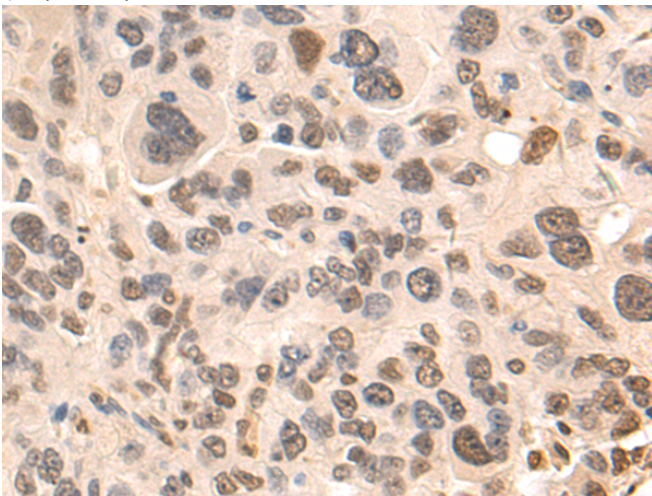
储存和运输: Store at -20°C. Avoid repeated freezing and thawing



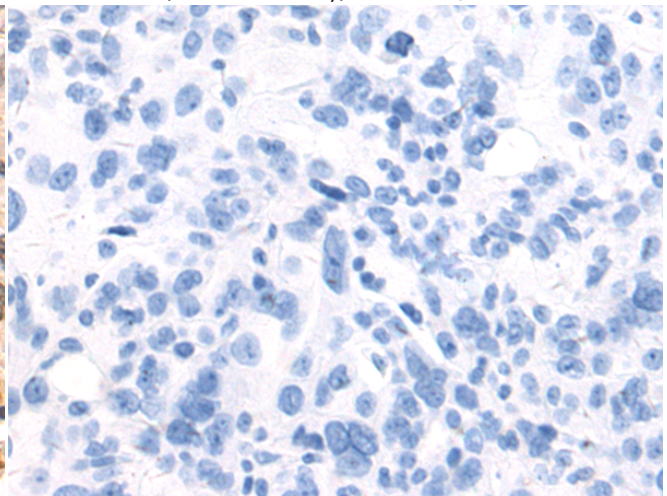
Immunohistochemistry analysis of paraffin embedded Human liver cancer tissue using 217938(TKT Antibody) at a dilution of 1/80(Nucleus).



In comparison with the IHC on the left, the same paraffin-embedded Human liver cancer tissue is first treated with the fusion protein and then with 217938(Anti-TKT Antibody) at dilution 1/80.



The image on the left is immunohistochemistry of paraffin-embedded Human breast cancer tissue using 217938(Anti-TKT Antibody) at a dilution of 1/80.



In comparison with the IHC on the left, the same paraffin-embedded Human breast cancer tissue is first treated with fusion protein and then with D223401(Anti-TKT Antibody) at dilution 1/80.



Product Description

Pioneering GTPase and Oncogene Product Development since 2010
