

TIMM44 RABBIT MAB

货号: N262997

产品全名: TIMM44 兔单克隆抗体

基因符号 TIM44

UNIPROT ID: O43615

背景: Essential component of the PAM complex, a complex required for the translocation of transit peptide-containing proteins from the inner membrane into the mitochondrial matrix in an ATP-dependent manner. Recruits mitochondrial HSP70 to drive protein translocation into the matrix using ATP as an energy source.

抗原: Recombinant protein of human TIMM44

经过测试的应用: WB, ICC/IF, IP

推荐稀释比: WB: 1/500-1/1000 IF: 1/50-1/200 IP: 1/20

种属反应性: Rabbit

克隆性: Rabbit Monoclonal

克隆编号: R04-7H8

分子量: Calculated MW: 51 kDa; Observed MW: 45 kDa

亚型: IgG

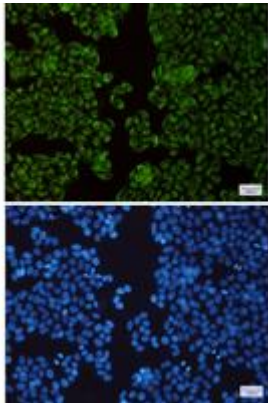
纯化: Affinity Purified

种属反应性: Human

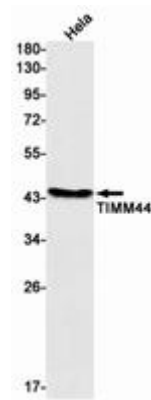
成分: PBS (without Mg²⁺ and Ca²⁺), pH 7.3 containing 50% glycerol, 0.5% BSA and 0.02% sodium azide

研究领域: Endocrine & Metabolism

储存和运输: Store at -20°C. Avoid repeated freezing and thawing



Immunocytochemistry analysis of TIMM44(green) in HeLa using TIMM44 antibody, and DAPI(blue)



Western blot analysis of TIMM44 in HeLa lysates using TIMM44 antibody.