

## TIMM10B RABBIT PAB

货号: S219413

产品全名: TIMM10B 兔多抗

基因符号: FXCI; Tim9b; TIM10B

**UNIPROT ID:** Q9Y5J6 (Gene Accession - BC011014)

**背景:** FXCI, or TIMM10B, belongs to a family of evolutionarily conserved proteins that are organized in heterooligomeric complexes in the mitochondrial intermembrane space. These proteins mediate the import and insertion of hydrophobic membrane proteins into the mitochondrial inner membrane.[supplied by OMIM, Apr 2004]

**抗原:** Fusion protein of human TIMM10B

**经过测试的应用:** ELISA, IHC

**推荐稀释比:** IHC: 100-200; ELISA: 5000-10000

**种属反应性:** Rabbit

**克隆性:** Rabbit Polyclonal

**亚型:** Immunogen-specific rabbit IgG

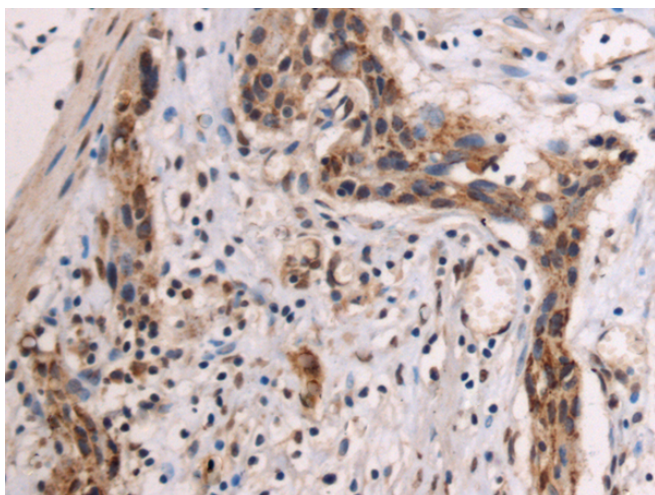
**纯化:** Antigen affinity purification

**种属反应性:** Human, Mouse, Rat

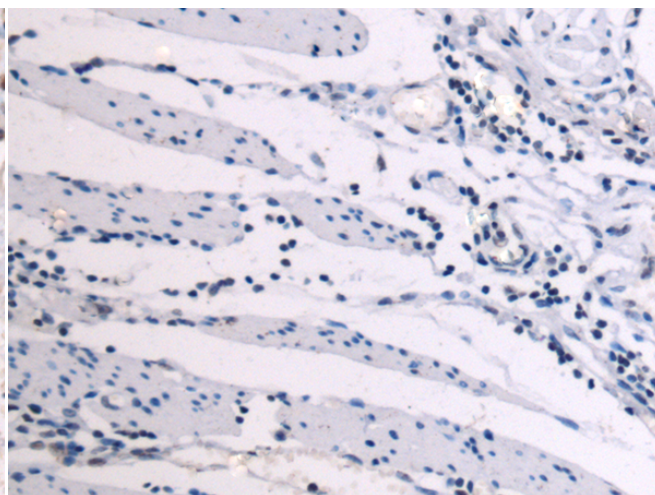
**成分:** PBS (without Mg<sup>2+</sup> and Ca<sup>2+</sup>), pH 7.4, 150 mM NaCl, 0.05% Sodium Azide and 40% glycerol

**研究领域:** Signal Transduction

**储存和运输:** Store at -20°C. Avoid repeated freezing and thawing



Immunohistochemistry analysis of paraffin embedded Human esophagus cancer tissue using 219413(TIMM10B Antibody) at a dilution of 1/125(Cytoplasm).



In comparison with the IHC on the left, the same paraffin-embedded Human esophagus cancer tissue is first treated with the fusion protein and then with 219413(Anti-TIMM10B Antibody) at dilution 1/125.