

THYROTROPIN SUBUNIT BETA RABBIT PAB

货号: N225986

产品全名: Thyrotropin Subunit beta 兔多抗

基因符号 CHNG4; TSHB

UNIPROT ID: P01222

背景: Various hormones are secreted from the anterior pituitary during development and growth. Thyroid Stimulating Hormone (TSH) is secreted from the anterior pituitary and controls thyroid structure and metabolism

抗原: A synthesized peptide derived from human TSH beta

经过测试的应用: WB,IHC-P

推荐稀释比: WB: 1/500-1/1000 IHC: 1/50-1/100

种属反应性: Rabbit

克隆性: Rabbit Polyclonal

分子量: Calculated MW: 16 kDa; Observed MW: 16 kDa

亚型: IgG

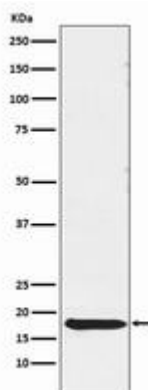
纯化: Affinity Chromatography

种属反应性: Human

成分: PBS (without Mg²⁺ and Ca²⁺), pH 7.3 containing 50% glycerol, 0.5% BSA and 0.02% sodium azide

研究领域: Neuroscience&Thyrotropin

储存和运输: Store at -20°C. Avoid repeated freezing and thawing



Western blot analysis of TSH beta in Human pituitary lysates using Thyrotropin Subunit beta antibody.