

THOC5 RABBIT PAB

货号: S216194

产品全名: THOC5 兔多抗

基因符号 Fmip; PK1.3; fSAP79; C22orf19

UNIPROT ID: Q13769 (Gene Accession - NP_003669)

背景: Predicted to enable mRNA binding activity. Involved in several processes, including monocyte differentiation; negative regulation of DNA damage checkpoint; and viral mRNA export from host cell nucleus. Located in nucleoplasm. Part of THO complex part of transcription export complex. Colocalizes with chromosome, telomeric region. Implicated in breast carcinoma.

抗原: Synthetic peptide of human THOC5

经过测试的应用: ELISA, IHC

推荐稀释比: IHC: 50-200; ELISA: 1000-2000

种属反应性: Rabbit

克隆性: Rabbit Polyclonal

亚型: Immunogen-specific rabbit IgG

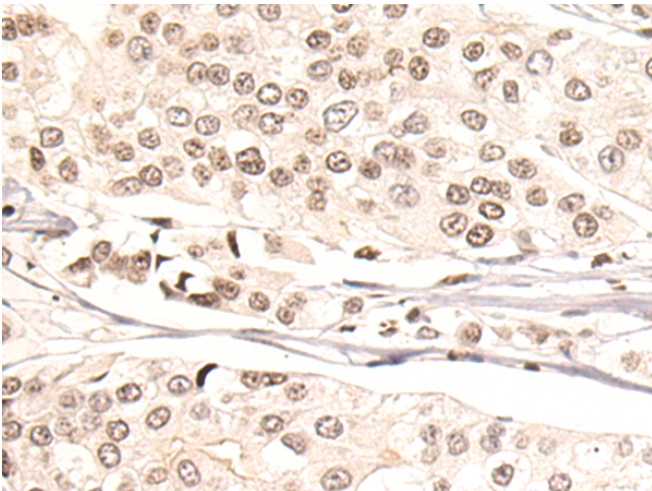
纯化: Antigen affinity purification

种属反应性: Human, Mouse, Rat

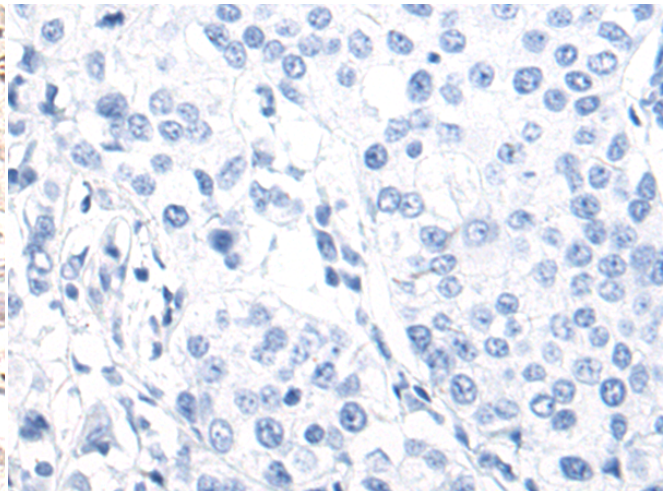
成分: PBS (without Mg²⁺ and Ca²⁺), pH 7.4, 150 mM NaCl, 0.05% Sodium Azide and 40% glycerol

研究领域: Immunology

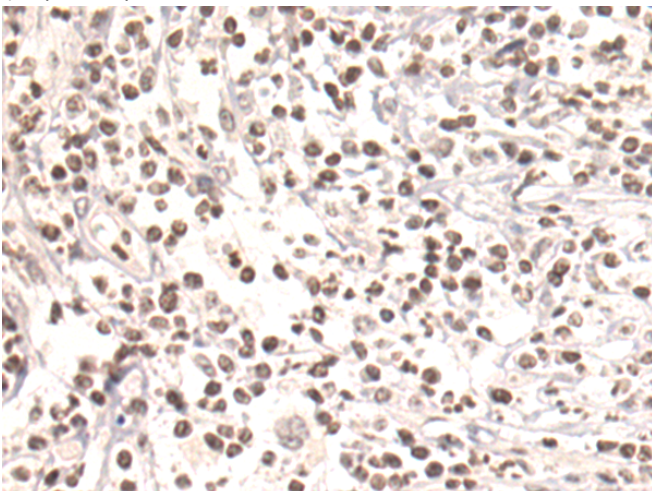
储存和运输: Store at -20°C. Avoid repeated freezing and thawing



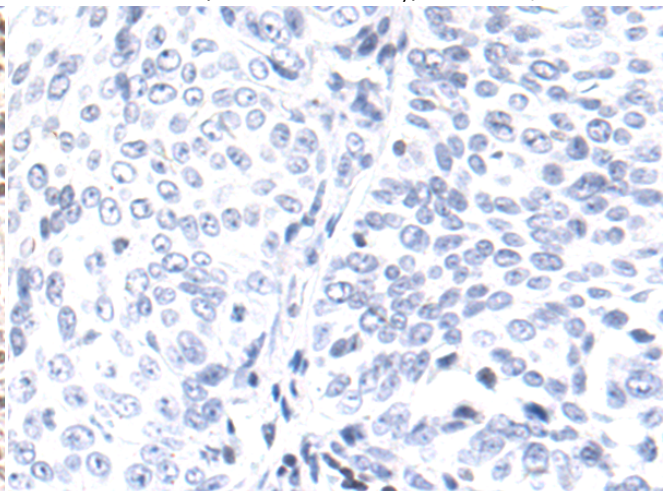
Immunohistochemistry analysis of paraffin embedded Human breast cancer tissue using 216194(THOC5 Antibody) at a dilution of 1/50(Nucleus).



In comparison with the IHC on the left, the same paraffin-embedded Human breast cancer tissue is first treated with the synthetic peptide and then with 216194(Anti-THOC5 Antibody) at dilution 1/50.



The image on the left is immunohistochemistry of paraffin-embedded Human bladder cancer tissue using 216194(Anti-THOC5 Antibody) at a dilution of 1/50.



In comparison with the IHC on the left, the same paraffin-embedded Human bladder cancer tissue is first treated with synthetic peptide and then with D164608(Anti-THOC5 Antibody) at dilution 1/50.



Product Description

Pioneering GTPase and Oncogene Product Development since 2010
