

## THIOREDOXIN RABBIT MAB

货号: N261628

产品全名: Thioredoxin 兔单克隆抗体

基因符号 TXN; ADF; ATL-derived factor; SASP; Thioredoxin; TRX1;  
Thioredoxin delta 3; TRX; TXN delta 3; TRDX

**UNIPROT ID:** P10599

**背景:** Thioredoxin (Trx) is a redox protein that is found in several species, such as bacteria, plants and mammals, and contains a conserved active site, consisting of Trp-Cys-Gly-Pro-Cys. Participates in many cellular processes including redox signaling, response to oxidative stress, and protein reduction

**抗原:** A synthetic peptide of human Thioredoxin/TRX

**经过测试的应用:** WB,IHC-F,IHC-P,ICC/IF,IP

**推荐稀释比:** WB: 1/1000-1/10000 IHC: 1/50-1/200 IF: 1/100-1/500 IP: 1/20

**种属反应性:** Rabbit

**克隆性:** Rabbit Monoclonal

**克隆编号:** R07-4H5

**分子量:** Calculated MW: 12 kDa; Observed MW: 12 kDa

**亚型:** IgG

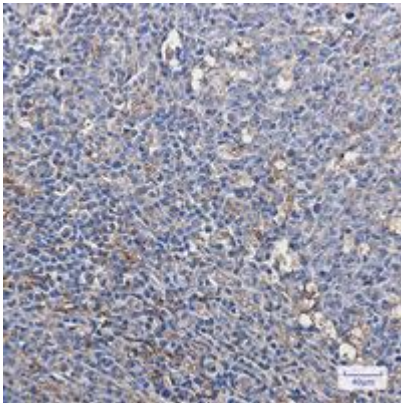
**纯化:** Affinity Purified

**种属反应性:** Human

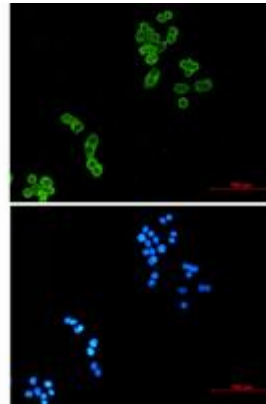
**成分:** PBS (without Mg<sup>2+</sup> and Ca<sup>2+</sup>), pH 7.3 containing 50% glycerol, 0.5% BSA and 0.02% sodium azide

**研究领域:** Tags & Cell Markers

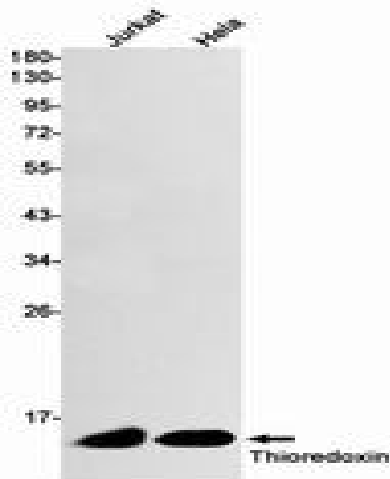
**储存和运输:** Store at -20°C. Avoid repeated freezing and thawing



Immunohistochemistry analysis of paraffin-embedded Human tonsil using Thioredoxin/TRX antibody. High-pressure and temperature Sodium Citrate pH 6.0 was used for antigen retrieval.



Immunocytochemistry analysis of Thioredoxin (green) in HeLa using Thioredoxin antibody, and DAPI (blue).



Western blot analysis of Thioredoxin in Jurkat, HeLa lysates using Thioredoxin antibody.