

THIOREDOXIN LIKE PROTEIN 1 RABBIT MAB

货号: N263040

产品全名: Thioredoxin Like Protein 1 兔单克隆抗体

基因符号 TxI; TXNL; TRP32; TXL-1; HEL-S-114

UNIPROT ID: O43396

背景: Active thioredoxin with a redox potential of about -250 mV.

抗原: A synthetic peptide of human TXNL1

经过测试的应用: WB,IHC-F,IHC-P,ICC/IF

推荐稀释比: WB: 1/500-1/1000 IHC: 1/50-1/100 IF: 1/50-1/200

种属反应性: Rabbit

克隆性: Rabbit Monoclonal

克隆编号: R06-8C2

分子量: Calculated MW: 32 kDa; Observed MW: 32 kDa

亚型: IgG

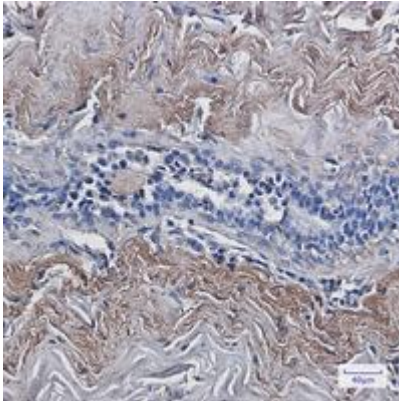
纯化: Affinity Purified

种属反应性: Human, Mouse and Rat

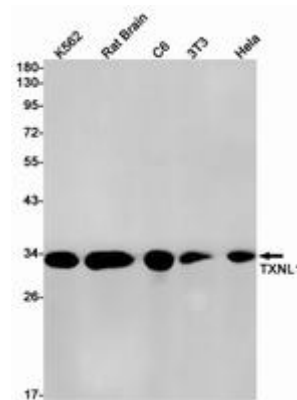
成分: PBS (without Mg²⁺ and Ca²⁺), pH 7.3 containing 50% glycerol, 0.5% BSA and 0.02% sodium azide

研究领域: Signal Transduction

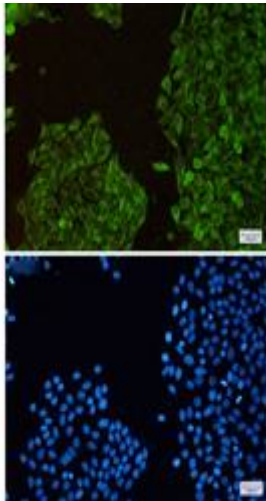
储存和运输: Store at -20°C. Avoid repeated freezing and thawing



Immunohistochemistry analysis of paraffin-embedded Human breast cancer using TXNL1 antibody. High-pressure and temperature Sodium Citrate pH 6.0 was used for antigen retrieval.



Western blot analysis of TXNL1 in K562, rat Brain, C6, 3T3, Hela lysates using Thioredoxin Like Protein 1 antibody.



Immunocytochemistry analysis of TXNL1 (green) in Hela using TXNL1 antibody, and DAPI (blue)