

THG1L RABBIT PAB

货号: S219306

产品全名: THG1L 兔多抗

基因符号 ICF45; IHG-1; hTHG1

UNIPROT ID: Q9NWX6 (Gene Accession – BC001523)

背景: The protein encoded by this gene is a mitochondrial protein that is induced by high levels of glucose and is associated with diabetic nephropathy. The encoded protein appears to increase mitochondrial biogenesis, which could lead to renal fibrosis. Another function of this protein is that of a guanylttransferase, adding GMP to the 5' end of tRNA(His). Several transcript variants encoding different isoforms have been found for this gene.

抗原: Fusion protein of human THG1L

经过测试的应用: ELISA, WB, IHC

推荐稀释比: IHC: 50–200;WB: 1000–5000;ELISA: 5000–10000

种属反应性: Rabbit

克隆性 : Rabbit Polyclonal

亚型: Immunogen-specific rabbit IgG

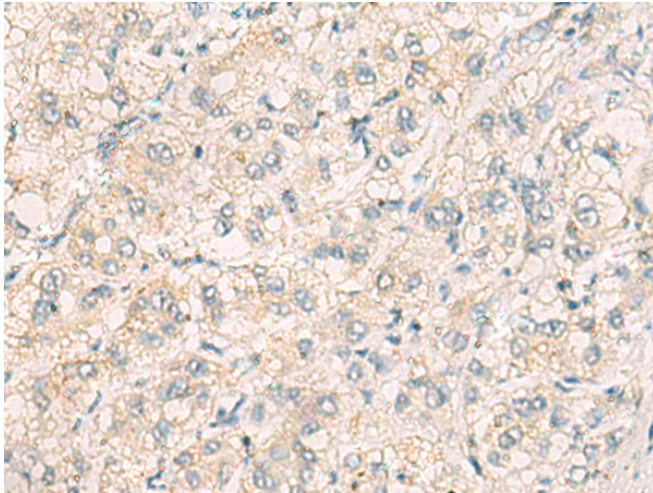
纯化: Antigen affinity purification

种属反应性: Human, Mouse, Rat

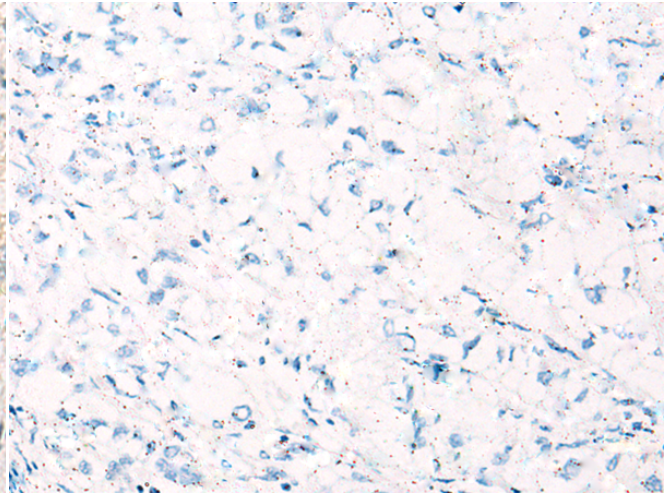
成分: PBS (without Mg²⁺ and Ca²⁺), pH 7.4, 150 mM NaCl, 0.05% Sodium Azide and 40% glycerol

研究领域: Cancer

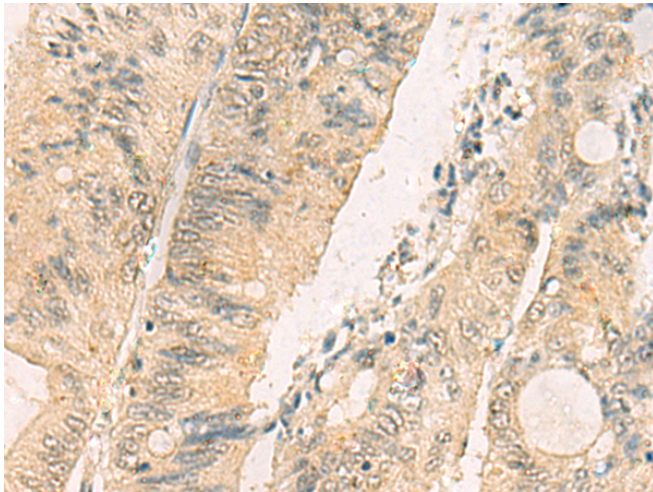
储存和运输: Store at –20°C. Avoid repeated freezing and thawing



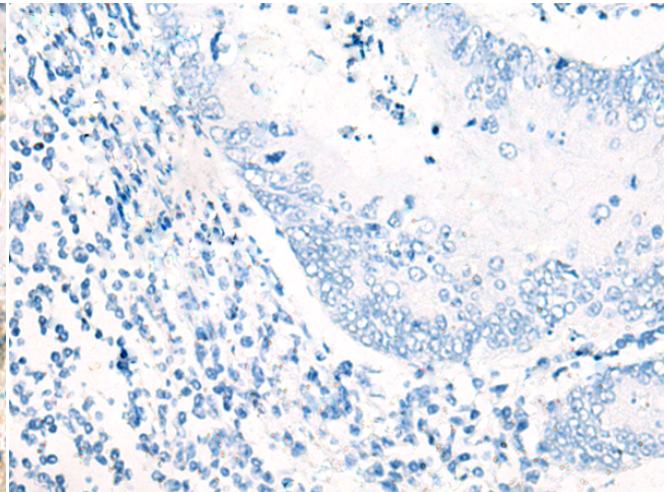
Immunohistochemistry analysis of paraffin embedded Human liver cancer tissue using 219306 (THGIL Antibody) at a dilution of 1/70 (Cytoplasm).



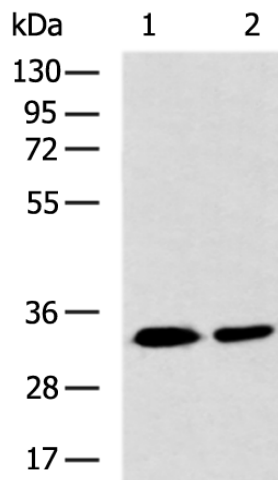
In comparison with the IHC on the left, the same paraffin-embedded Human liver cancer tissue is first treated with the fusion protein and then with 219306 (Anti-THGIL Antibody) at dilution 1/70.



The image on the left is immunohistochemistry of paraffin-embedded Human colorectal cancer tissue using 219306 (Anti-THGIL Antibody) at a dilution of 1/70.



In comparison with the IHC on the left, the same paraffin-embedded Human colorectal cancer tissue is first treated with fusion protein and then with D226260 (Anti-THGIL Antibody) at dilution 1/70.



Gel: 8%SDS-PAGE, Lysate: 40 µg;
Lane 1-2: HepG2 and RAMOS cell lysates;
Primary antibody: 219306 (THGIL Antibody) at dilution 1/800;
Secondary antibody: HRP-conjugated Goat anti rabbit IgG at 1/5000 dilution;
Exposure time: 1 minute

