

THEMIS2 RABBIT PAB

货号: S218110

产品全名: THEMIS2 兔多抗

基因符号 ICBI; ICB-1; Clorf38

UNIPROT ID: Q5TEJ8 (Gene Accession - BC132692)

背景: Predicted to be involved in T cell receptor signaling pathway and regulation of B cell activation. Predicted to be active in cytoplasm and nucleus.

抗原: Fusion protein of human THEMIS2

经过测试的应用: ELISA, IHC

推荐稀释比: IHC: 50-200; ELISA: 5000-10000

种属反应性: Rabbit

克隆性: Rabbit Polyclonal

亚型: Immunogen-specific rabbit IgG

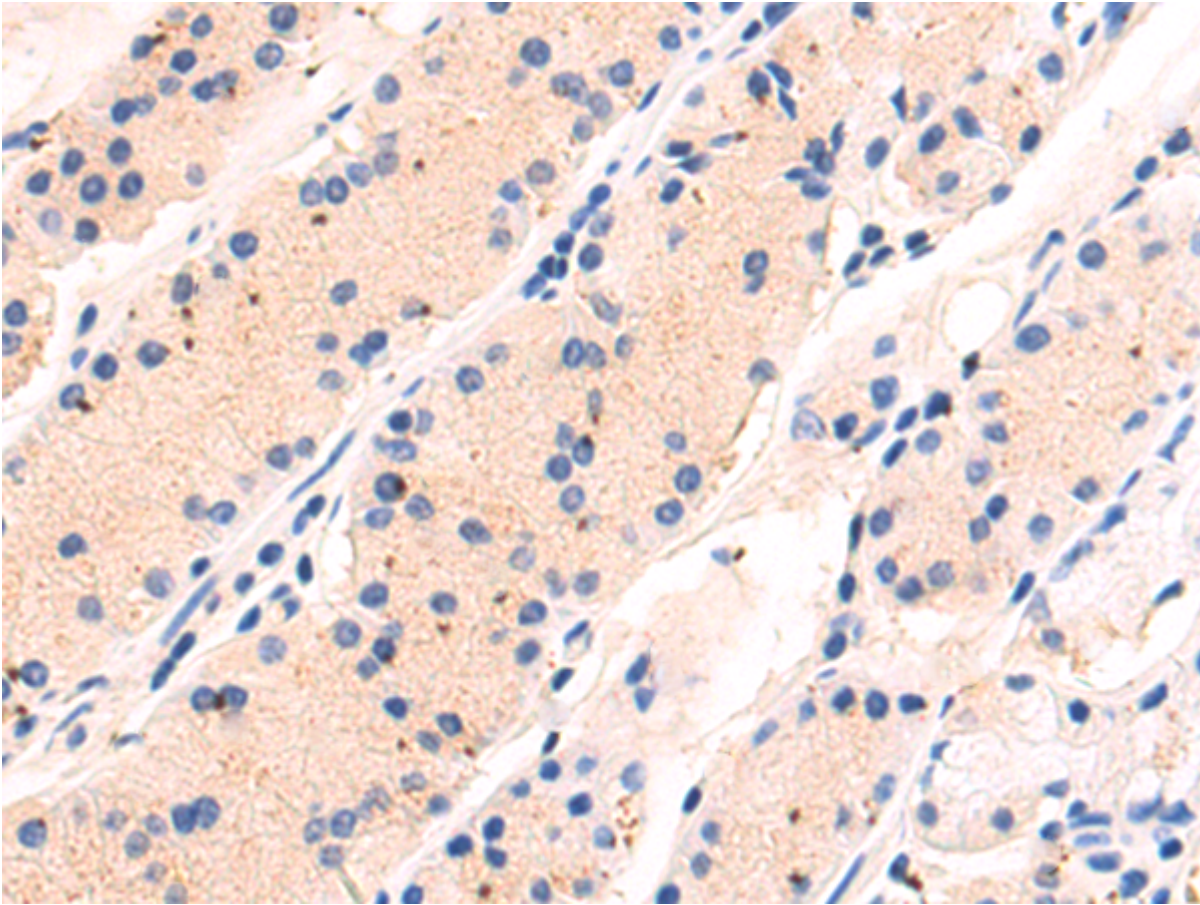
纯化: Antigen affinity purification

种属反应性: Human

成分: PBS (without Mg²⁺ and Ca²⁺), pH 7.4, 150 mM NaCl, 0.05% Sodium Azide and 40% glycerol

研究领域: Immunology

储存和运输: Store at -20°C. Avoid repeated freezing and thawing



Immunohistochemistry analysis of paraffin-embedded Human esophagus cancer tissue using 218110 (THEMIS2 Antibody) at a dilution of 1/80 (Cytoplasm).