

THAP4 RABBIT PAB

货号: S217894

产品全名: THAP4 兔多抗

基因符号 PP238; CGI-36

UNIPROT ID: Q8WY91 (Gene Accession - BC000247)

背景: 人 THAP4 是一个 577 残基蛋白，其功能未知，但被提议以序列特异性方式结合 DNA，类似于 THAP1，并已被发现对热休克反应上调。THAP4 在相对广泛的组织中以相对均匀的方式表达，并在淋巴瘤细胞中上调，并在心脏细胞中高度表达³。THAP4 的 C-末端域 (残基 415-577)， designated here as cTHAP4, is evolutionarily conserved and is observed in all known THAP4 orthologues. Several single domain proteins lacking a THAP domain are found in plants and bacteria, and show significant levels of homology to cTHAP4. It appears that cTHAP4 belongs to a large class of proteins that have yet to be fully functionally characterized.

抗原: Fusion protein of human THAP4

经过测试的应用: ELISA, IHC

推荐稀释比: IHC: 25-100; ELISA: 2000-5000

种属反应性: Rabbit

克隆性: Rabbit Polyclonal

亚型: Immunogen-specific rabbit IgG

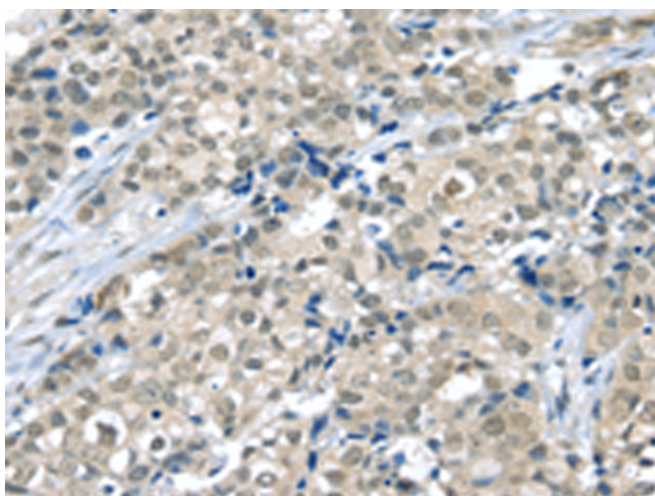
纯化: Antigen affinity purification

种属反应性: Human, Mouse, Rat

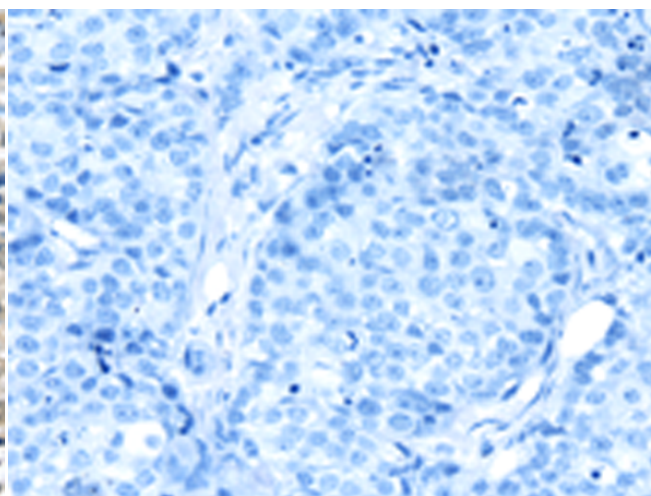
成分: PBS (without Mg²⁺ and Ca²⁺), pH 7.4, 150 mM NaCl, 0.05% Sodium Azide and 40% glycerol

研究领域: Epigenetics and Nuclear Signaling

储存和运输: Store at -20°C. Avoid repeated freezing and thawing



Immunohistochemistry analysis of paraffin embedded Human breast cancer tissue using 217894(THAP4 Antibody) at a dilution of 1/20(Nucleus and Cytoplasm).



In comparison with the IHC on the left, the same paraffin-embedded Human breast cancer tissue is first treated with the fusion protein and then with 217894(Anti-THAP4 Antibody) at dilution 1/20.