

THAP3 RABBIT PAB

货号: S221009

产品全名: THAP3 兔多抗

基因符号

UNIPROT ID: Q8WTV1 (Gene Accession - NP_001182682)

背景: THAP3 (THAP domain-containing protein 3) is a 239 amino acid protein that contains one THAP-type zinc finger and exists as three alternatively spliced isoforms. The gene that encodes THAP3 contains roughly 10,721 bases and maps to human chromosome 1p36.31. Spanning about 260 million base pairs and comprising nearly 8% of the human genome, chromosome 1 is the largest human chromosome.

抗原: Synthetic peptide of human THAP3

经过测试的应用: ELISA, WB, IHC

推荐稀释比: IHC: 25-100; WB: 500-2000; ELISA: 2000-5000

种属反应性: Rabbit

克隆性: Rabbit Polyclonal

亚型: Immunogen-specific rabbit IgG

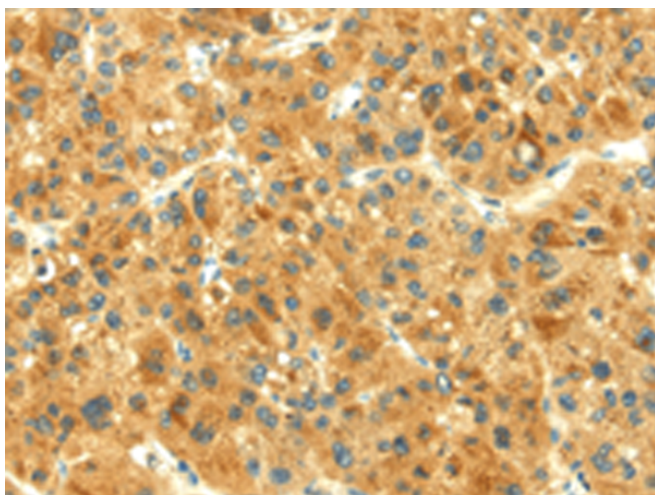
纯化: Antigen affinity purification

种属反应性: Human

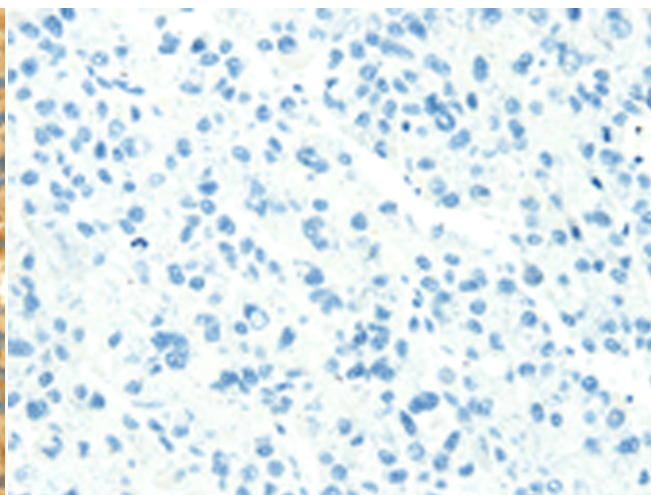
成分: PBS (without Mg²⁺ and Ca²⁺), pH 7.4, 150 mM NaCl, 0.05% Sodium Azide and 40% glycerol

研究领域: Epigenetics and Nuclear Signaling

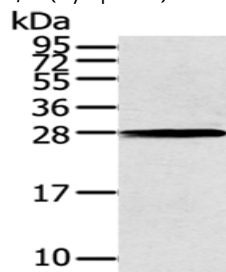
储存和运输: Store at -20°C. Avoid repeated freezing and thawing



Immunohistochemistry analysis of paraffin embedded Human liver cancer tissue using 221009(THAP3 Antibody) at a dilution of 1/30(Cytoplasm).



In comparison with the IHC on the left, the same paraffin-embedded Human liver cancer tissue is first treated with the synthetic peptide and then with 221009(Anti-THAP3 Antibody) at dilution 1/30.



Gel: 12%SDS-PAGE, Lysate: 40 µg;

Lane: 231 cells;

Primary antibody: 221009(THAP3 Antibody) at dilution 1/200;

Secondary antibody: Goat anti rabbit IgG at 1/8000 dilution;

Exposure time: 30 seconds