

TGM7 RABBIT PAB

货号: S214821

产品全名: TGM7 兔多抗

基因符号 TGMZ

UNIPROT ID: Q96PF1 (Gene Accession - NP_443187)

背景: Transglutaminases (TGM; EC 2.3.2.13) are a family of structurally and functionally related enzymes that stabilize protein assemblies through the formation of gamma-glutamyl-epsilon lysine crosslinks. For additional background information on transglutaminases, see TGM1 (MIM 190195).

抗原: Synthetic peptide of human TGM7

经过测试的应用: ELISA, IHC

推荐稀释比: IHC: 25-100; ELISA: 2000-5000

种属反应性: Rabbit

克隆性: Rabbit Polyclonal

亚型: Immunogen-specific rabbit IgG

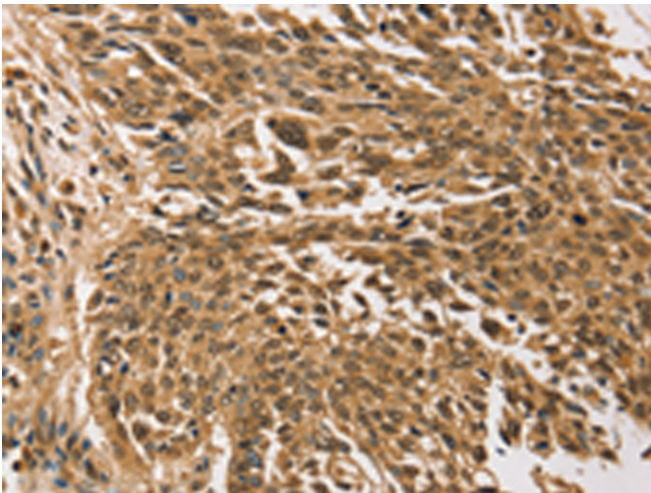
纯化: Antigen affinity purification

种属反应性: Human

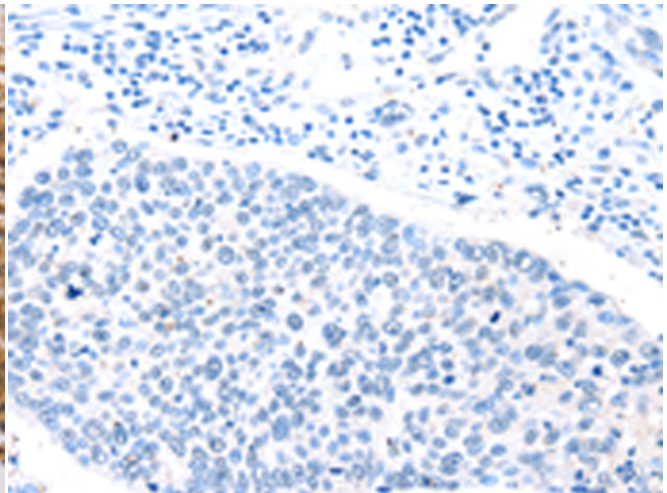
成分: PBS (without Mg²⁺ and Ca²⁺), pH 7.4, 150 mM NaCl, 0.05% Sodium Azide and 40% glycerol

研究领域: Metabolism, Signal Transduction

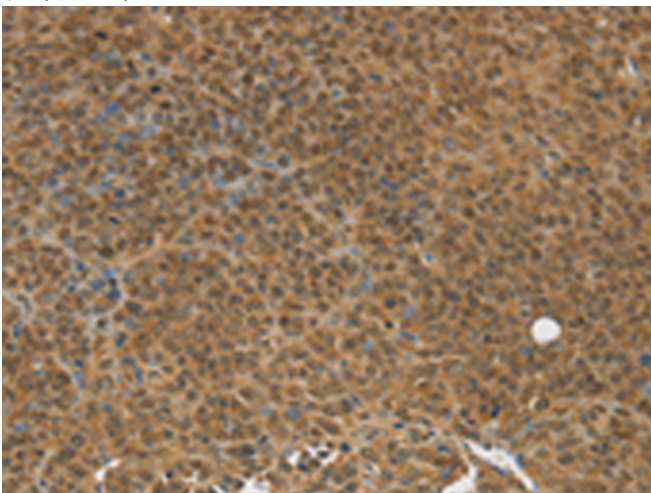
储存和运输: Store at -20°C. Avoid repeated freezing and thawing



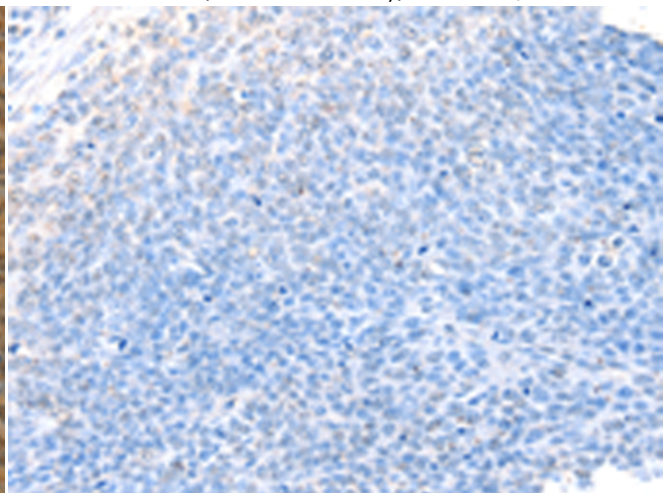
Immunohistochemistry analysis of paraffin embedded Human lung cancer tissue using 214821(TGM7 Antibody) at a dilution of 1/30(Nucleus).



In comparison with the IHC on the left, the same paraffin-embedded Human lung cancer tissue is first treated with the synthetic peptide and then with 214821(Anti-TGM7 Antibody) at dilution 1/30.



The image on the left is immunohistochemistry of paraffin-embedded Human ovarian cancer tissue using 214821(Anti-TGM7 Antibody) at a dilution of 1/30.



In comparison with the IHC on the left, the same paraffin-embedded Human ovarian cancer tissue is first treated with synthetic peptide and then with D162406(Anti-TGM7 Antibody) at dilution 1/30.



Product Description

Pioneering GTPase and Oncogene Product Development since 2010
