

TGIF2LX RABBIT PAB

货号: S216231

产品全名: TGIF2LX 兔多抗

基因符号 TGIFLX

UNIPROT ID: Q8IU1E1 (Gene Accession - BC117398)

背景: This gene encodes a member of the TALE/TGIF homeobox family of transcription factors. Testis-specific expression suggests that this gene may play a role in spermatogenesis. A homolog of this gene lies within the male specific region of chromosome Y, in a block of sequence that is thought to be the result of a large X-to-Y transposition.

抗原: Fusion protein of human TGIF2LX

经过测试的应用: ELISA, IHC

推荐稀释比: IHC: 25-100; ELISA: 500-5000

种属反应性: Rabbit

克隆性: Rabbit Polyclonal

亚型: Immunogen-specific rabbit IgG

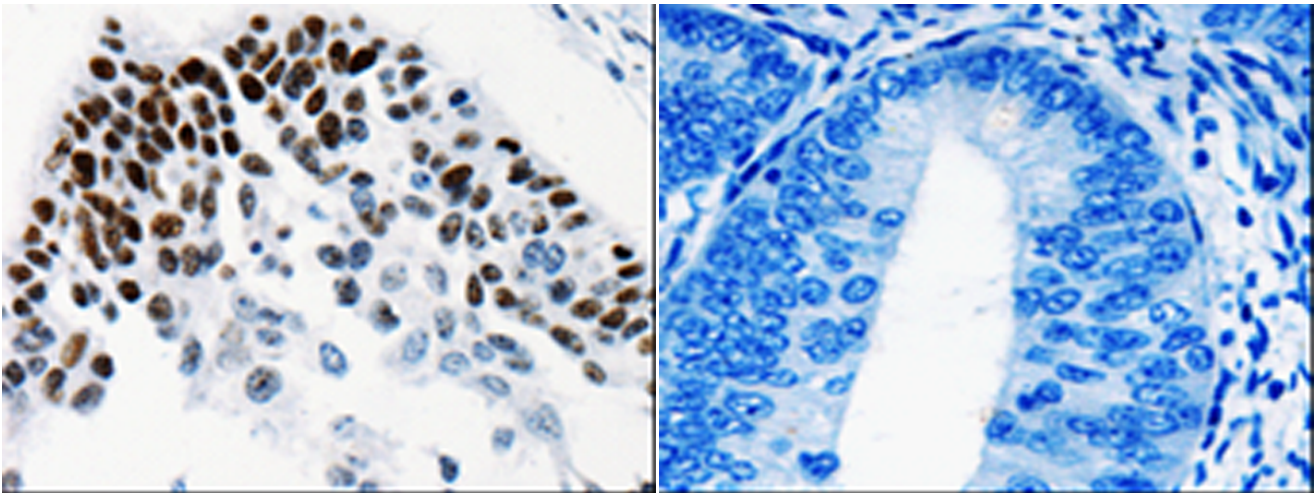
纯化: Antigen affinity purification

种属反应性: Human

成分: PBS (without Mg²⁺ and Ca²⁺), pH 7.4, 150 mM NaCl, 0.05% Sodium Azide and 40% glycerol

研究领域: Epigenetics and Nuclear Signaling

储存和运输: Store at -20°C. Avoid repeated freezing and thawing



Immunohistochemistry analysis of paraffin embedded Human cervical cancer tissue using 216231(TGIF2LX Antibody) at a dilution of 1/25(Nucleus).

In comparison with the IHC on the left, the same paraffin-embedded Human cervical cancer tissue is first treated with the fusion protein and then with 216231(Anti-TGIF2LX Antibody) at dilution 1/25.