

## TGFB1 RABBIT PAB

货号: S216831

产品全名: TGFB1 兔多抗

基因符号: CED; LAP; DPD1; TGFB; IBDIMDE; TGFbeta; TGF-beta1

**UNIPROT ID:** P01137 (Gene Accession - BC000125 )

**背景:** This gene encodes a secreted ligand of the TGF-beta (transforming growth factor-beta) superfamily of proteins. Ligands of this family bind various TGF-beta receptors leading to recruitment and activation of SMAD family transcription factors that regulate gene expression. The encoded preproprotein is proteolytically processed to generate a latency-associated peptide (LAP) and a mature peptide, and is found in either a latent form composed of a mature peptide homodimer, a LAP homodimer, and a latent TGF-beta binding protein, or in an active form consisting solely of the mature peptide homodimer. The mature peptide may also form heterodimers with other TGFB family members. This encoded protein regulates cell proliferation, differentiation and growth, and can modulate expression and activation of other growth factors including interferon gamma and tumor necrosis factor alpha. This gene is frequently upregulated in tumor cells, and mutations in this gene result in Camurati-Engelmann disease.

**抗原:** Fusion protein of human TGFB1

**经过测试的应用:** ELISA, WB, IHC

**推荐稀释比:** IHC: 150-300;WB: 500-2000;ELISA: 5000-10000

**种属反应性:** Rabbit

**克隆性:** Rabbit Polyclonal

**亚型:** Immunogen-specific rabbit IgG

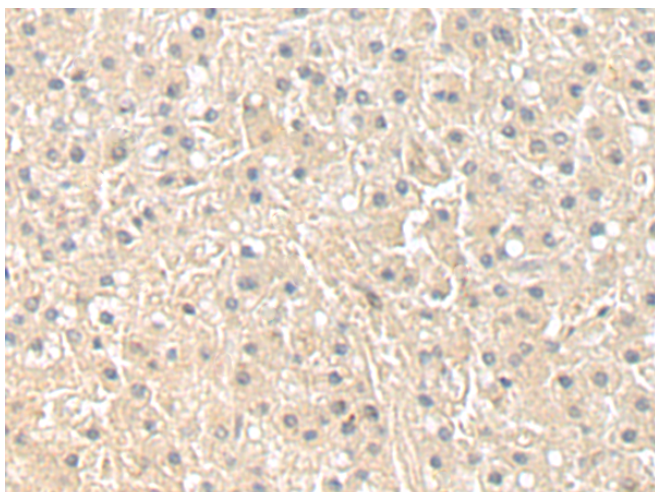
**纯化:** Antigen affinity purification

**种属反应性:** Human, Mouse, Rat

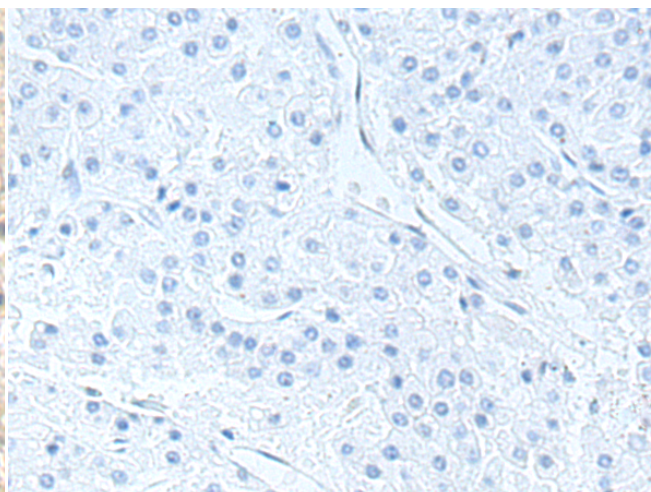
**成分:** PBS (without Mg<sup>2+</sup> and Ca<sup>2+</sup>), pH 7.4, 150 mM NaCl, 0.05% Sodium Azide and 40% glycerol

**研究领域:** Signal Transduction, Cardiovascular, Cancer, Metabolism

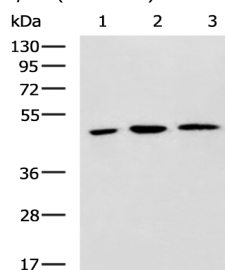
**储存和运输:** Store at -20°C. Avoid repeated freezing and thawing



Immunohistochemistry analysis of paraffin embedded Human liver cancer tissue using 216831(TGFB1 Antibody) at a dilution of 1/100(Secreted).



In comparison with the IHC on the left, the same paraffin-embedded Human liver cancer tissue is first treated with the fusion protein and then with 216831(Anti-TGFB1 Antibody) at dilution 1/100.



Gel: 8%SDS-PAGE, Lysate: 40 µg;

Lane 1-3: K562, NIH/3T3 and Hela cell lysates;

Primary antibody: 216831(TGFB1 Antibody) at dilution 1/550;

Secondary antibody: HRP-conjugated Goat anti rabbit IgG at 1/5000 dilution;

Exposure time: 1 minute



# Product Description

Pioneering GTPase and Oncogene Product Development since 2010

---