

TGF BETA 1 (8F6) MOUSE MAB

货号: N261339

产品全名: TGF beta 1 (8F6) 小鼠单抗

基因符号 TGF beta 1; TGFB; CED; LAP

UNIPROT ID: P01137

背景: Multifunctional protein that controls proliferation, differentiation and other functions in many cell types. Many cells synthesize TGFB1 and have specific receptors for it. It positively and negatively regulates many other growth factors. It plays an important role in bone remodeling as it is a potent stimulator of osteoblastic bone formation, causing chemotaxis, proliferation and differentiation in committed osteoblasts.

抗原: Synthetic peptide conjugated to KLH.

经过测试的应用: WB,IHC-P

推荐稀释比: WB: 1/500-1/1000 IHC: 1/50-1/100

种属反应性: Mouse

克隆性: Mouse Monoclonal

克隆编号: 8F6-3G10-4G9

分子量: Calculated MW: 44 kDa; Observed MW: 12,25,45-65 kDa

亚型: IgG1

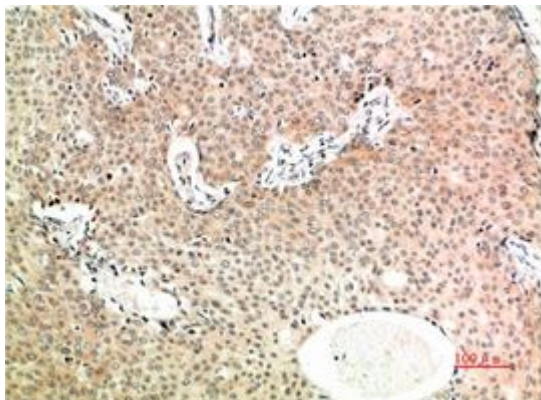
纯化: Affinity Purified

种属反应性: Human,Rat,Mouse

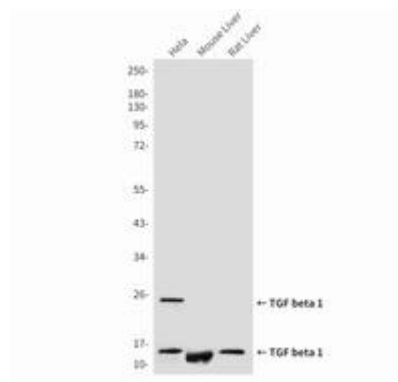
成分: PBS (without Mg²⁺ and Ca²⁺), pH 7.3 containing 50% glycerol, 0.5% BSA and 0.02% sodium azide

研究领域: Cardiovascular

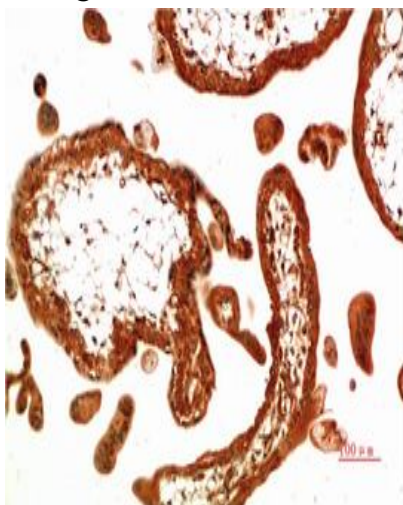
储存和运输: Store at -20°C. Avoid repeated freezing and thawing



Immunohistochemistry analysis of paraffin-embedded Human Breast Carcinoma Tissue using TGF beta 1 (8F6) antibody. High-pressure and temperature Sodium Citrate pH 6.0 was used for antigen retrieval.



Western blot analysis of TGF beta 1 (8F6) in Hela lysates, mouse Liver lysates, rat Liver lysates using TGF beta 1 antibody.



Immunohistochemistry analysis of paraffin-embedded Human Placental Tissue using TGF beta 1 (8F6) antibody. High-pressure and temperature Sodium Citrate pH 6.0 was used for antigen retrieval.