

## TESC RABBIT PAB

货号: S211913

产品全名: TESC 兔多抗

基因符号 TSC; CHP3

**UNIPROT ID:** Q96BS2 (Gene Accession - BC015221)

**背景:** Tescalcin, also known as TESC, TSC or CHP3, is a 267 amino acid protein that contains one EF-hand domain and is expressed abundantly in adult heart tissue. Using calcium as a cofactor, Tescalcin interacts with NHE-1 and functions to couple the activation of the ERK cascade with the expression of Ets proteins during megakaryocytic differentiation. Human Tescalcin shares 97% sequence identity with its mouse counterpart, suggesting a conserved role between species. Multiple isoforms of Tescalcin exist due to alternative splicing events. Functions as an integral cofactor in cell pH regulation by controlling plasma membrane-type Na<sup>+</sup>/H<sup>+</sup> exchange activity. Promotes the maturation, transport, cell surface stability and exchange activity of SLC9A1/NHE1 at the plasma membrane. Promotes the induction of hematopoietic stem cell differentiation toward megakaryocytic lineage. Essential for the coupling of ERK cascade activation with the expression of ETS family genes in megakaryocytic differentiation. Also involved in granulocytic differentiation in a ERK-dependent manner. Inhibits the phosphatase activity of calcineurin.

**抗原:** Fusion protein of human TESC

**经过测试的应用:** ELISA, IHC

**推荐稀释比:** IHC: 25-100; ELISA: 5000-10000

**种属反应性:** Rabbit

**克隆性:** Rabbit Polyclonal

**亚型:** Immunogen-specific rabbit IgG

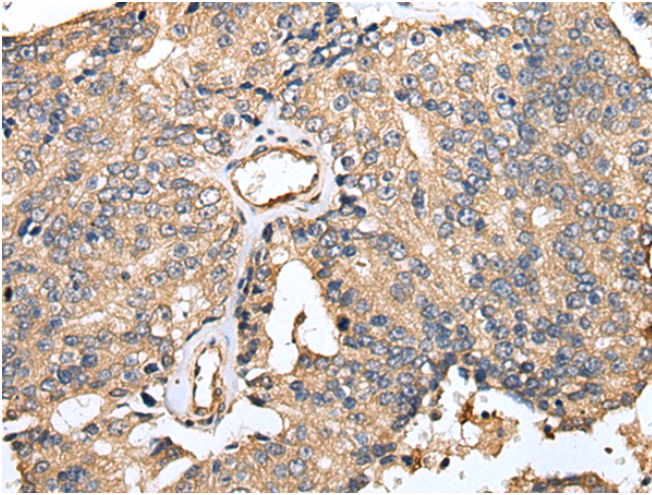
**纯化:** Antigen affinity purification

**种属反应性:** Human, Mouse

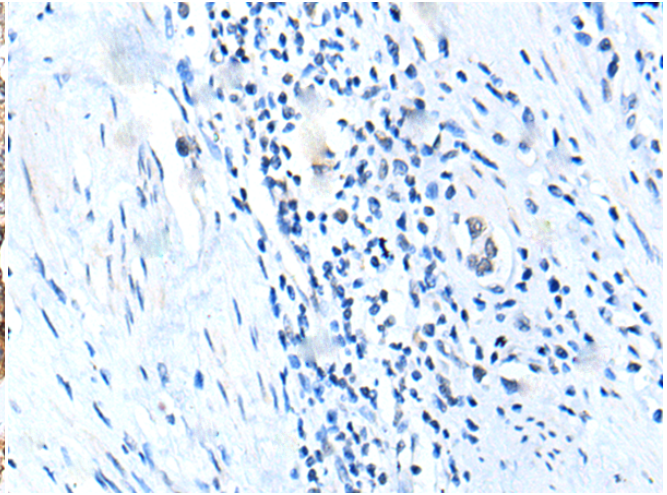
**成分:** PBS (without Mg<sup>2+</sup> and Ca<sup>2+</sup>), pH 7.4, 150 mM NaCl, 0.05% Sodium Azide and 40% glycerol

**研究领域:** Metabolism, Signal Transduction, Developmental Biology

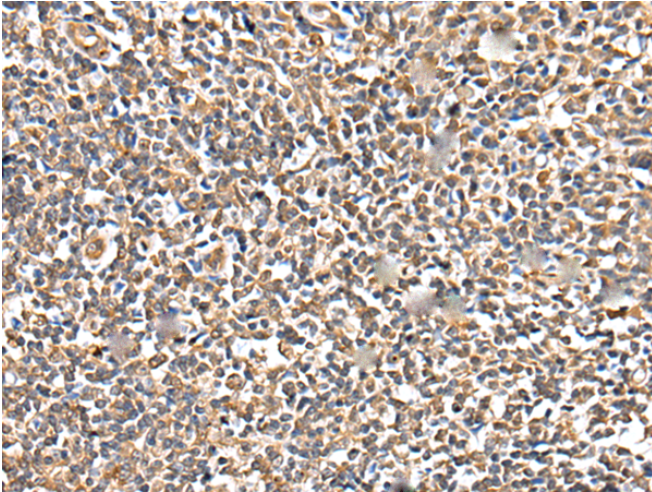
**储存和运输:** Store at -20°C. Avoid repeated freezing and thawing



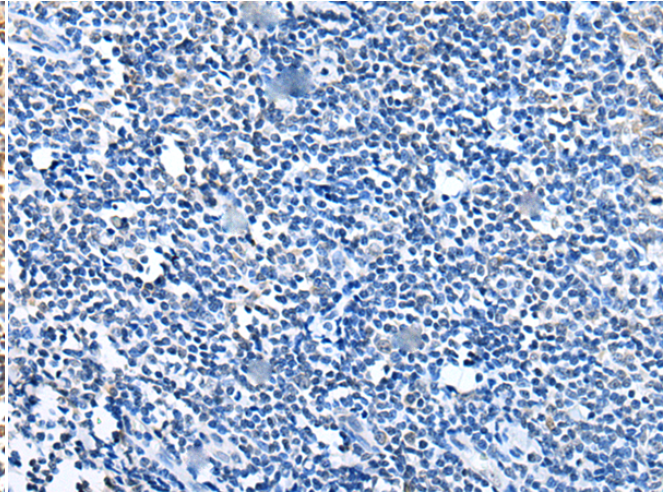
Immunohistochemistry analysis of paraffin embedded Human prostate cancer tissue using 211913 (TESC Antibody) at a dilution of 1/25 (Cytoplasm and Cell membrane).



In comparison with the IHC on the left, the same paraffin-embedded Human prostate cancer tissue is first treated with the fusion protein and then with 211913 (Anti-TESC Antibody) at dilution 1/25.



The image on the left is immunohistochemistry of paraffin-embedded Human tonsil tissue using 211913 (Anti-TESC Antibody) at a dilution of 1/25.



In comparison with the IHC on the left, the same paraffin-embedded Human tonsil tissue is first treated with fusion protein and then with D123875 (Anti-TESC Antibody) at dilution 1/25.