

## TERF2 RABBIT PAB

货号: S220011

产品全名: TERF2 兔多抗

基因符号: TRF2; TRBF2

**UNIPROT ID:** Q15554 (Gene Accession - NP\_005643.2)

**背景:** This gene encodes a telomere specific protein, TERF2, which is a component of the telomere nucleoprotein complex. This protein is present at telomeres in metaphase of the cell cycle, is a second negative regulator of telomere length and plays a key role in the protective activity of telomeres. While having similar telomere binding activity and domain organization, TERF2 differs from TERF1 in that its N terminus is basic rather than acidic.

**抗原:** Synthetic peptide of human TERF2

**经过测试的应用:** ELISA, IHC

**推荐稀释比:** IHC: 50-200; ELISA: 2000-5000

**种属反应性:** Rabbit

**克隆性:** Rabbit Polyclonal

**亚型:** Immunogen-specific rabbit IgG

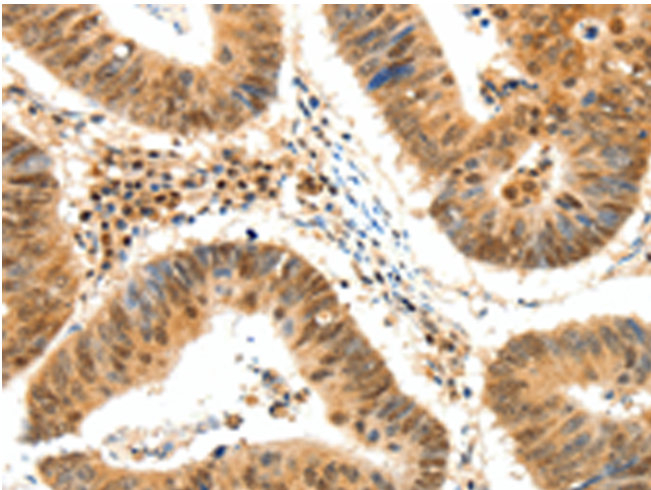
**纯化:** Antigen affinity purification

**种属反应性:** Human

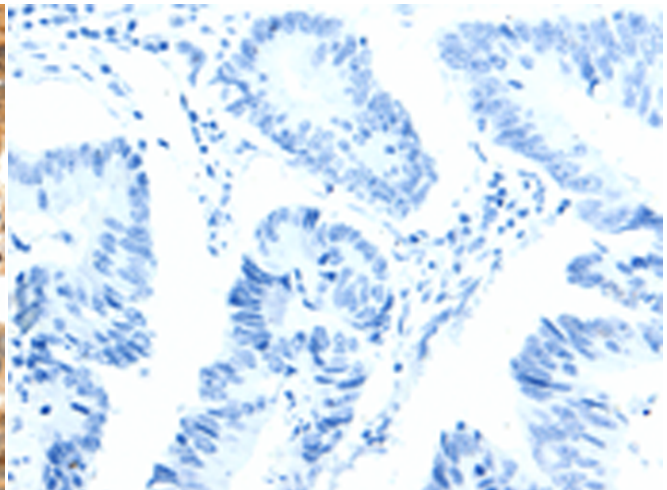
**成分:** PBS (without Mg<sup>2+</sup> and Ca<sup>2+</sup>), pH 7.4, 150 mM NaCl, 0.05% Sodium Azide and 40% glycerol

**研究领域:** Epigenetics and Nuclear Signaling, Cancer

**储存和运输:** Store at -20°C. Avoid repeated freezing and thawing



Immunohistochemistry analysis of paraffin embedded Human colon cancer tissue using 220011 (TERF2 Antibody) at a dilution of 1/50 (Cytoplasm, Nucleus).



In comparison with the IHC on the left, the same paraffin-embedded Human colon cancer tissue is first treated with the synthetic peptide and then with 220011 (Anti-TERF2 Antibody) at dilution 1/50.