

TERF1 RABBIT PAB

货号: S216857

产品全名: TERF1 兔多抗

基因符号 TRF; PIN2; TRF1; TRBF1; t-TRF1; hTRF1-AS

UNIPROT ID: P54274 (Gene Accession - BC029378)

背景: This gene encodes a telomere specific protein which is a component of the telomere nucleoprotein complex. This protein is present at telomeres throughout the cell cycle and functions as an inhibitor of telomerase, acting in cis to limit the elongation of individual chromosome ends. The protein structure contains a C-terminal Myb motif, a dimerization domain near its N-terminus and an acidic N-terminus. Two transcripts of this gene are alternatively spliced products.

抗原: Fusion protein of human TERF1

经过测试的应用: ELISA, WB, IHC

推荐稀释比: IHC: 25-100;WB: 500-2000;ELISA: 5000-10000

种属反应性: Rabbit

克隆性: Rabbit Polyclonal

亚型: Immunogen-specific rabbit IgG

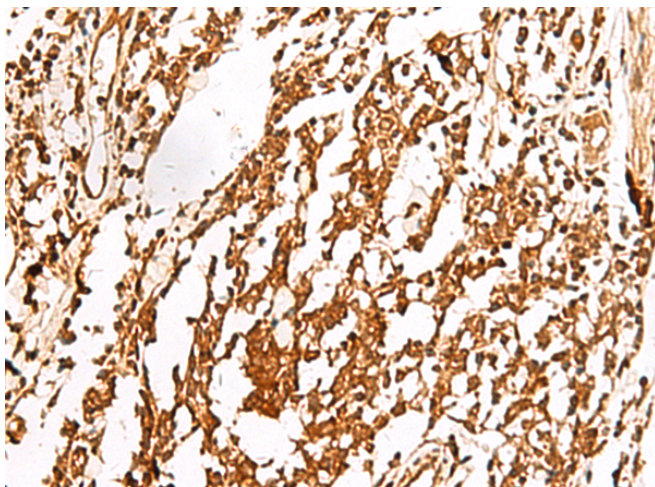
纯化: Antigen affinity purification

种属反应性: Human, Mouse

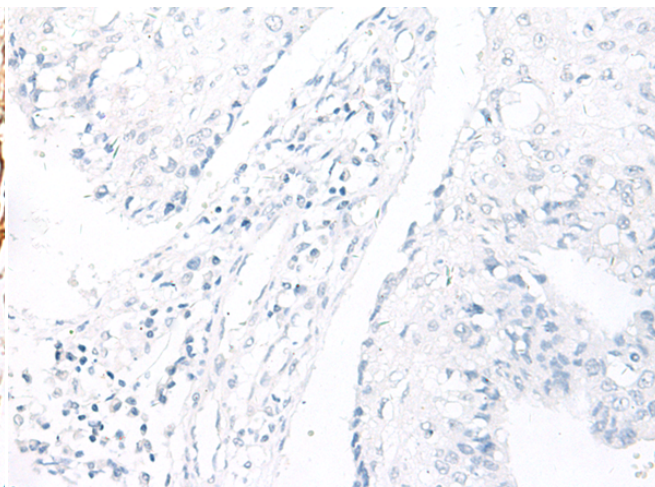
成分: PBS (without Mg²⁺ and Ca²⁺), pH 7.4, 150 mM NaCl, 0.05% Sodium Azide and 40% glycerol

研究领域: Epigenetics and Nuclear Signaling

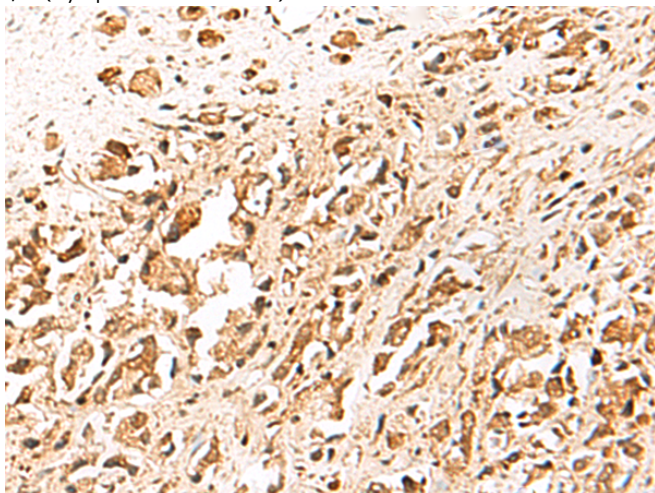
储存和运输: Store at -20°C. Avoid repeated freezing and thawing



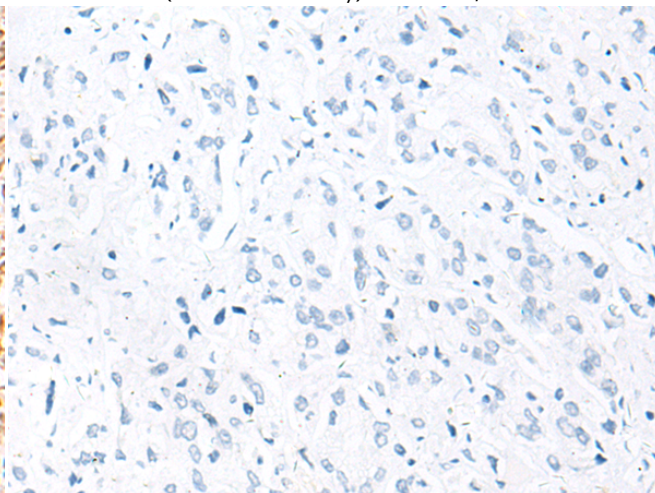
Immunohistochemistry analysis of paraffin embedded Human lung cancer tissue using 216857 (TERF1 Antibody) at a dilution of 1/30 (Cytoplasm and Nucleus).



In comparison with the IHC on the left, the same paraffin-embedded Human lung cancer tissue is first treated with the fusion protein and then with 216857 (Anti-TERF1 Antibody) at dilution 1/30.



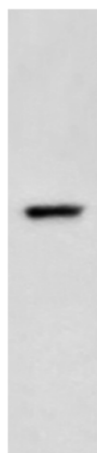
The image on the left is immunohistochemistry of paraffin-embedded Human prostate cancer tissue using 216857 (Anti-TERF1 Antibody) at a dilution of 1/30.



In comparison with the IHC on the left, the same paraffin-embedded Human prostate cancer tissue is first treated with fusion protein and then with D221366 (Anti-TERF1 Antibody) at dilution 1/30.

kDa

250 —
130 —
95 —
72 —
55 —
36 —
28 —



Gel: 8%SDS-PAGE, Lysate: 40 µg;
Lane: A549 cell lysate;
Primary antibody: 216857 (TERF1 Antibody) at dilution 1/400;
Secondary antibody: HRP-conjugated Goat anti rabbit IgG at 1/5000 dilution;
Exposure time: 10 seconds



Product Description

Pioneering GTPase and Oncogene Product Development since 2010
