

TDP 43 RABBIT PAB

货号: N225812

产品全名: TDP 43 兔多抗

基因符号 ALS10; TDP-43

UNIPROT ID: Q13148

背景: TDP43 (TAR DNA-binding protein 43) is involved in transcriptional regulation and exon splicing. While normal TDP43 is a nuclear protein, pathological TDP43 is a component of insoluble aggregates in patients with frontotemporal lobar degeneration (FTLD) and amyotrophic lateral sclerosis (ALS).

抗原: A synthesized peptide derived from human TDP43

经过测试的应用: WB,IHC-P,ICC/IF,IP,FC

推荐稀释比: WB: 1/500-1/1000 IHC: 1/50-1/100 IF: 1/50-1/200 IP: 1/20 FC: 1/50-1/100

种属反应性: Rabbit

克隆性: Rabbit Polyclonal

分子量: Calculated MW: 45 kDa; Observed MW: 45 kDa

亚型: IgG

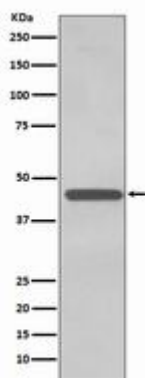
纯化: Affinity Chromatography

种属反应性: Human, Mouse and Rat,Zebrafish

成分: PBS (without Mg²⁺ and Ca²⁺), pH 7.3 containing 50% glycerol, 0.5% BSA and 0.02% sodium azide

研究领域: Microbiology

储存和运输: Store at -20°C. Avoid repeated freezing and thawing



Western blot analysis of TDP43 in K562 lysates using TDP 43 antibody.



Product Description

Pioneering GTPase and Oncogene Product Development since 2010
