

TBX6 RABBIT PAB

货号: S216515

产品全名: TBX6 兔多抗

基因符号 SCDO5

UNIPROT ID: O95947 (Gene Accession - BC026031)

背景: This gene is a member of a phylogenetically conserved family of genes that share a common DNA-binding domain, the T-box. T-box genes encode transcription factors involved in the regulation of developmental processes. Knockout studies in mice indicate that this gene is important for specification of paraxial mesoderm structures.

抗原: Fusion protein of human TBX6

经过测试的应用: ELISA, IHC

推荐稀释比: IHC: 20-100; ELISA: 2000-5000

种属反应性: Rabbit

克隆性: Rabbit Polyclonal

亚型: Immunogen-specific rabbit IgG

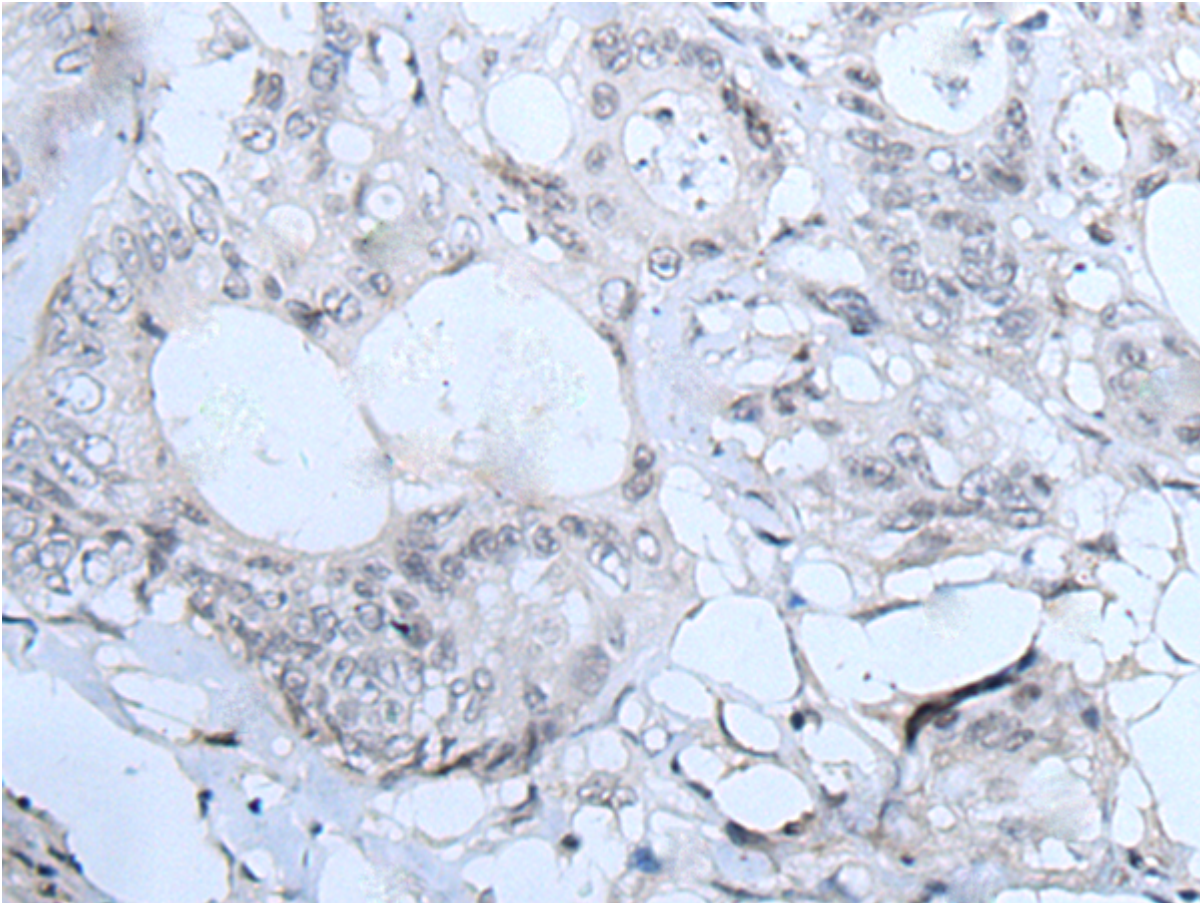
纯化: Antigen affinity purification

种属反应性: Human, Mouse, Rat

成分: PBS (without Mg²⁺ and Ca²⁺), pH 7.4, 150 mM NaCl, 0.05% Sodium Azide and 40% glycerol

研究领域: Epigenetics and Nuclear Signaling, Stem Cells, Developmental Biology

储存和运输: Store at -20°C. Avoid repeated freezing and thawing



Immunohistochemistry analysis of paraffin-embedded Human colorectal cancer tissue using 216515 (TBX6 Antibody) at a dilution of 1/30 (Nucleus).