

TBX2 RABBIT PAB

货号: S213531

产品全名: TBX2 兔多抗

基因符号

UNIPROT ID: Q13207 (Gene Accession - NP_005985)

背景: This gene is a member of a phylogenetically conserved family of genes that share a common DNA-binding domain, the T-box. T-box genes encode transcription factors involved in the regulation of developmental processes. This gene product is the human homolog of mouse Tbx2, and shares strong sequence similarity with Drosophila omb protein. Expression studies indicate that this gene may have a potential role in tumorigenesis as an immortalizing agent. Transcript heterogeneity due to alternative polyadenylation has been noted for this gene.

抗原: Synthetic peptide of human TBX2

经过测试的应用: ELISA, IHC

推荐稀释比: IHC: 25-100; ELISA: 1000-5000

种属反应性: Rabbit

克隆性: Rabbit Polyclonal

亚型: Immunogen-specific rabbit IgG

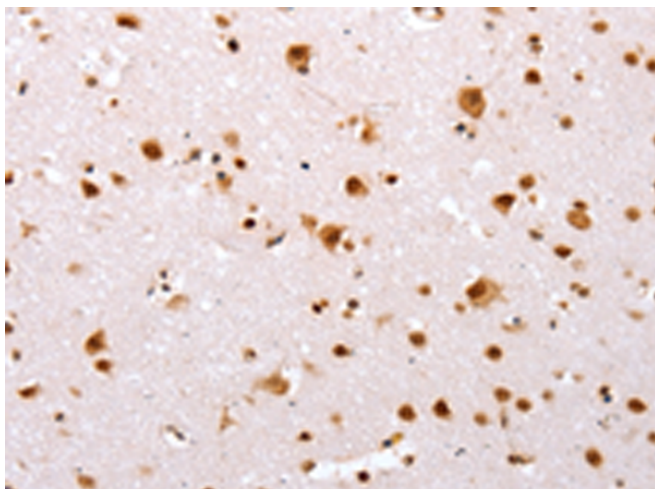
纯化: Antigen affinity purification

种属反应性: Human, Mouse

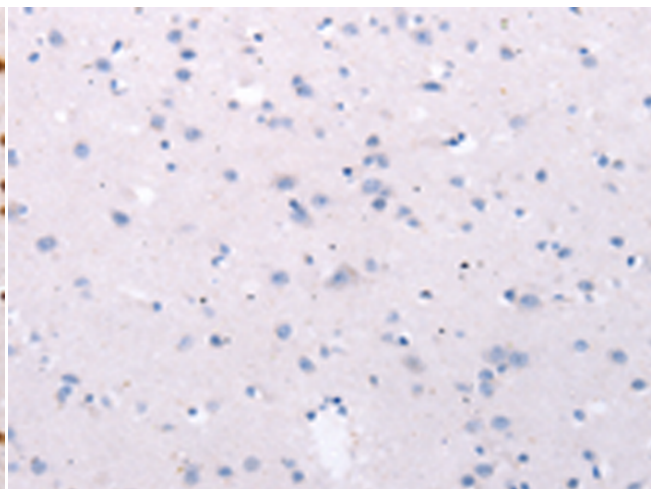
成分: PBS (without Mg²⁺ and Ca²⁺), pH 7.4, 150 mM NaCl, 0.05% Sodium Azide and 40% glycerol

研究领域: Epigenetics and Nuclear Signaling, Cancer

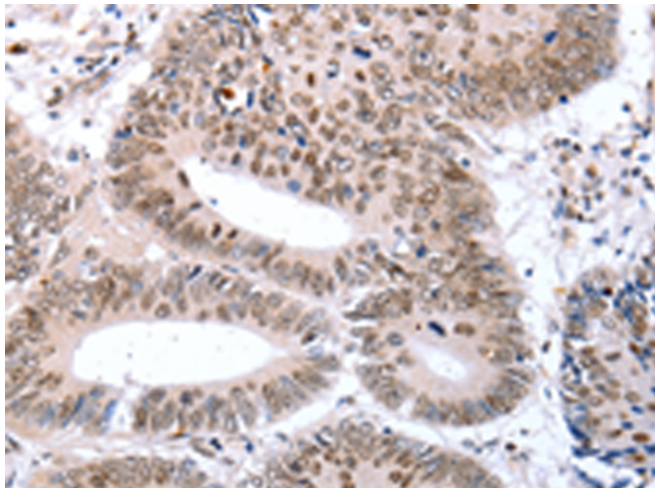
储存和运输: Store at -20°C. Avoid repeated freezing and thawing



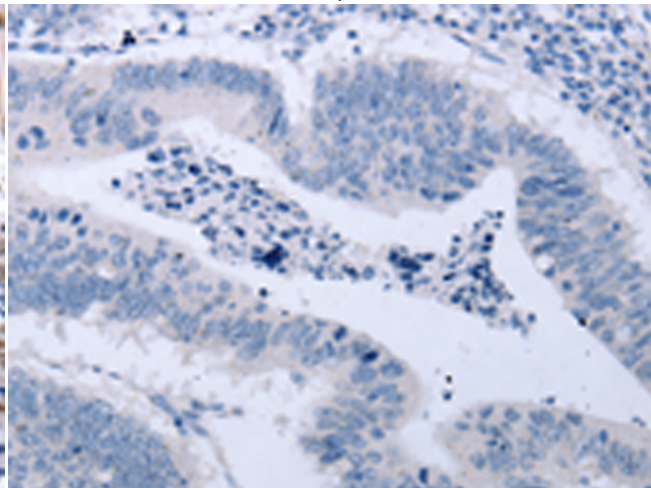
Immunohistochemistry analysis of paraffin embedded Human brain tissue using 213531(TBX2 Antibody) at a dilution of 1/32(Cytoplasm, Nucleus).



In comparison with the IHC on the left, the same paraffin-embedded Human brain tissue is first treated with the synthetic peptide and then with 213531(Anti-TBX2 Antibody) at dilution 1/32.



The image on the left is immunohistochemistry of paraffin-embedded Human colon cancer tissue using 213531(Anti-TBX2 Antibody) at a dilution of 1/32.



In comparison with the IHC on the left, the same paraffin-embedded Human colon cancer tissue is first treated with synthetic peptide and then with D160369(Anti-TBX2 Antibody) at dilution 1/32.



Product Description

Pioneering GTPase and Oncogene Product Development since 2010
