

## TBX10 RABBIT PAB

货号: S217884

产品全名: TBX10 兔多抗

基因符号 TBX7; TBX13

**UNIPROT ID:** O75333 (Gene Accession - BC113485)

**背景:** This gene encodes a member of the T-box family of transcription factors. These transcription factors share a DNA-binding domain called the T-box and play a role in several developmental processes including early embryonic cell fate and organogenesis. The encoded protein is a member of the T-box 1 subfamily. Mutations in this gene are thought to be a cause of isolated cleft lip with or without cleft palate.

**抗原:** Fusion protein of human TBX10

**经过测试的应用:** ELISA, IHC

**推荐稀释比:** IHC: 25-100; ELISA: 2000-5000

**种属反应性:** Rabbit

**克隆性:** Rabbit Polyclonal

**亚型:** Immunogen-specific rabbit IgG

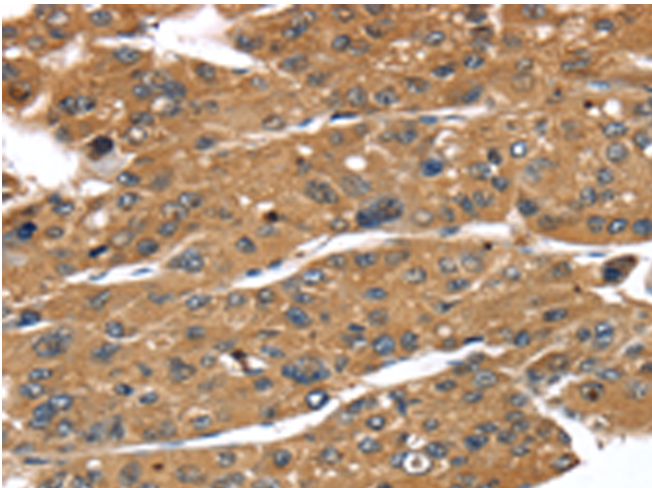
**纯化:** Antigen affinity purification

**种属反应性:** Human

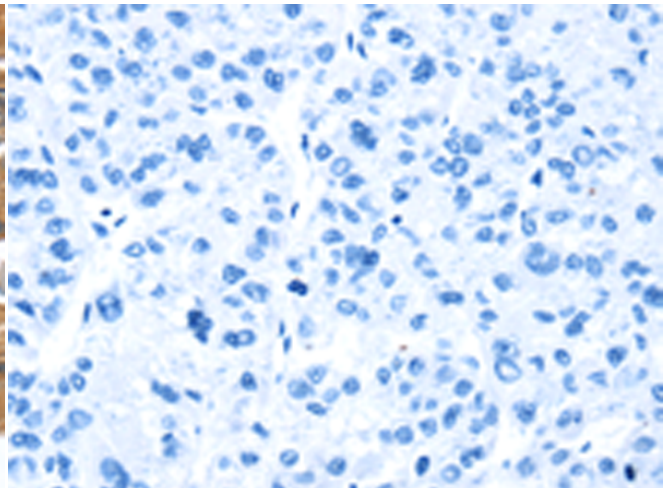
**成分:** PBS (without Mg<sup>2+</sup> and Ca<sup>2+</sup>), pH 7.4, 150 mM NaCl, 0.05% Sodium Azide and 40% glycerol

**研究领域:** Epigenetics and Nuclear Signaling

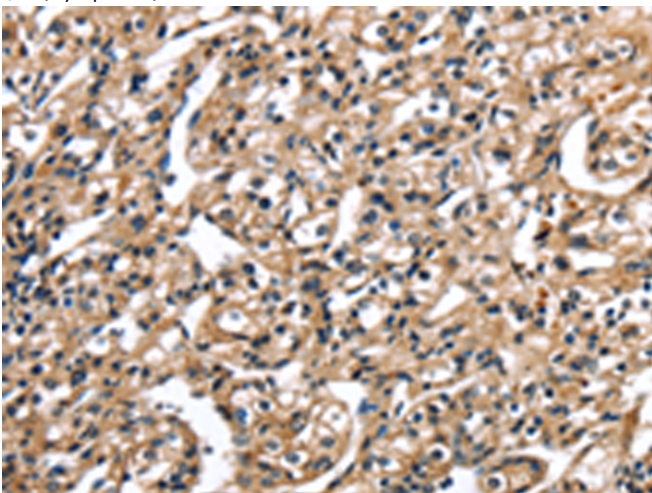
**储存和运输:** Store at -20°C. Avoid repeated freezing and thawing



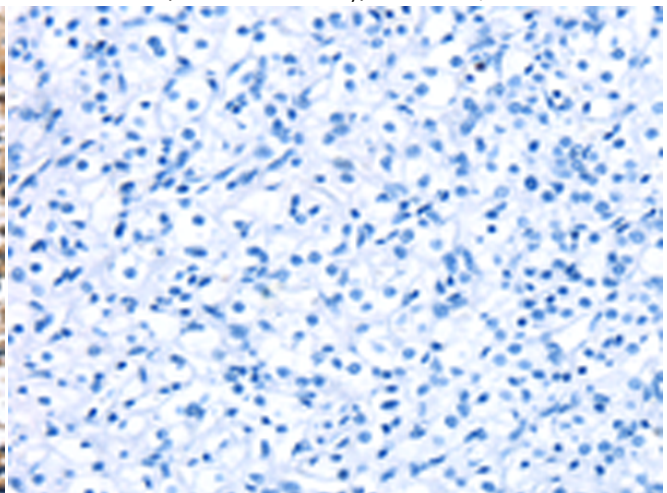
Immunohistochemistry analysis of paraffin embedded Human liver cancer tissue using 217884(TBX10 Antibody) at a dilution of 1/35(Cytoplasm).



In comparison with the IHC on the left, the same paraffin-embedded Human liver cancer tissue is first treated with the fusion protein and then with 217884(Anti-TBX10 Antibody) at dilution 1/35.



The image on the left is immunohistochemistry of paraffin-embedded Human prostate cancer tissue using 217884(Anti-TBX10 Antibody) at a dilution of 1/35.



In comparison with the IHC on the left, the same paraffin-embedded Human prostate cancer tissue is first treated with fusion protein and then with D223298(Anti-TBX10 Antibody) at dilution 1/35.



# Product Description

Pioneering GTPase and Oncogene Product Development since 2010

---