

TBL1XR1 RABBIT PAB

货号: S217883

产品全名: TBL1XR1 兔多抗

基因符号: C21; DC42; IRA1; MRD41; TBLR1

UNIPROT ID: Q9BZK7 (Gene Accession - BC113421)

背景: This gene is a member of the WD40 repeat-containing gene family and shares sequence similarity with transducin (beta)-like 1X-linked (TBL1X). The protein encoded by this gene is thought to be a component of both nuclear receptor corepressor (N-CoR) and histone deacetylase 3 (HDAC 3) complexes, and is required for transcriptional activation by a variety of transcription factors. Mutations in these gene have been associated with some autism spectrum disorders, and one finding suggests that haploinsufficiency of this gene may be a cause of intellectual disability with dysmorphism. Mutations in this gene as well as recurrent translocations involving this gene have also been observed in some tumors.

抗原: Fusion protein of human TBL1XR1

经过测试的应用: ELISA, WB, IHC

推荐稀释比: IHC: 50-200;WB: 1000-5000;ELISA: 5000-10000

种属反应性: Rabbit

克隆性: Rabbit Polyclonal

亚型: Immunogen-specific rabbit IgG

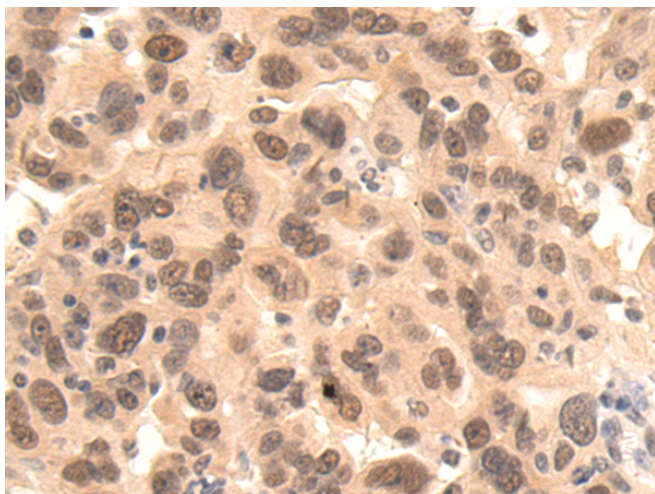
纯化: Antigen affinity purification

种属反应性: Human, Mouse

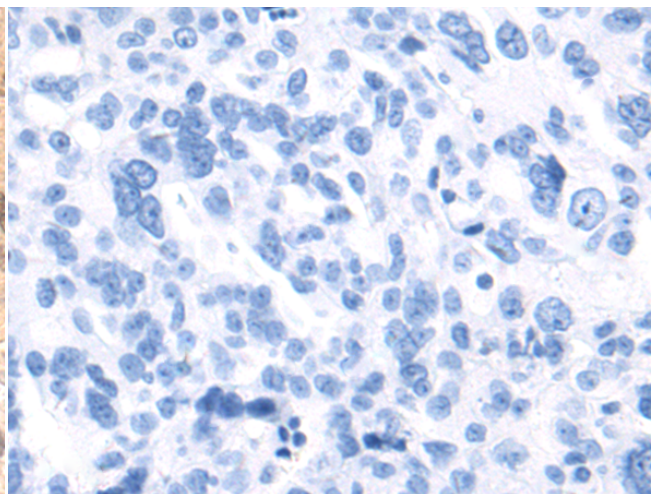
成分: PBS (without Mg²⁺ and Ca²⁺), pH 7.4, 150 mM NaCl, 0.05% Sodium Azide and 40% glycerol

研究领域: Epigenetics and Nuclear Signaling, Cancer, Metabolism

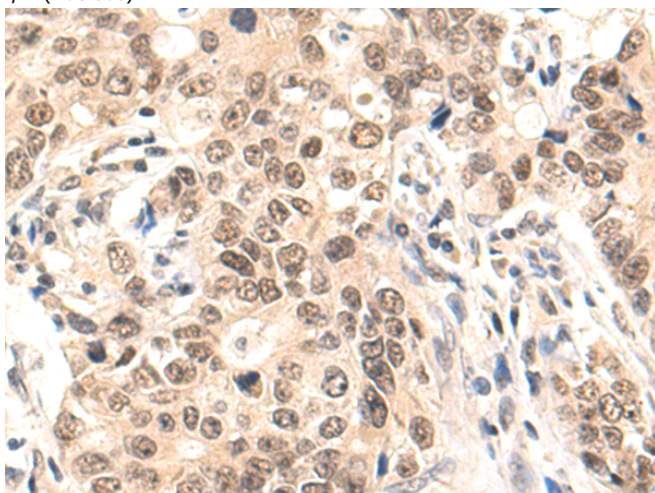
储存和运输: Store at -20°C. Avoid repeated freezing and thawing



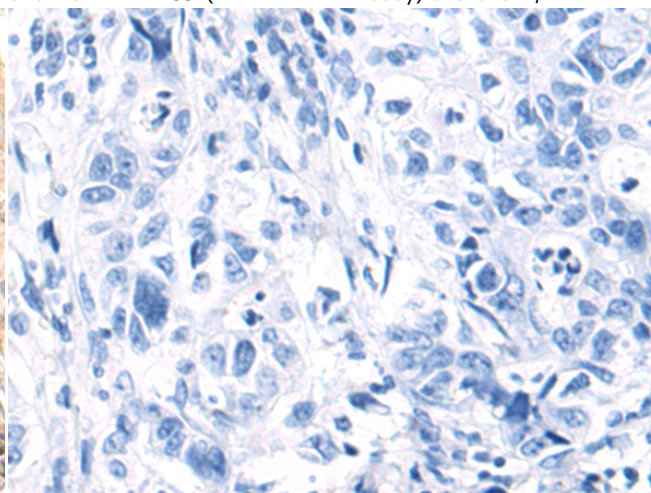
Immunohistochemistry analysis of paraffin embedded Human breast cancer tissue using 217883(TBLIXR1 Antibody) at a dilution of 1/75(Nucleus).



In comparison with the IHC on the left, the same paraffin-embedded Human breast cancer tissue is first treated with the fusion protein and then with 217883(Anti-TBLIXR1 Antibody) at dilution 1/75.

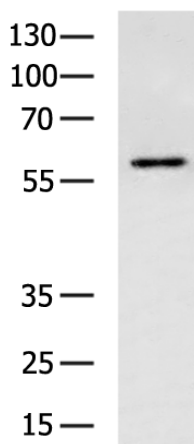


The image on the left is immunohistochemistry of paraffin-embedded Human gastric cancer tissue using 217883(Anti-TBLIXR1 Antibody) at a dilution of 1/75.



In comparison with the IHC on the left, the same paraffin-embedded Human gastric cancer tissue is first treated with fusion protein and then with D223295(Anti-TBLIXR1 Antibody) at dilution 1/75.

kDa



Gel: 8%SDS-PAGE, Lysate: 40 µg;
 Lane: K562 cell lysate;
 Primary antibody: 217883(TBLIXR1 Antibody) at dilution 1/1200;
 Secondary antibody: HRP-conjugated Goat anti rabbit IgG at 1/5000 dilution;
 Exposure time: 10 seconds



Product Description

Pioneering GTPase and Oncogene Product Development since 2010
