

TBC1D4 RABBIT PAB

货号: S221000

产品全名: TBC1D4 兔多抗

基因符号: AS160

UNIPROT ID: O60343 (Gene Accession - NP_055647)

背景: TBC1 domain family member 4 (TBC1D4), also designated AS160, can be insulin- and/or AKT1-induced. Insulin-stimulated phosphorylation is required for GLUT4 translocation. TBC1D4 may play a role as a GTPase activating protein for proteins in the Rab family. It is expressed primarily in skeletal muscle and heart, as well as spleen, lymph node and leukocytes. Defects in the TBC1D4 gene may cause atopic dermatitis (AD), sometimes referred to as eczema, an atopic chronic skin disease. The skin of affected individuals reacts to irritants or allergens and becomes red, flaky and itchy. The skin is also more vulnerable to inflammations, and symptoms can grow or disappear over time.

抗原: Synthetic peptide of human TBC1D4

经过测试的应用: ELISA, IHC

推荐稀释比: IHC: 25-100; ELISA: 2000-5000

种属反应性: Rabbit

克隆性: Rabbit Polyclonal

亚型: Immunogen-specific rabbit IgG

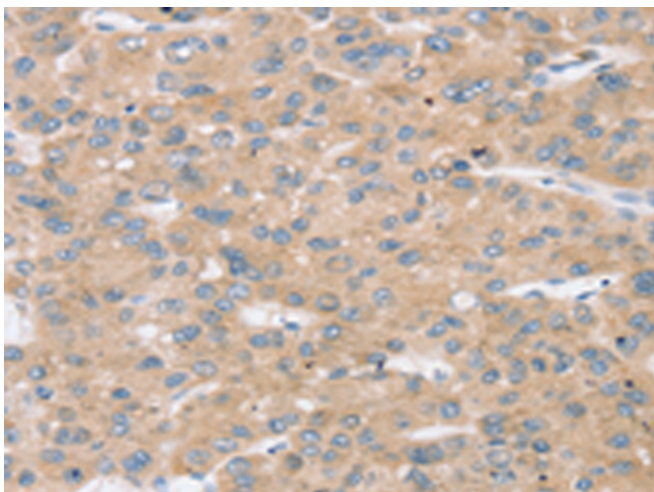
纯化: Antigen affinity purification

种属反应性: Human, Mouse

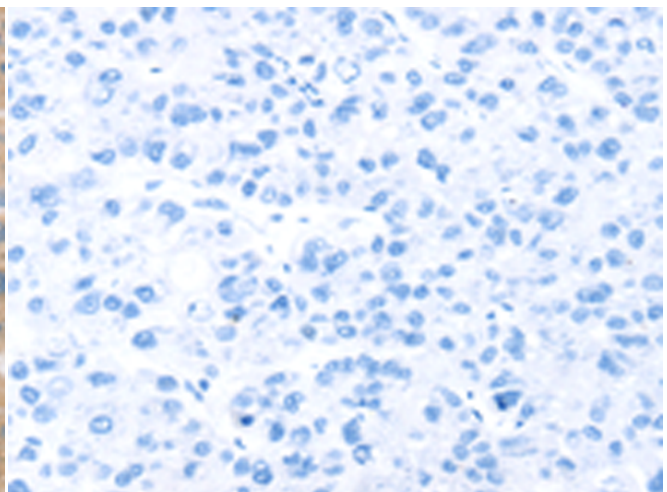
成分: PBS (without Mg²⁺ and Ca²⁺), pH 7.4, 150 mM NaCl, 0.05% Sodium Azide and 40% glycerol

研究领域: Signal Transduction

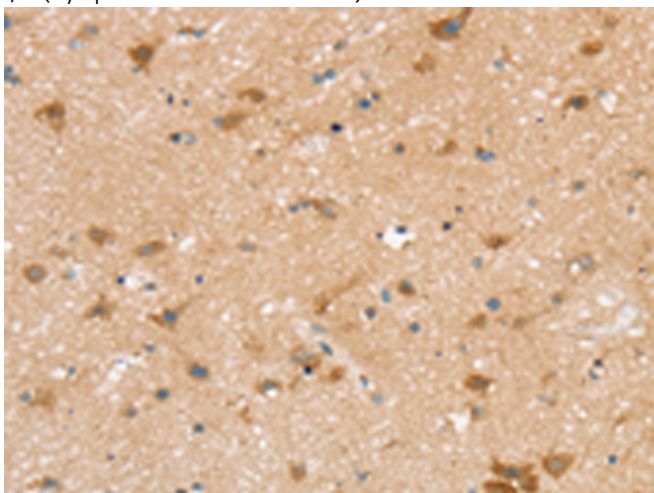
储存和运输: Store at -20°C. Avoid repeated freezing and thawing



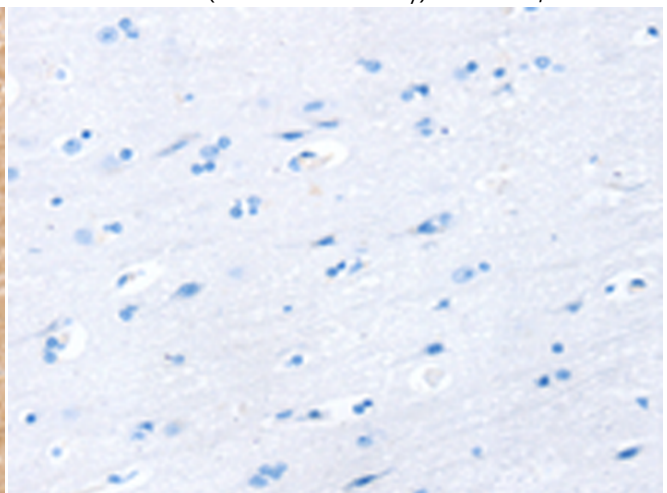
Immunohistochemistry analysis of paraffin embedded Human liver cancer tissue using 221000(TBC1D4 Antibody) at a dilution of 1/30(Cytoplasm and Cell membrane).



In comparison with the IHC on the left, the same paraffin-embedded Human liver cancer tissue is first treated with the synthetic peptide and then with 221000(Anti-TBC1D4 Antibody) at dilution 1/30.



The image on the left is immunohistochemistry of paraffin-embedded Human brain tissue using 221000(Anti-TBC1D4 Antibody) at a dilution of 1/30.



In comparison with the IHC on the left, the same paraffin-embedded Human brain tissue is first treated with synthetic peptide and then with D262341(Anti-TBC1D4 Antibody) at dilution 1/30.



Product Description

Pioneering GTPase and Oncogene Product Development since 2010
