

TAK1 RABBIT PAB

货号: N225407

产品全名: TAK1 兔多抗

基因符号 MAP3K7; TAK1; Mitogen-activated protein kinase kinase kinase 7; Transforming growth factor-beta-activated kinase 1; TGF-beta-activated kinase 1

UNIPROT ID: O43318

背景: Component of a protein kinase signal transduction cascade. Mediator of TRAF6 and TGF-beta signal transduction. Activates IKBKB and MAPK8 in response to TRAF6 signaling. Stimulates NF-kappa-B activation and the p38 MAPK pathway. In osmotic stress signaling, plays a major role in the activation of MAPK8/JNK, but not that of NF-kappa-B.

抗原: The antiserum was produced against synthesized peptide derived from human MAP3K7. AA range:161-210

经过测试的应用: ICC/IF, WB, IHC-F, IHC-P, ELISA

推荐稀释比: WB: 1/500-1/1000 IHC: 1/50-1/100 IF: 1/50-1/200 ELISA: 1/10000

种属反应性: Rabbit

克隆性: Rabbit Polyclonal

分子量: Calculated MW: 67 kDa; Observed MW: 70 kDa

亚型: IgG

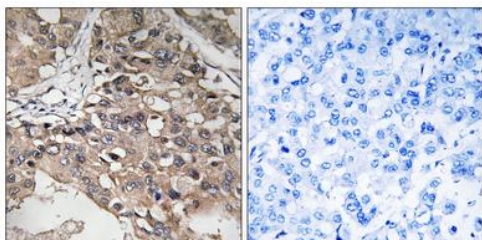
纯化: Affinity Purified

种属反应性: Human, Mouse and Rat

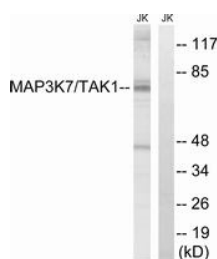
成分: PBS (without Mg²⁺ and Ca²⁺), pH 7.3 containing 50% glycerol, 0.5% BSA and 0.02% sodium azide

研究领域: Signal Transduction

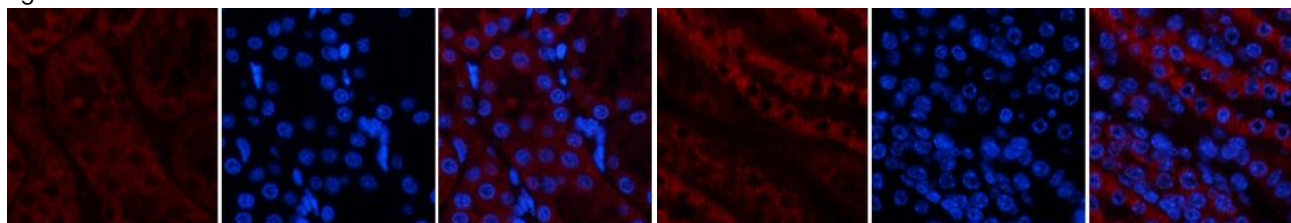
储存和运输: Store at -20°C. Avoid repeated freezing and thawing



Immunohistochemistry analysis of paraffin-embedded Human breast carcinoma using TAK1 antibody. High-pressure and temperature Sodium Citrate pH 6.0 was used for antigen retrieval. Sample with blocking peptide on the right.



Western blot analysis of TAK1 in Jurkat lysates, treated with heat shock lysates using TAK1 antibody. The lane on the right is blocked with the synthesized peptide.



Immunofluorescence analysis of TAK1 in rat kidney using Tak1 antibody (red), and DAPI (blue).

Immunofluorescence analysis of TAK1 in mouse kidney using Tak1 antibody (red), and DAPI (blue).