

TAF A4 RABBIT PAB

货号: S219205

产品全名: TAF A4 兔多抗

基因符号 TAF A-4; FAM19A4

UNIPROT ID: Q96LR4 (Gene Accession - BC031566)

背景: This gene is a member of the TAF A family which is composed of five highly homologous genes that encode small secreted proteins. These proteins contain conserved cysteine residues at fixed positions, and are distantly related to MIP-1alpha, a member of the CC-chemokine family. The TAF A proteins are predominantly expressed in specific regions of the brain, and are postulated to function as brain-specific chemokines or neurokinins, that act as regulators of immune and nervous cells. Alternatively spliced transcript variants have been observed for this gene. [provided by RefSeq, Nov 2011]

抗原: Fusion protein of human TAF A4

经过测试的应用: ELISA, WB, IHC

推荐稀释比: IHC: 50-200;WB: 500-2000;ELISA: 5000-10000

种属反应性: Rabbit

克隆性: Rabbit Polyclonal

亚型: Immunogen-specific rabbit IgG

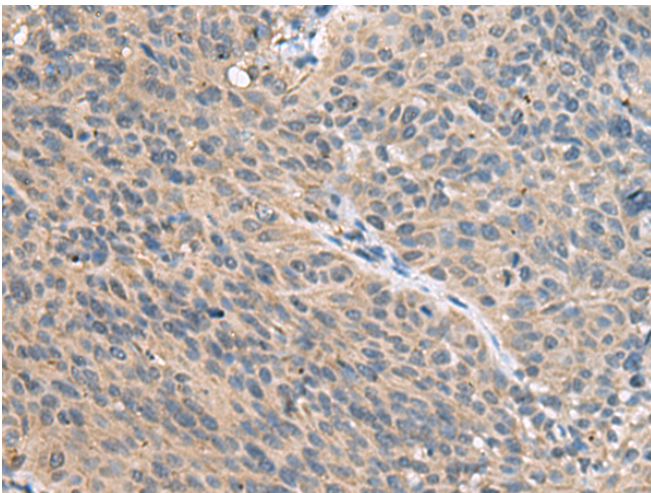
纯化: Antigen affinity purification

种属反应性: Human, Mouse, Rat

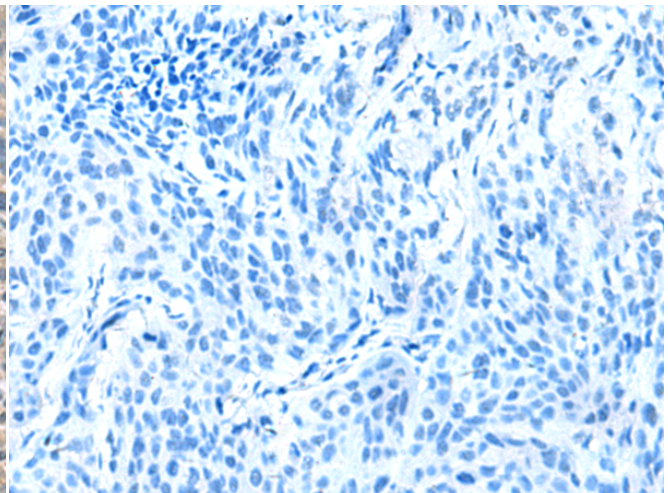
成分: PBS (without Mg²⁺ and Ca²⁺), pH 7.4, 150 mM NaCl, 0.05% Sodium Azide and 40% glycerol

研究领域: Immunology

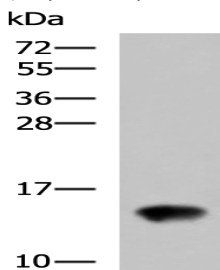
储存和运输: Store at -20°C. Avoid repeated freezing and thawing



Immunohistochemistry analysis of paraffin embedded Human cervical cancer tissue using 219205(TAF A4 Antibody) at a dilution of 1/55(Secreted).



In comparison with the IHC on the left, the same paraffin-embedded Human cervical cancer tissue is first treated with the fusion protein and then with 219205(Anti-TAF A4 Antibody) at dilution 1/55.



Gel: 12%SDS-PAGE, Lysate: 40 µg;

Lane: Rat kidney tissue lysate;

Primary antibody: 219205(TAF A4 Antibody) at dilution 1/650;

Secondary antibody: HRP-conjugated Goat anti rabbit IgG at 1/5000 dilution;

Exposure time: 1 minute