

TAF15 RABBIT MAB

货号: N262965

产品全名: TAF15 兔单克隆抗体

基因符号 TAF15; RBP56; TAF2N; TATA-binding protein-associated factor 2N; 68 kDa TATA-binding protein-associated factor; TAF(II)68; TAFII68; RNA-binding protein 56

UNIPROT ID: Q92804

背景: RNA and ssDNA-binding protein that may play specific roles during transcription initiation at distinct promoters. Can enter the preinitiation complex together with the RNA polymerase II (Pol II).

抗原: A synthetic peptide of human TAF15

经过测试的应用: WB,IHC-F,IHC-P,ICC/IF

推荐稀释比: WB: 1/500-1/1000 IHC: 1/50-1/100 IF: 1/50-1/200

种属反应性: Rabbit

克隆性: Rabbit Monoclonal

克隆编号: R04-8A3

分子量: Calculated MW: 62 kDa; Observed MW: 77 kDa

亚型: IgG

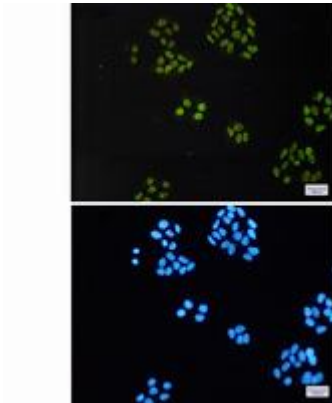
纯化: Affinity Purified

种属反应性: Human, Mouse and Rat

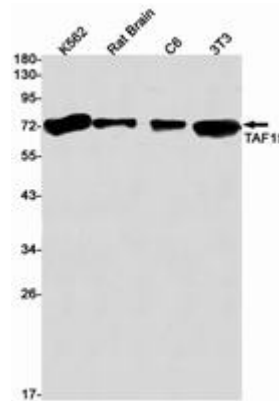
成分: PBS (without Mg²⁺ and Ca²⁺), pH 7.3 containing 50% glycerol, 0.5% BSA and 0.02% sodium azide

研究领域: Epigenetics and Nuclear Signaling

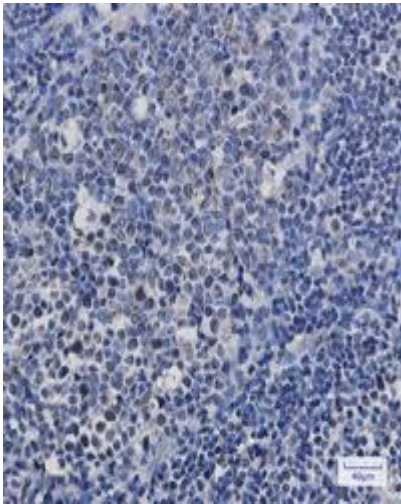
储存和运输: Store at -20°C. Avoid repeated freezing and thawing



Immunocytochemistry analysis of TAF15 (green) in HeLa using TAF15 antibody, and DAPI (blue)



Western blot analysis of TAF15 in K562, rat Brain, C6, 3T3 lysates using TAF15 antibody.



Immunohistochemistry analysis of paraffin-embedded Human tonsil using TAF15 antibody. High-pressure and temperature Sodium Citrate pH 6.0 was used for antigen retrieval.