

TACO1 RABBIT PAB

货号: S222040

产品全名: TACO1 兔多抗

基因符号: CCDC44; MC4DN8

UNIPROT ID: Q9BSH4 (Gene Accession - NP_057444)

背景: This gene encodes a mitochondrial protein that function as a translational activator of mitochondrially-encoded cytochrome c oxidase I. Mutations in this gene are associated with Leigh syndrome.

抗原: Synthetic peptide of human TACO1

经过测试的应用: ELISA, WB, IHC

推荐稀释比: IHC: 50-200;WB: 1000-5000;ELISA: 2000-5000

种属反应性: Rabbit

克隆性: Rabbit Polyclonal

亚型: Immunogen-specific rabbit IgG

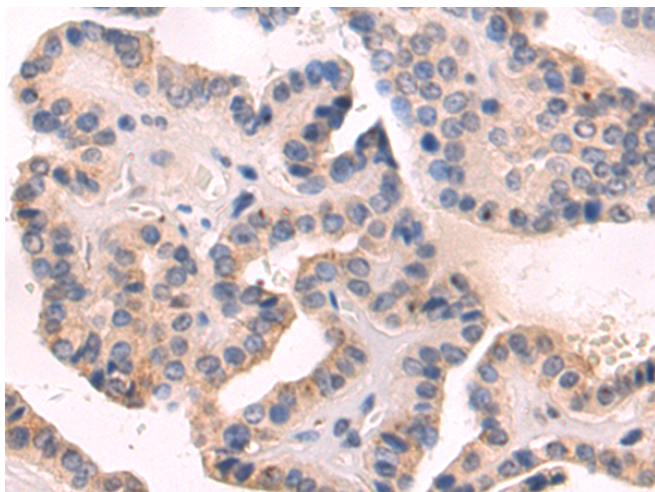
纯化: Antigen affinity purification

种属反应性: Human, Mouse, Rat

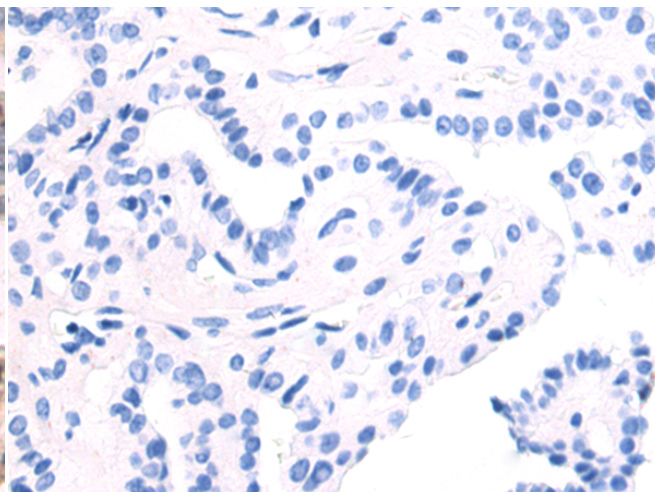
成分: PBS (without Mg²⁺ and Ca²⁺), pH 7.4, 150 mM NaCl, 0.05% Sodium Azide and 40% glycerol

研究领域: Metabolism, Epigenetics and Nuclear Signaling, Cardiovascular

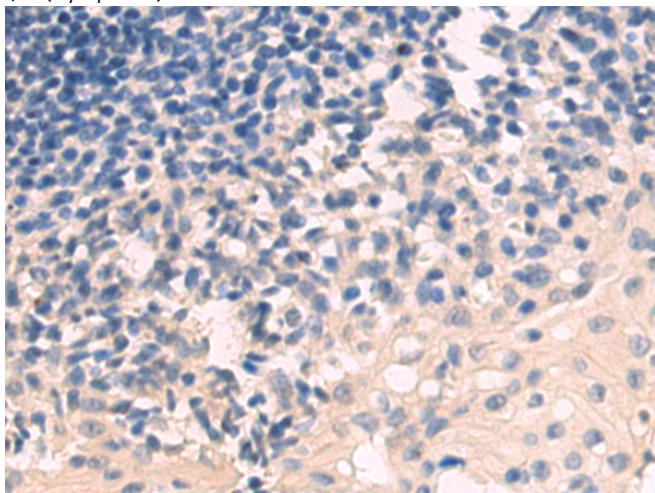
储存和运输: Store at -20°C. Avoid repeated freezing and thawing



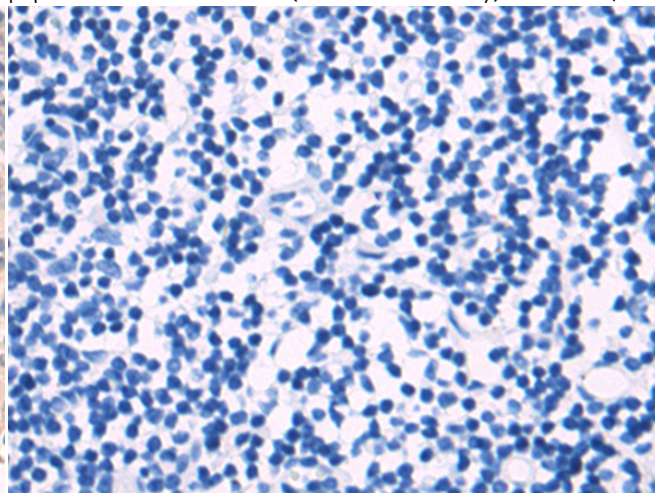
Immunohistochemistry analysis of paraffin embedded Human thyroid cancer tissue using 222040(TACO1 Antibody) at a dilution of 1/50(Cytoplasm).



In comparison with the IHC on the left, the same paraffin-embedded Human thyroid cancer tissue is first treated with the synthetic peptide and then with 222040(Anti-TACO1 Antibody) at dilution 1/50.

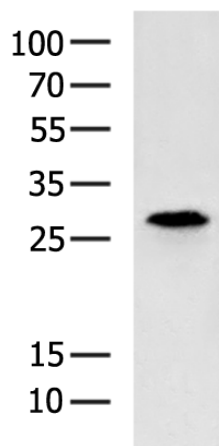


The image on the left is immunohistochemistry of paraffin-embedded Human tonsil tissue using 222040(Anti-TACO1 Antibody) at a dilution of 1/50.



In comparison with the IHC on the left, the same paraffin-embedded Human tonsil tissue is first treated with synthetic peptide and then with D263924(Anti-TACO1 Antibody) at dilution 1/50.

kDa



Gel: 12%SDS-PAGE, Lysate: 40 µg;
Lane: Hela cell lysate;
Primary antibody: 222040(TACO1 Antibody) at dilution 1/1000;
Secondary antibody: HRP-conjugated Goat anti rabbit IgG at 1/5000 dilution;
Exposure time: 1 minute



Product Description

Pioneering GTPase and Oncogene Product Development since 2010
