

TAB3 RABBIT PAB

货号: S217590

产品全名: TAB3 兔多抗

基因符号: NAPI; MAP3K7IP3

UNIPROT ID: Q8N5C8 (Gene Accession - BC032526)

背景: The product of this gene functions in the NF-kappaB signal transduction pathway. The encoded protein, and the similar and functionally redundant protein MAP3K7IP2/TAB2, forms a ternary complex with the protein kinase MAP3K7/TAK1 and either TRAF2 or TRAF6 in response to stimulation with the pro-inflammatory cytokines TNF or IL-1. Subsequent MAP3K7/TAK1 kinase activity triggers a signaling cascade leading to activation of the NF-kappaB transcription factor. The human genome contains a related pseudogene.

抗原: Fusion protein of human TAB3

经过测试的应用: ELISA, WB, IHC

推荐稀释比: IHC: 50-200; WB: 200-1000; ELISA: 1000-2000

种属反应性: Rabbit

克隆性: Rabbit Polyclonal

亚型: Immunogen-specific rabbit IgG

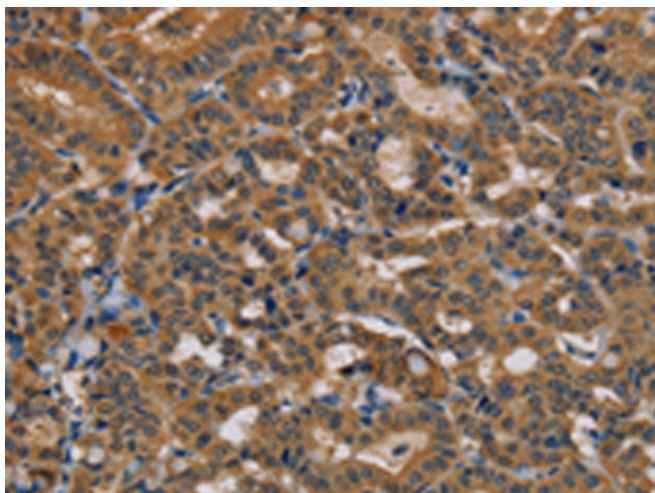
纯化: Antigen affinity purification

种属反应性: Human, Mouse

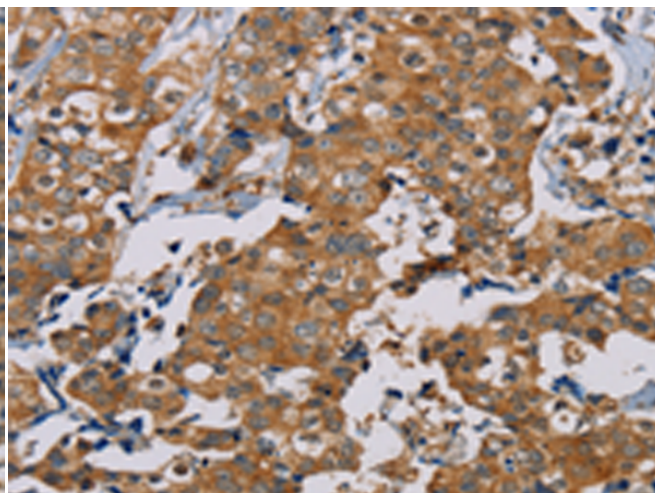
成分: PBS (without Mg²⁺ and Ca²⁺), pH 7.4, 150 mM NaCl, 0.05% Sodium Azide and 40% glycerol

研究领域: Signal Transduction, Epigenetics and Nuclear Signaling, Immunology

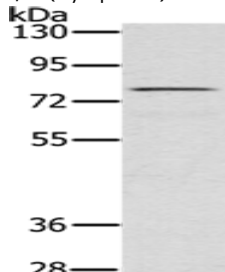
储存和运输: Store at -20°C. Avoid repeated freezing and thawing



Immunohistochemistry analysis of paraffin-embedded Human thyroid cancer tissue using 217590(TAB3 Antibody) at a dilution of 1/35(Cytoplasm).



Immunohistochemistry analysis of paraffin-embedded Human thyroid cancer tissue using 217590(Anti-TAB3 Antibody) at a dilution of 1/35.



Gel: 6%SDS-PAGE, Lysate: 40 µg;

Lane: Raw264.7 cells;

Primary antibody: 217590(TAB3 Antibody) at dilution 1/500;

Secondary antibody: Goat anti rabbit IgG at 1/8000 dilution;

Exposure time: 10 seconds