

SYT16 RABBIT PAB

货号: S221324

产品全名: SYT16 兔多抗

基因符号 yt14r; SYT14L; sytl4r; Strep14; CHR14SYT

UNIPROT ID: Q17RD7 (Gene Accession - NP_114120)

背景: May be involved in the trafficking and exocytosis of secretory vesicles in non-neuronal tissues. Is Ca²⁺-independent.

抗原: Synthetic peptide of human SYT16

经过测试的应用: ELISA, IHC

推荐稀释比: IHC: 25-100; ELISA: 5000-10000

种属反应性: Rabbit

克隆性: Rabbit Polyclonal

亚型: Immunogen-specific rabbit IgG

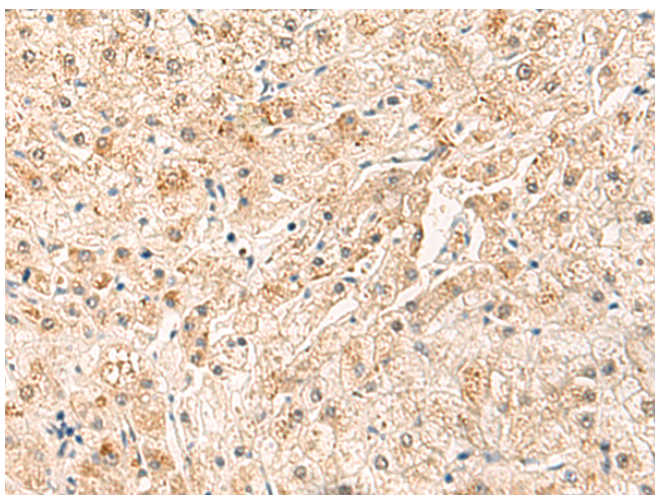
纯化: Antigen affinity purification

种属反应性: Human, Mouse

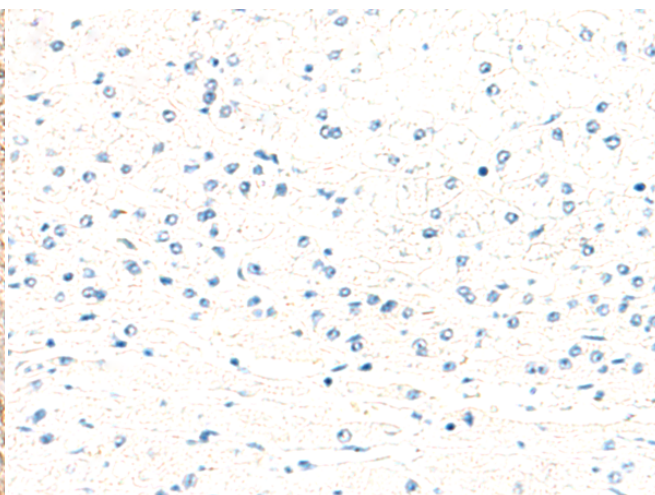
成分: PBS (without Mg²⁺ and Ca²⁺), pH 7.4, 150 mM NaCl, 0.05% Sodium Azide and 40% glycerol

研究领域: Neuroscience

储存和运输: Store at -20°C. Avoid repeated freezing and thawing



Immunohistochemistry analysis of paraffin embedded Human liver cancer tissue using 221324(SYT16 Antibody) at a dilution of 1/30(Cytoplasm).



In comparison with the IHC on the left, the same paraffin-embedded Human liver cancer tissue is first treated with the synthetic peptide and then with 221324(Anti-SYT16 Antibody) at dilution 1/30.