

SYNTROPHIN ALPHA 1 RABBIT MAB

货号: N262962

产品全名: Syntrophin alpha 1 兔单克隆抗体

基因符号 Alpha 1 syntrophin; LQT12; SNT1; Snta1; Syntrophin 1; TACIP1

UNIPROT ID: Q13424

背景: Adapter protein that binds to and probably organizes the subcellular localization of a variety of membrane proteins. May link various receptors to the actin cytoskeleton and the extracellular matrix via the dystrophin glycoprotein complex.

抗原: A synthetic peptide of human Syntrophin alpha 1

经过测试的应用: WB,IHC-F,IHC-P,ICC/IF

推荐稀释比: WB: 1/500-1/1000 IHC: 1/50-1/100 IF: 1/50-1/200

种属反应性: Rabbit

克隆性: Rabbit Monoclonal

克隆编号: R03-4E7

分子量: Calculated MW: 54 kDa; Observed MW: 54 kDa

亚型: IgG

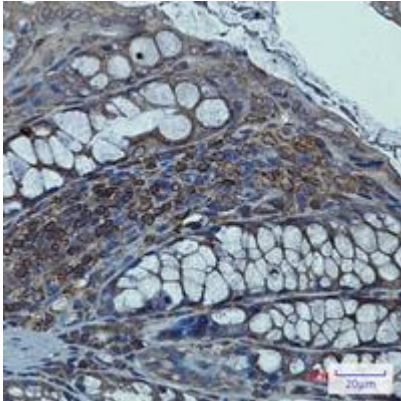
纯化: Affinity Purified

种属反应性: Human

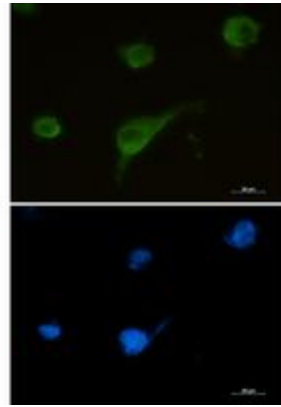
成分: PBS (without Mg²⁺ and Ca²⁺), pH 7.3 containing 50% glycerol, 0.5% BSA and 0.02% sodium azide

研究领域: Signal Transduction

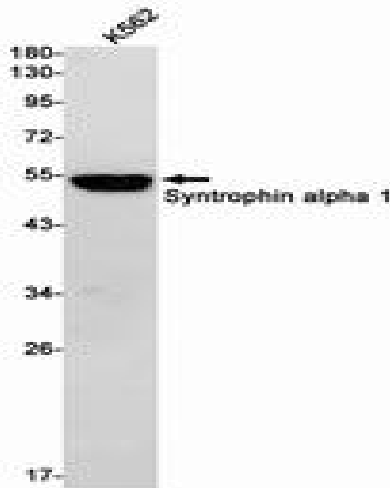
储存和运输: Store at -20°C. Avoid repeated freezing and thawing



Immunohistochemistry analysis of paraffin-embedded mouse colon using Syntrophin alpha 1 antibody. High-pressure and temperature Sodium Citrate pH 6.0 was used for antigen retrieval.



Immunocytochemistry analysis of U87-MG using Syntrophin alpha 1 antibody, and DAPI (blue).



Western blot analysis of Syntrophin alpha 1 in K562 lysates using Syntrophin alpha 1 antibody