

SYNM RABBIT PAB

货号: S221899

产品全名: SYNM 兔多抗

基因符号: DMN; SYN

UNIPROT ID: O15061 (Gene Accession - NP_056101)

背景: The protein encoded by this gene is an intermediate filament (IF) family member. IF proteins are cytoskeletal proteins that confer resistance to mechanical stress and are encoded by a dispersed multigene family. This protein has been found to form a linkage between desmin, which is a subunit of the IF network, and the extracellular matrix and provides an important structural support in muscle. Two alternatively spliced variants encoding different isoforms have been described for this gene.

抗原: Synthetic peptide of human SYNM

经过测试的应用: ELISA, IHC

推荐稀释比: IHC: 20-100; ELISA: 5000-10000

种属反应性: Rabbit

克隆性: Rabbit Polyclonal

亚型: Immunogen-specific rabbit IgG

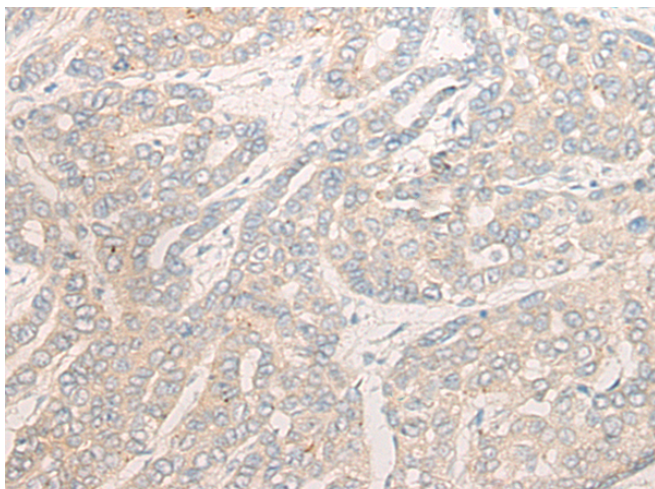
纯化: Antigen affinity purification

种属反应性: Human

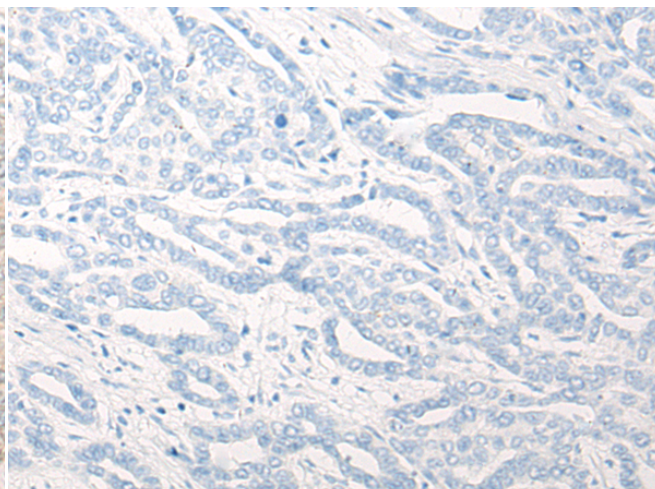
成分: PBS (without Mg²⁺ and Ca²⁺), pH 7.4, 150 mM NaCl, 0.05% Sodium Azide and 40% glycerol

研究领域: Signal Transduction

储存和运输: Store at -20°C. Avoid repeated freezing and thawing



Immunohistochemistry analysis of paraffin embedded Human liver cancer tissue using 221899 (SYNM Antibody) at a dilution of 1/20 (Cytoplasm).



In comparison with the IHC on the left, the same paraffin-embedded Human liver cancer tissue is first treated with the synthetic peptide and then with 221899 (Anti-SYNM Antibody) at dilution 1/20.