

SYNDECAN 1 RABBIT PAB

货号: N225120

产品全名: Syndecan 1 兔多抗

基因符号 SDC1; SDC; Syndecan-1; SYND1; CD138

UNIPROT ID: P18827

背景: Cell surface proteoglycan that bears both heparan sulfate and chondroitin sulfate and that links the cytoskeleton to the interstitial matrix.

抗原: The antiserum was produced against synthesized peptide derived from the Internal region of human SDC1. AA range:191-240

经过测试的应用: WB,IHC-P,ELISA

推荐稀释比: WB: 1/500-1/1000 IHC: 1/50-1/100 ELISA: 1/10000

种属反应性: Rabbit

克隆性: Rabbit Polyclonal

分子量: Calculated MW: 32 kDa; Observed MW: 32 kDa

亚型: IgG

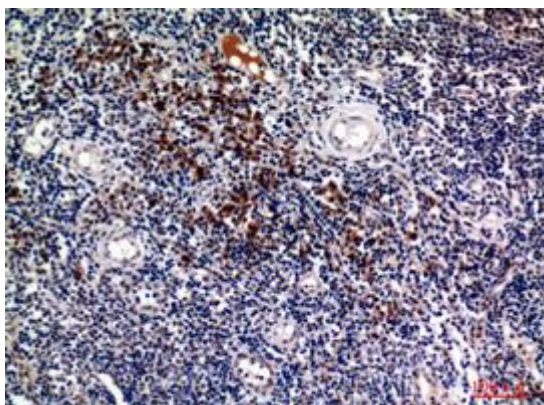
纯化: Affinity Purified

种属反应性: Human

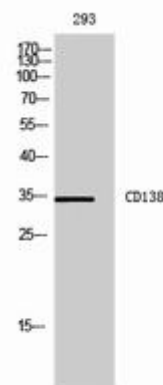
成分: PBS (without Mg²⁺ and Ca²⁺), pH 7.3 containing 50% glycerol, 0.5% BSA and 0.02% sodium azide

研究领域: Cell Biology

储存和运输: Store at -20°C. Avoid repeated freezing and thawing



Immunohistochemistry analysis of paraffin-embedded Human tonsils using Syndecan 1 antibody. High-pressure and temperature Sodium Citrate pH 6.0 was used for antigen retrieval.



Western blot analysis of Syndecan 1 in 293 lysates using Syndecan 1 antibody.



Product Description

Pioneering GTPase and Oncogene Product Development since 2010
