

## SYNAPTOPHYSIN RABBIT MAB

货号: N262958

产品全名: Synaptophysin 兔单克隆抗体

基因符号 SYP; Synaptophysin; Major synaptic vesicle protein p38

**UNIPROT ID:** P08247

背景: SYP Possibly involved in structural functions as organizing other membrane components or in targeting the vesicles to the plasma membrane. Involved in the regulation of short-term and long-term synaptic plasticity. Belongs to the synaptophysin/synaptobrevin family. Homohexamer or homotetramer. Note: This description may include information from UniProtKB.

抗原: A synthetic peptide of human Synaptophysin

经过测试的应用: WB,IHC-F,IHC-P,ICC/IF

推荐稀释比: WB: 1/500-1/1000 IHC: 1/50-1/100 IF: 1/50-1/200

种属反应性: Rabbit

克隆性: Rabbit Monoclonal

克隆编号: R06-2A2

分子量: Calculated MW: 34 kDa; Observed MW: 38 kDa

亚型: IgG

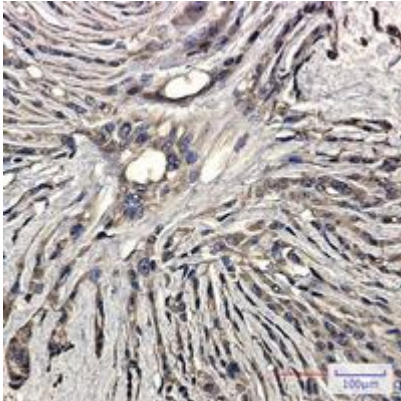
纯化: Affinity Purified

种属反应性: Human,Rat

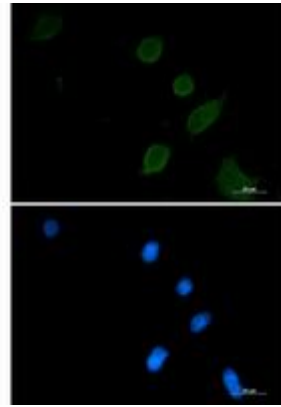
成分: PBS (without Mg<sup>2+</sup> and Ca<sup>2+</sup>), pH 7.3 containing 50% glycerol, 0.5% BSA and 0.02% sodium azide

研究领域: Neuroscience

储存和运输: Store at -20°C. Avoid repeated freezing and thawing



Immunohistochemistry analysis of paraffin-embedded Human Brain using Synaptophysin antibody. High-pressure and temperature Sodium Citrate pH 6.0 was used for antigen retrieval.



Immunocytochemistry analysis of Synaptophysin (green) in 3T3 using Synaptophysin antibody, and DAPI (blue).



Western blot analysis of Synaptophysin in rat Brain lysates using Synaptophysin antibody.