

SYNAPTOPHYSIN LIKE PROTEIN 1 RABBIT MAB

货号: N262963

产品全名: Synaptophysin Like Protein 1 兔单克隆抗体

基因符号 Pantophysin; SYPL1

UNIPROT ID: Q16563

背景: Predicted to be involved in chemical synaptic transmission.
Located in extracellular exosome.

抗原: Recombinant protein of human SYPL1

经过测试的应用: WB,IHC-P

推荐稀释比: WB: 1/500-1/1000 IHC: 1/50-1/100

种属反应性: Rabbit

克隆性: Rabbit Monoclonal

克隆编号: R02-9K7

分子量: Calculated MW: 29 kDa; Observed MW: 29 kDa

亚型: IgG

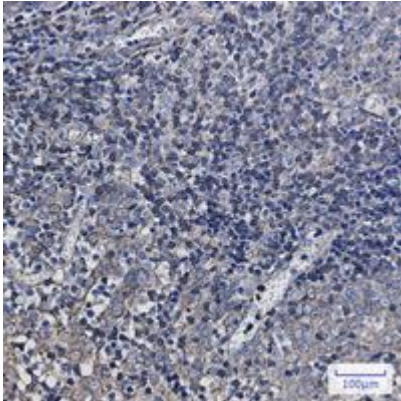
纯化: Affinity Purified

种属反应性: Human

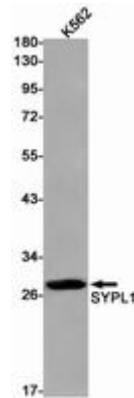
成分: PBS (without Mg²⁺ and Ca²⁺), pH 7.3 containing 50% glycerol,
0.5% BSA and 0.02% sodium azide

研究领域: Neuroscience

储存和运输: Store at -20°C. Avoid repeated freezing and thawing



Immunohistochemistry analysis of paraffin-embedded Human tonsil using SYPL1 antibody. High-pressure and temperature Sodium Citrate pH 6.0 was used for antigen retrieval.



Western blot analysis of SYPL1 in K562 lysates using Synaptophysin Like Protein 1 antibody.