

SYNAPTONEMAL COMPLEX PROTEIN 2 RABBIT PAB

货号: N225170

产品全名: Synaptonemal Complex Protein 2 兔多抗

基因符号 SYCP2; SCP2; Synaptonemal complex protein 2; SCP-2;
Synaptonemal complex lateral element protein; hsSCP2

UNIPROT ID: Q9BX26

背景: Major component of the axial/lateral elements of synaptonemal complexes (SCS) during meiotic prophase.

抗原: Synthesized peptide derived from the Internal region of human SCP-2.

经过测试的应用: WB,ELISA

推荐稀释比: WB: 1/500-1/1000 ELISA: 1/10000

种属反应性: Rabbit

克隆性: Rabbit Polyclonal

分子量: Calculated MW: 176 kDa; Observed MW: 176 kDa

亚型: IgG

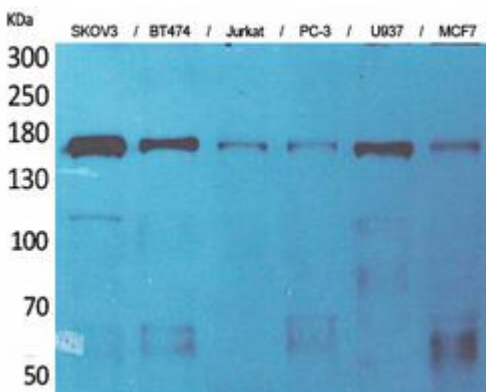
纯化: Affinity Purified

种属反应性: Human

成分: PBS (without Mg²⁺ and Ca²⁺), pH 7.3 containing 50% glycerol, 0.5% BSA and 0.02% sodium azide

研究领域: Cell Biology

储存和运输: Store at -20°C. Avoid repeated freezing and thawing



Western blot analysis of Synaptonemal Complex Protein 2 in SKOV-3, BT474, Jurkat, PC-3, U937, MCF-7 lysates using Synaptonemal Complex Protein 2 antibody.



Product Description

Pioneering GTPase and Oncogene Product Development since 2010
