

## SYNAPSIN 2 RABBIT MAB

货号: N263568

产品全名: Synapsin 2 兔单克隆抗体

基因符号 SYN 2; SYN II; SYN IIa; SYN IIb; SYN2; Synapsin2; SynapsinII; SYNII;  
SYNIIa; SYNIIb

**UNIPROT ID:** Q92777

背景: Synapsin II is a member of the synapsin gene family. Synapsins are neuronal phosphoproteins which associate with the cytoplasmic surface of synaptic vesicles.

抗原: A synthetic peptide of human SYN2

经过测试的应用: WB,IHC-P

推荐稀释比: WB: 1/500-1/1000 IHC: 1/50-1/100

种属反应性: Rabbit

克隆性: Rabbit Monoclonal

克隆编号: R07-015

分子量: Calculated MW: 63 kDa; Observed MW: 63 kDa

亚型: IgG

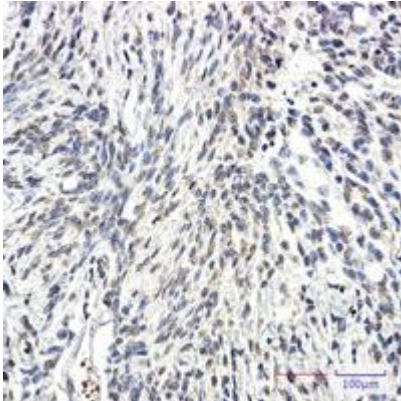
纯化: Affinity Purified

种属反应性: Human, Mouse and Rat

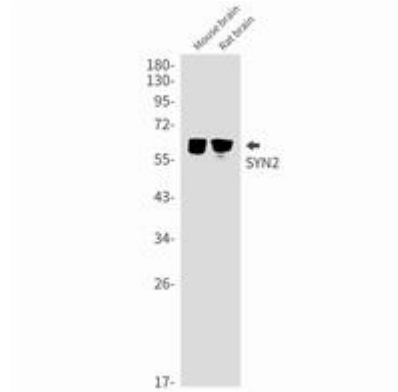
成分: PBS (without Mg<sup>2+</sup> and Ca<sup>2+</sup>), pH 7.3 containing 50% glycerol, 0.5% BSA and 0.02% sodium azide

研究领域: Signal Transduction

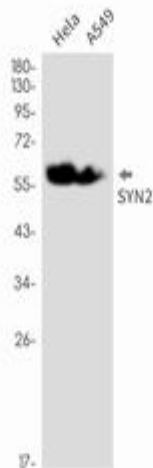
储存和运输: Store at -20°C. Avoid repeated freezing and thawing



Immunohistochemistry analysis of paraffin-embedded Human Brain using SYN2 antibody. High-pressure and temperature Sodium Citrate pH 6.0 was used for antigen retrieval.



Western blot analysis of SYN2 in mouse brain, rat brain lysates using Synapsin 2 antibody.



Western blot analysis of SYN2 in HeLa, A549 lysates using SYN2 antibody.