

## SYNAPSIN 1 RABBIT PAB

货号: N225406

产品全名: Synapsin 1 兔多抗

基因符号 SYN1; Synapsin-1; Brain protein 4.1; Synapsin I

**UNIPROT ID:** P17600

**背景:** This gene is a member of the synapsin gene family. Synapsins encode neuronal phosphoproteins which associate with the cytoplasmic surface of synaptic vesicles. Family members are characterized by common protein domains, and they are implicated in synaptogenesis and the modulation of neurotransmitter release, suggesting a potential role in several neuropsychiatric diseases.

**抗原:** The antiserum was produced against synthesized peptide derived from human Synapsin. AA range:3-52

**经过测试的应用:** WB,IHC-F,IHC-P,ICC/IF,ELISA

**推荐稀释比:** WB: 1/500-1/1000 IHC: 1/50-1/100 IF: 1/50-1/200 ELISA: 1/10000

**种属反应性:** Rabbit

**克隆性:** Rabbit Polyclonal

**分子量:** Calculated MW: 74 kDa; Observed MW: 74 kDa

**亚型:** IgG

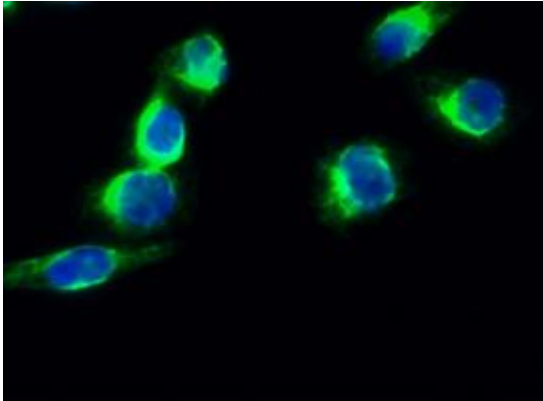
**纯化:** Affinity Purified

**种属反应性:** Human, Mouse and Rat

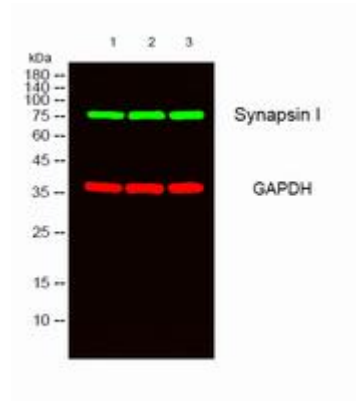
**成分:** PBS (without Mg<sup>2+</sup> and Ca<sup>2+</sup>), pH 7.3 containing 50% glycerol, 0.5% BSA and 0.02% sodium azide

**研究领域:** Neuroscience

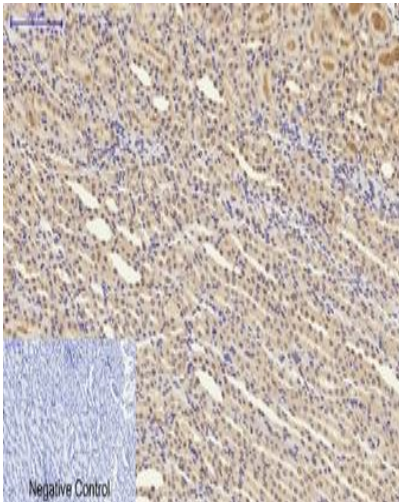
**储存和运输:** Store at -20°C. Avoid repeated freezing and thawing



Immunofluorescence analysis of Synapsin 1 in HeLa using Synapsin 1 antibody (green)



Western blot analysis of Synapsin 1 in HeLa, 293, 3T3 lysates using Synapsin 1 antibody.



Immunohistochemistry analysis of paraffin-embedded rat kidney tissue using Synapsin 1 antibody. High-pressure and temperature Sodium Citrate pH 6.0 was used for antigen retrieval.