

SV40 T ANTIGEN RABBIT MAB

货号: N263567

产品全名: SV40 T Antigen 兔单克隆抗体

基因符号 Large T antigen; LT; LT-AG

UNIPROT ID: P03070

背景: Isoform large T antigen is a key early protein essential for both driving viral replication and inducing cellular transformation. Plays a role in viral genome replication by driving entry of quiescent cells into the cell cycle and by autoregulating the synthesis of viral early mRNA. Displays highly oncogenic activities by corrupting the host cellular checkpoint mechanisms that guard cell division and the transcription, replication, and repair of DNA.

抗原: A synthetic peptide of SV40 T-antigen

经过测试的应用: WB, ICC/IF, IP

推荐稀释比: WB: 1/500-1/1000 IF: 1/50-1/200 IP: 1/20

种属反应性: Rabbit

克隆性: Rabbit Monoclonal

克隆编号: R08-7D4

分子量: Calculated MW: 82 kDa; Observed MW: 90 kDa

亚型: IgG

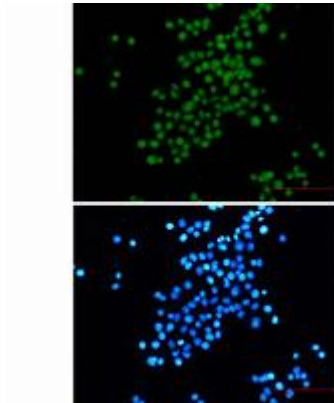
纯化: Affinity Purified

种属反应性: All

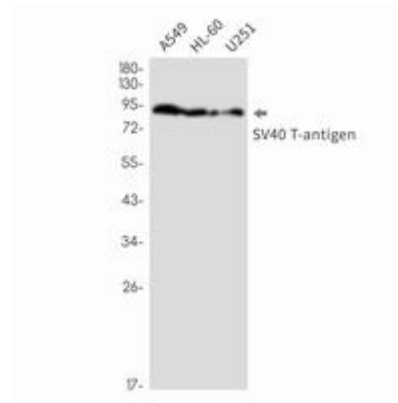
成分: PBS (without Mg²⁺ and Ca²⁺), pH 7.3 containing 50% glycerol, 0.5% BSA and 0.02% sodium azide

研究领域: Infectious Diseases

储存和运输: Store at -20°C. Avoid repeated freezing and thawing



Immunocytochemistry analysis of SV40 T antigen (green) in HeLa cells using SV40 T antigen antibody, and DAPI (blue)



Western blot analysis of SV40 T antigen in A549, HL-60, U251 cell lysates using SV40 T antigen antibody.