

## **SURFEIT LOCUS PROTEIN 4 RABBIT MAB**

货号: N263105

产品全名: Surfeit Locus Protein 4 兔单克隆抗体

基因符号 ERV29

**UNIPROT ID:** O15260

**背景:** This gene is located in the surfeit gene cluster, which is comprised of very tightly linked housekeeping genes that do not share sequence similarity. The encoded protein is a conserved integral membrane protein that interacts with endoplasmic reticulum-Golgi intermediate compartment proteins. Disruption of this gene results in reduced numbers of endoplasmic reticulum-Golgi intermediate compartment clusters and redistribution of coat protein I to the cytosol. Alternate splicing results in multiple transcript variants.

**抗原:** A synthetic peptide of human SURF4

**经过测试的应用:** WB, ICC/IF

**推荐稀释比:** WB: 1/500-1/1000 IF: 1/50-1/200

**种属反应性:** Rabbit

**克隆性:** Rabbit Monoclonal

**克隆编号:** R07-1F1

**分子量:** Calculated MW: 30 kDa; Observed MW: 30 kDa

**亚型:** IgG

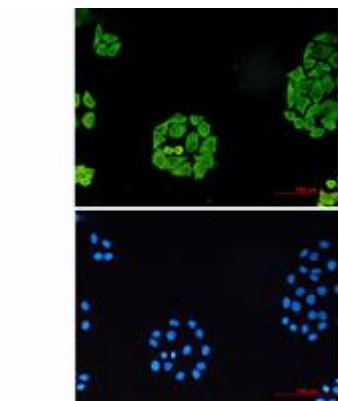
**纯化:** Affinity Purified

**种属反应性:** Human, Mouse and Rat

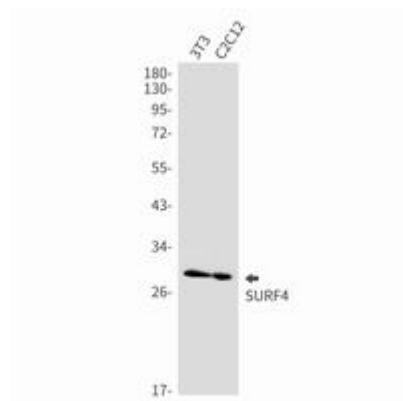
**成分:** PBS (without Mg<sup>2+</sup> and Ca<sup>2+</sup>), pH 7.3 containing 50% glycerol, 0.5% BSA and 0.02% sodium azide

**研究领域:** Tags & Cell Markers

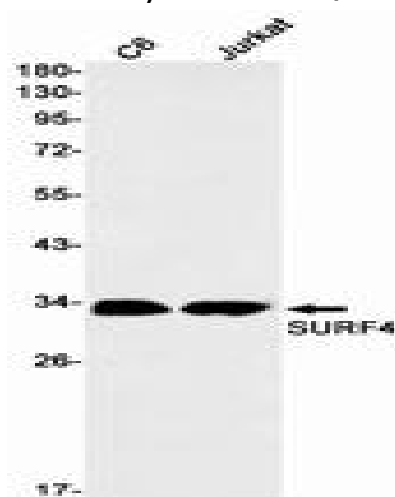
**储存和运输:** Store at -20°C. Avoid repeated freezing and thawing



Immunocytochemistry analysis of SURF4 (green) in Hela using SURF4 antibody, and DAPI (blue)



Western blot analysis of SURF4 in 3T3, C2C12 lysates using Surfeit Locus Protein 4 antibody.



Western blot analysis of SURF4 in C6, Jurkat lysates using SURF4 antibody.