

SUN1 RABBIT MAB

货号: N262953

产品全名: SUN1 兔单克隆抗体

基因符号 Sun1; UNC84A

UNIPROT ID: O94901

背景: Component of SUN-protein-containing multivariate complexes also called LINC complexes which link the nucleoskeleton and cytoskeleton by providing versatile outer nuclear membrane attachment sites for cytoskeletal filaments.

抗原: A synthetic peptide of human SUN1

经过测试的应用: WB,IHC-F,IHC-P,ICC/IF

推荐稀释比: WB: 1/500-1/1000 IHC: 1/50-1/100 IF: 1/50-1/200

种属反应性: Rabbit

克隆性: Rabbit Monoclonal

克隆编号: R05-9D5

分子量: Calculated MW: 87 kDa; Observed MW: 90 kDa

亚型: IgG

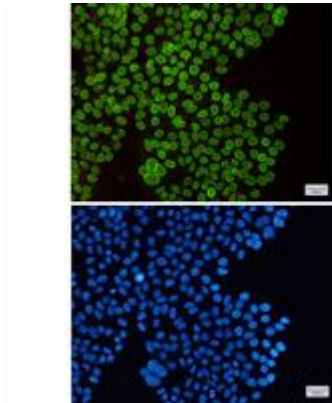
纯化: Affinity Purified

种属反应性: Human

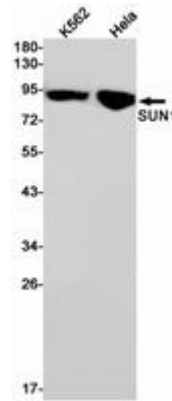
成分: PBS (without Mg²⁺ and Ca²⁺), pH 7.3 containing 50% glycerol, 0.5% BSA and 0.02% sodium azide

研究领域: Tags & Cell Markers

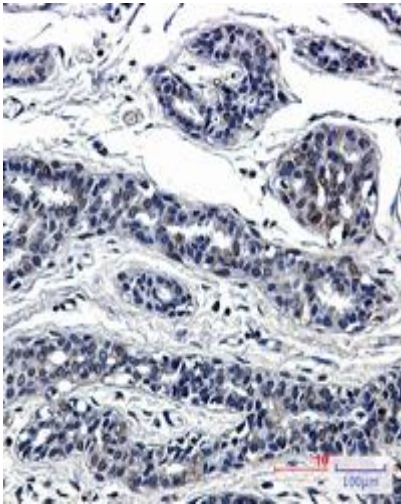
储存和运输: Store at -20°C. Avoid repeated freezing and thawing



Immunocytochemistry analysis of SUN1 (green) in HeLa using SUN1 antibody, and DAPI (blue)



Western blot analysis of SUN1 in K562, HeLa lysates using SUN1 antibody.



Immunohistochemistry analysis of paraffin-embedded Human breast cancer using SUN1 antibody. High-pressure and temperature Sodium Citrate pH 6.0 was used for antigen retrieval.