

SUMO2/SUMO3/SUMO4 RABBIT PAB

货号: S219793

产品全名: SUMO2/SUMO3/SUMO4 兔多抗

基因符号 HSMT3; SMT3B; SUMO3; Smt3A; SMT3H2; SMT3A; Smt3B; SMT3H1; SUMO-3; IDDM5; SMT3H4; SUMO-4; dJ281H8.4

UNIPROT ID: P61956/P55854/Q6EEV6 (Gene Accession - NP_008868/NP_008867/NP_001002255)

背景: This gene encodes a protein that is a member of the SUMO (small ubiquitin-like modifier) protein family. It functions in a manner similar to ubiquitin in that it is bound to target proteins as part of a post-translational modification system. However, unlike ubiquitin which targets proteins for degradation, this protein is involved in a variety of cellular processes, such as nuclear transport, transcriptional regulation, apoptosis, and protein stability. It is not active until the last two amino acids of the carboxy-terminus have been cleaved off. Numerous pseudogenes have been reported for this gene. Alternate transcriptional splice variants, encoding different isoforms, have been characterized.

抗原: Synthetic peptide of human SUMO2/SUMO3/SUMO4

经过测试的应用: ELISA, WB, IHC

推荐稀释比: IHC: 50-100;WB: 500-2000;ELISA: 5000-10000

种属反应性: Rabbit

克隆性: Rabbit Polyclonal

亚型: Immunogen-specific rabbit IgG

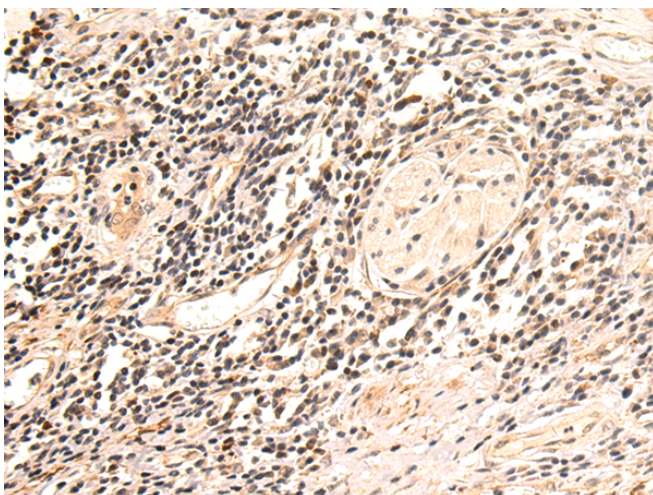
纯化: Antigen affinity purification

种属反应性: Human, Mouse, Rat

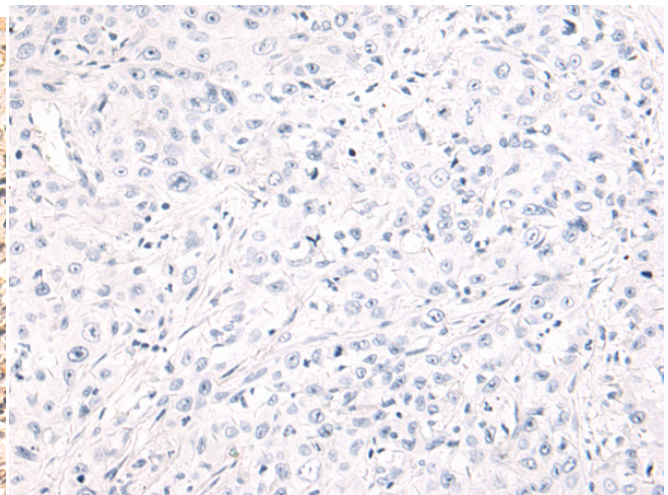
成分: PBS (without Mg²⁺ and Ca²⁺), pH 7.4, 150 mM NaCl, 0.05% Sodium Azide and 40% glycerol

研究领域: Cell Biology

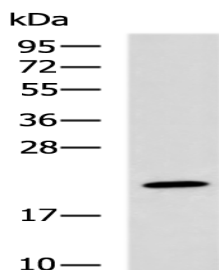
储存和运输: Store at -20°C. Avoid repeated freezing and thawing



Immunohistochemistry analysis of paraffin embedded Human esophagus cancer tissue using 219793(SUMO2/SUMO3/SUMO4 Antibody) at a dilution of 1/50(Nucleus).



In comparison with the IHC on the left, the same paraffin-embedded Human esophagus cancer tissue is first treated with the synthetic peptide and then with 219793(Anti-SUMO2/SUMO3/SUMO4 Antibody) at dilution 1/50.



kDa
95 —
72 —
55 —
36 —
28 —
17 —
10 —
Gel: 8%SDS-PAGE, Lysate: 40 µg;
Lane: Mouse kidney tissue lysate;
Primary antibody: 219793(SUMO2/SUMO3/SUMO4 Antibody) at dilution 1/1000;
Secondary antibody: HRP-conjugated Goat anti rabbit IgG at 1/5000 dilution;
Exposure time: 1 minute



Product Description

Pioneering GTPase and Oncogene Product Development since 2010
