

SULT2A1 RABBIT PAB

货号: S217863

产品全名: SULT2A1 兔多抗

基因符号: HST; ST2; STD; hSTa; DHEAS; ST2A1; ST2A3; DHEA-ST

UNIPROT ID: Q06520 (Gene Accession - BC020755)

背景: This gene encodes a member of the sulfotransferase family. Sulfotransferases aid in the metabolism of drugs and endogenous compounds by converting these substances into more hydrophilic water-soluble sulfate conjugates that can be easily excreted. This protein catalyzes the sulfation of steroids and bile acids in the liver and adrenal glands, and may have a role in the inherited adrenal androgen excess in women with polycystic ovary syndrome.

抗原: Fusion protein of human SULT2A1

经过测试的应用: ELISA, WB, IHC

推荐稀释比: IHC: 25-100;WB: 500-2000;ELISA: 2000-5000

种属反应性: Rabbit

克隆性: Rabbit Polyclonal

亚型: Immunogen-specific rabbit IgG

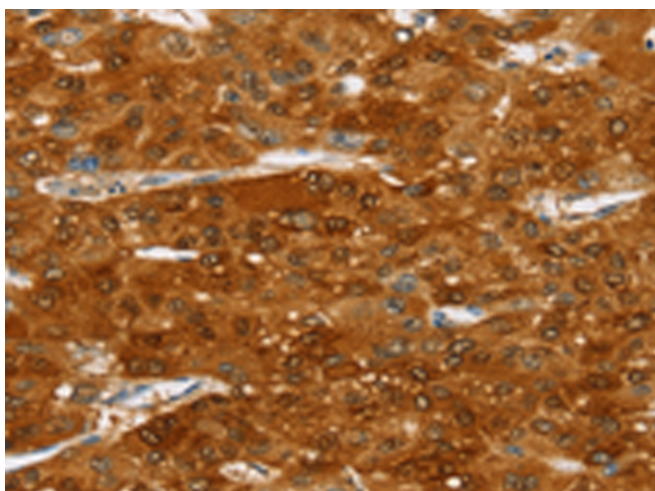
纯化: Antigen affinity purification

种属反应性: Human

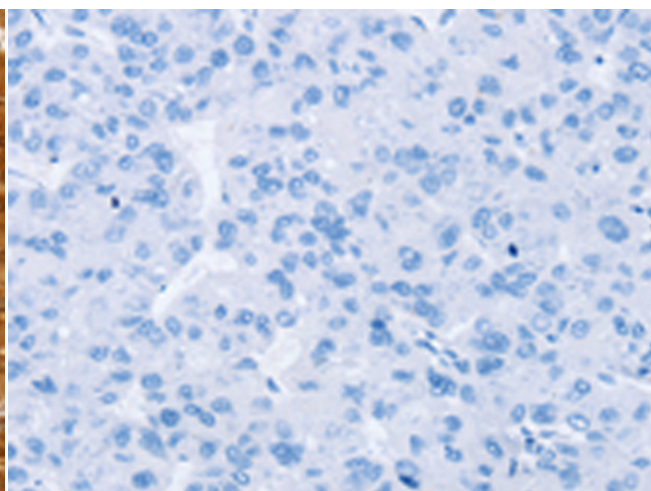
成分: PBS (without Mg²⁺ and Ca²⁺), pH 7.4, 150 mM NaCl, 0.05% Sodium Azide and 40% glycerol

研究领域: Metabolism, Cancer

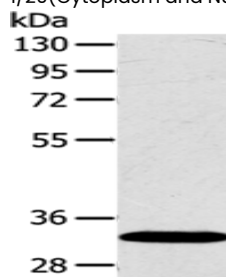
储存和运输: Store at -20°C. Avoid repeated freezing and thawing



Immunohistochemistry analysis of paraffin embedded Human liver cancer tissue using 217863(SULT2A1 Antibody) at a dilution of 1/20(Cytoplasm and Nucleus).



In comparison with the IHC on the left, the same paraffin-embedded Human liver cancer tissue is first treated with the fusion protein and then with 217863(Anti-SULT2A1 Antibody) at dilution 1/20.



Gel: 8%SDS-PAGE, Lysate: 40 µg;

Lane: Human fetal liver tissue;

Primary antibody: 217863(SULT2A1 Antibody) at dilution 1/650;

Secondary antibody: Goat anti rabbit IgG at 1/8000 dilution;

Exposure time: 1 second