

SUCLG2 RABBIT PAB

货号: S219596

产品全名: SUCLG2 兔多抗

基因符号: G-SCS; GBETA; GTPSCS

UNIPROT ID: Q96I99 (Gene Accession - BC047024)

背景: This gene encodes a GTP-specific beta subunit of succinyl-CoA synthetase. Succinyl-CoA synthetase catalyzes the reversible reaction involving the formation of succinyl-CoA and succinate. Alternate splicing results in multiple transcript variants. Pseudogenes of this gene are found on chromosomes 5 and 12.

抗原: Fusion protein of human SUCLG2

经过测试的应用: ELISA, IHC

推荐稀释比: IHC: 50-200; ELISA: 5000-10000

种属反应性: Rabbit

克隆性: Rabbit Polyclonal

亚型: Immunogen-specific rabbit IgG

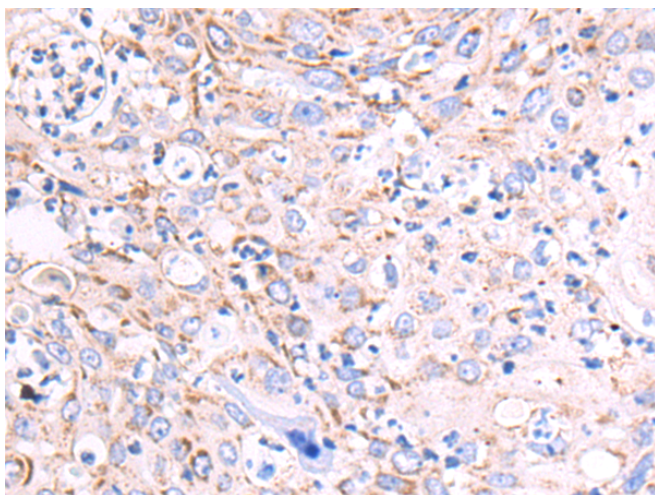
纯化: Antigen affinity purification

种属反应性: Human, Mouse

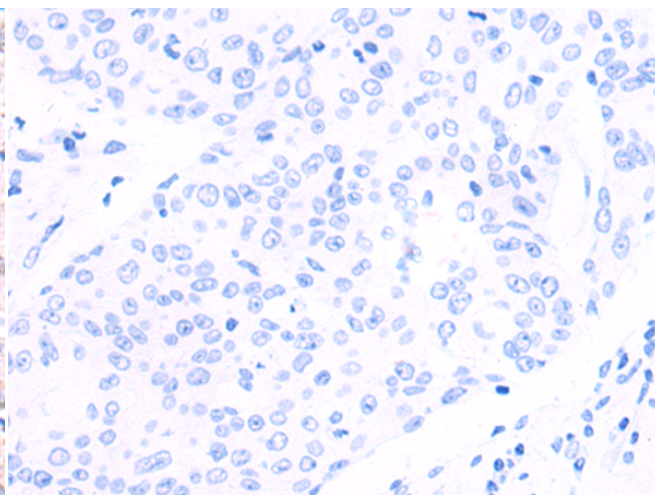
成分: PBS (without Mg²⁺ and Ca²⁺), pH 7.4, 150 mM NaCl, 0.05% Sodium Azide and 40% glycerol

研究领域: Signal Transduction, Metabolism

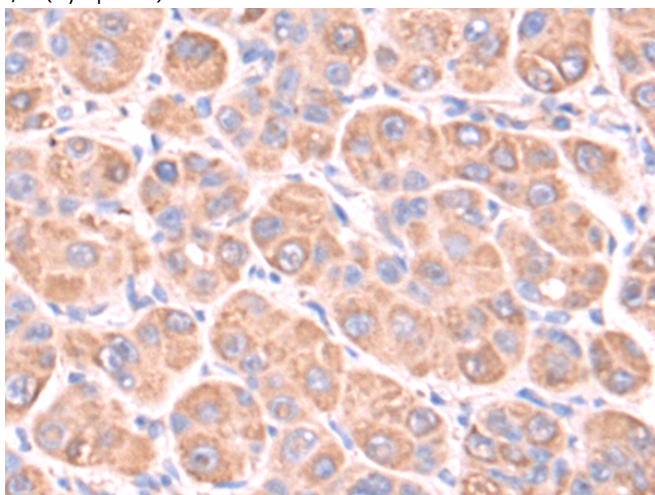
储存和运输: Store at -20°C. Avoid repeated freezing and thawing



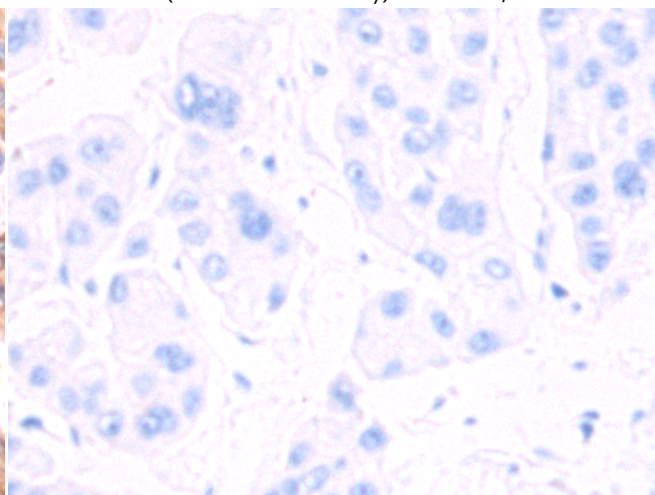
Immunohistochemistry analysis of paraffin embedded Human liver cancer tissue using 219596(SUCLG2 Antibody) at a dilution of 1/80(Cytoplasm).



In comparison with the IHC on the left, the same paraffin-embedded Human liver cancer tissue is first treated with the fusion protein and then with 219596(Anti-SUCLG2 Antibody) at dilution 1/80.



The image on the left is immunohistochemistry of paraffin-embedded Human bladder cancer tissue using 219596(Anti-SUCLG2 Antibody) at a dilution of 1/80.



In comparison with the IHC on the left, the same paraffin-embedded Human bladder cancer tissue is first treated with fusion protein and then with D227877(Anti-SUCLG2 Antibody) at dilution 1/80.



Product Description

Pioneering GTPase and Oncogene Product Development since 2010
