

SUCLA2 RABBIT PAB

货号: S219475

产品全名: SUCLA2 兔多抗

基因符号: A-SCS; A-BETA; MTDP5; LINC00444; SCS-betaA

UNIPROT ID: Q9P2R7 (Gene Accession - BC027587)

背景: Succinyl-CoA synthetase (SCS) is a mitochondrial matrix enzyme that acts as a heterodimer, being composed of an invariant alpha subunit and a substrate-specific beta subunit. The protein encoded by this gene is an ATP-specific SCS beta subunit that dimerizes with the SCS alpha subunit to form SCS-A, an essential component of the tricarboxylic acid cycle. SCS-A hydrolyzes ATP to convert succinate to succinyl-CoA. Defects in this gene are a cause of myopathic mitochondrial DNA depletion syndrome. A pseudogene of this gene has been found on chromosome 6.

抗原: Fusion protein of human SUCLA2

经过测试的应用: ELISA, WB, IHC

推荐稀释比: IHC: 50-100;WB: 500-2000;ELISA: 5000-10000

种属反应性: Rabbit

克隆性: Rabbit Polyclonal

亚型: Immunogen-specific rabbit IgG

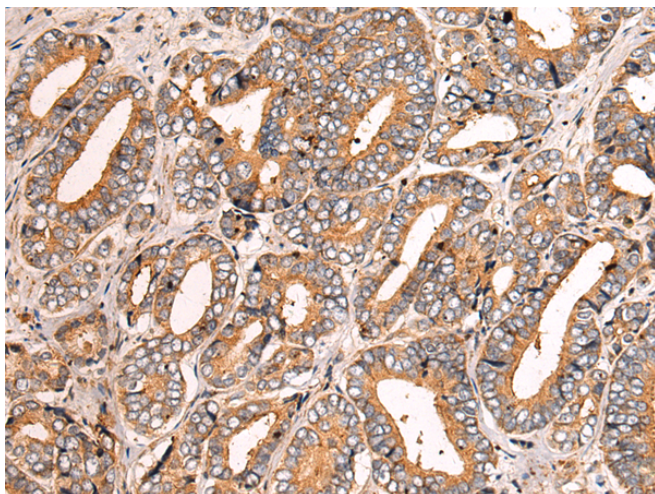
纯化: Antigen affinity purification

种属反应性: Human, Mouse

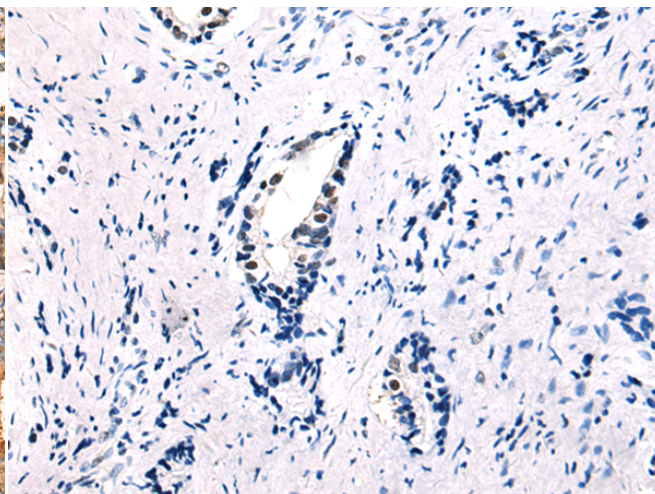
成分: PBS (without Mg²⁺ and Ca²⁺), pH 7.4, 150 mM NaCl, 0.05% Sodium Azide and 40% glycerol

研究领域: Signal Transduction, Neuroscience, Cardiovascular, Metabolism

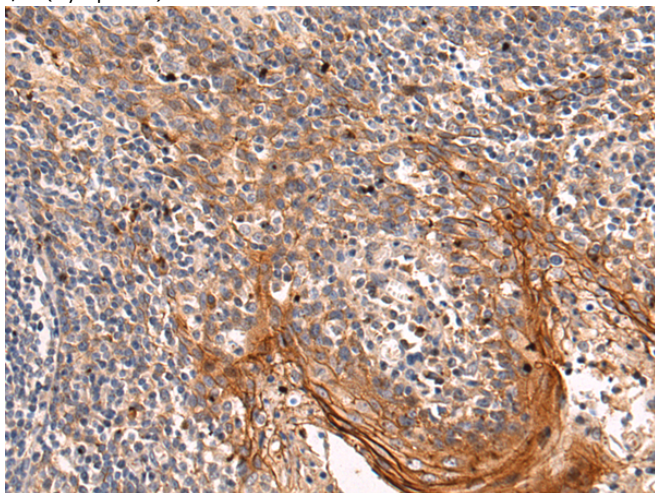
储存和运输: Store at -20°C. Avoid repeated freezing and thawing



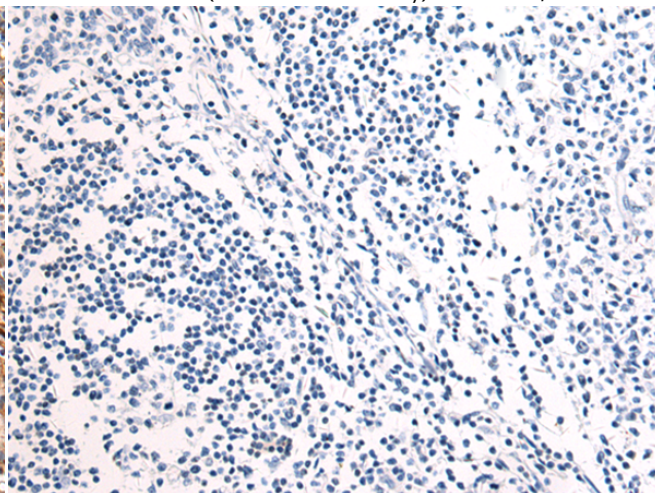
Immunohistochemistry analysis of paraffin embedded Human prostate cancer tissue using 219475(SUCLA2 Antibody) at a dilution of 1/65(Cytoplasm).



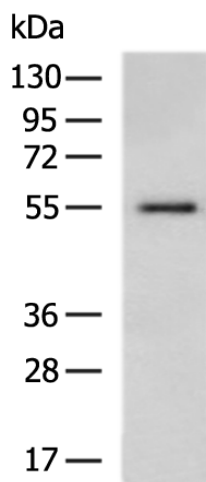
In comparison with the IHC on the left, the same paraffin-embedded Human prostate cancer tissue is first treated with the fusion protein and then with 219475(Anti-SUCLA2 Antibody) at dilution 1/65.



The image on the left is immunohistochemistry of paraffin-embedded Human tonsil tissue using 219475(Anti-SUCLA2 Antibody) at a dilution of 1/65.



In comparison with the IHC on the left, the same paraffin-embedded Human tonsil tissue is first treated with fusion protein and then with D227293(Anti-SUCLA2 Antibody) at dilution 1/65.



Gel: 8%SDS-PAGE, Lysate: 40 µg;
Lane: Human placenta tissue lysate;
Primary antibody: 219475(SUCLA2 Antibody) at dilution 1/600;
Secondary antibody: HRP-conjugated Goat anti rabbit IgG at 1/5000 dilution;
Exposure time: 2 minutes



Product Description

Pioneering GTPase and Oncogene Product Development since 2010
