

STX11 RABBIT PAB

货号: S217875

产品全名: STX11 兔多抗

基因符号: FHL4; HLH4; HPLH4

UNIPROT ID: O75558 (Gene Accession - BC033519)

背景: This gene encodes a member of the syntaxin family. Syntaxins have been implicated in the targeting and fusion of intracellular transport vesicles. This family member may regulate protein transport among late endosomes and the trans-Golgi network. Mutations in this gene have been associated with familial hemophagocytic lymphohistiocytosis.

抗原: Fusion protein of human STX11

经过测试的应用: ELISA, WB, IHC

推荐稀释比: IHC: 25-100;WB: 500-2000;ELISA: 2000-5000

种属反应性: Rabbit

克隆性: Rabbit Polyclonal

亚型: Immunogen-specific rabbit IgG

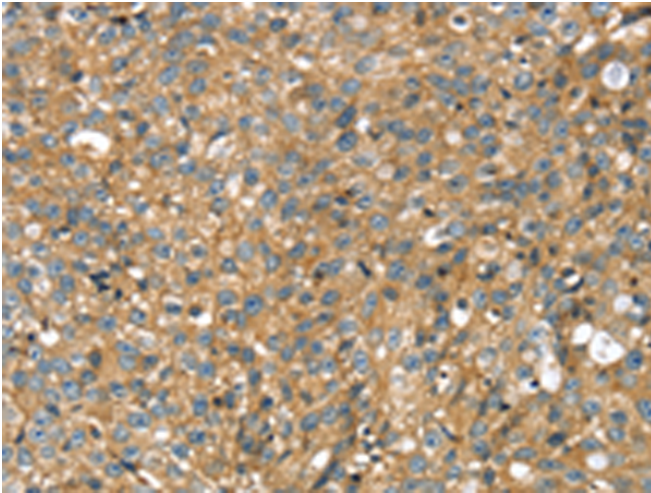
纯化: Antigen affinity purification

种属反应性: Human, Mouse

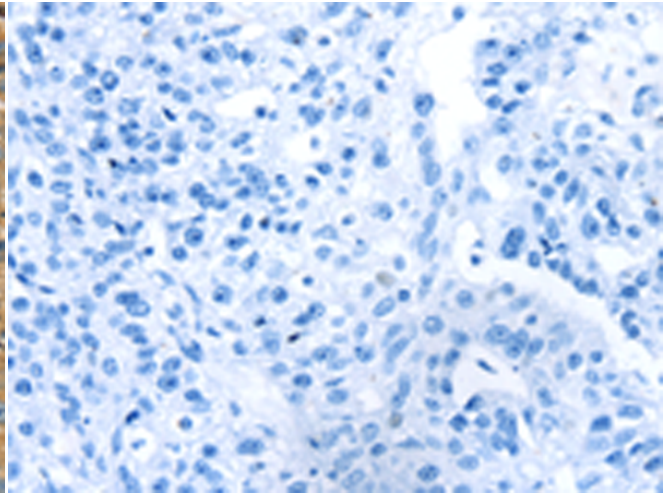
成分: PBS (without Mg²⁺ and Ca²⁺), pH 7.4, 150 mM NaCl, 0.05% Sodium Azide and 40% glycerol

研究领域: Signal Transduction

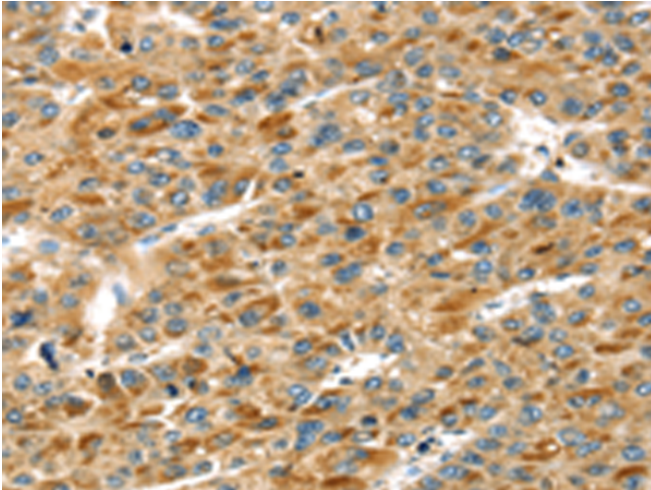
储存和运输: Store at -20°C. Avoid repeated freezing and thawing



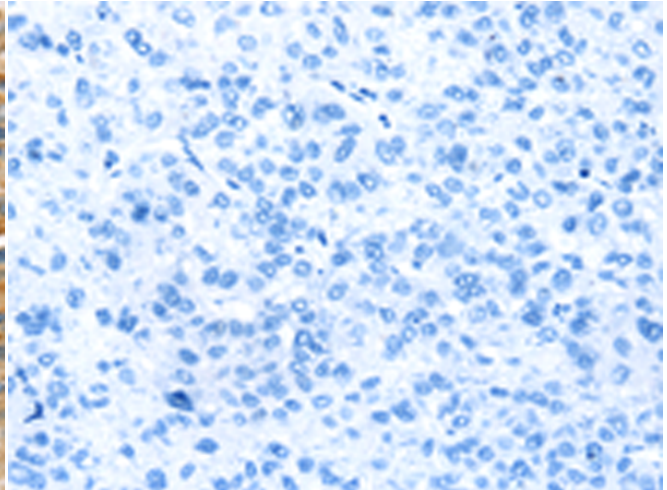
Immunohistochemistry analysis of paraffin embedded Human breast cancer tissue using 217875(STX11 Antibody) at a dilution of 1/30(Cytoplasm).



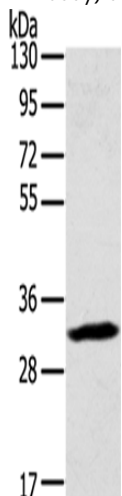
In comparison with the IHC on the left, the same paraffin-embedded Human breast cancer tissue is first treated with the fusion protein and then with 217875(Anti-STX11 Antibody) at dilution 1/30.



The image on the left is immunohistochemistry of paraffin-embedded Human liver cancer tissue using 217875(Anti-STX11 Antibody) at a dilution of 1/30.



In comparison with the IHC on the left, the same paraffin-embedded Human liver cancer tissue is first treated with fusion protein and then with D223276(Anti-STX11 Antibody) at dilution 1/30.



Gel: 8%SDS-PAGE, Lysate: 40 µg;
Lane: Mouse Lung tissue;
Primary antibody: 217875(STX11 Antibody) at dilution 1/400;
Secondary antibody: Goat anti rabbit IgG at 1/8000 dilution;
Exposure time: 20 seconds



Product Description

Pioneering GTPase and Oncogene Product Development since 2010
